

# Chinese Festival

of the Arts and Humanities 2010



Zhiyuan Cong, *The Space in Between Humanity and Deity* (detail), 1986;  
Chinese pigment on rice paper, 61 x 246.4 cm (24 x 97 inches)



**MONTCLAIR STATE**  
UNIVERSITY

MONTCLAIR STATE UNIVERSITY  
presents

## Contemplating China's Past and Future: A Festival of Chinese Arts and Humanities

中國節

Chinese  
Festival  
of the  
Arts and  
Humanities  
2010



*Celebrating Chinese culture  
with exhibits, concerts,  
programs, and events.*

**February 24 – April 25, 2010**

The Festival, which takes place on the campus of Montclair State University and in the town of Montclair from February 24 to April 25, 2010, pays homage to China's remarkable cultural legacy and its strong impact. Through a series of over twenty concerts, lectures, exhibitions, symposiums, discussions, and workshops, artists, musicians, filmmakers, writers, and scholars from China and the United States will demonstrate the various aspects of China's culture. While pondering China's ability to maintain its distinctiveness and individualism, they will examine China as a continuum from an ancient to a modern culture with recurring and contemporized motifs, intersecting with, and influencing the world.

# Schedule of Events

## FEBRUARY

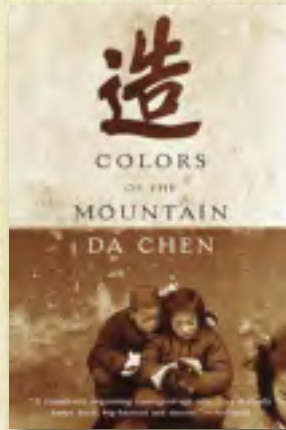
**Wednesday, February 24 10:00 a.m.**

**Cohen Lounge, Dickson Hall**

**Panel:** *Contemporary Chinese History Through the Lens of Literature*

Jeffrey Kinkley (Professor of History, St. John's University) and Da Chen (author, *Colors of the Mountain, Sounds of the River*) will discuss the intellectual, social, and literary history of twentieth century China as it can be seen through the lens of its literature. Dr. Kinkley's research focuses on crossovers of literature and history, concentration camp literature, Chinese crime fiction, and memoirs. Da Chen's memoirs, compared to *Angela's Ashes*, went on to become a *New York Times* bestseller.

**Moderator:** Kenneth Olenik, Department of History, Montclair State University



**Wednesday, February 24 6:00 p.m.**

**University Hall, Room 4011**

**Workshop:** *The Stories Behind Chinese Dumplings*

Visiting scholars Chang Yu (Beijing Jiaotong University) and Fenghua Xu (Donghua University) will discuss the history of Chinese dumplings, with a hands-on demonstration and tasting.

**Limited space; by reservation only.**

Call 973-655-4499 to register.

**Workshop coordinators:** Charles Feldman, Department of Health and Nutrition Sciences; and Aihua Li, Department of Mathematical Sciences, Montclair State University



## MARCH

**Tuesday, March 2 7:00 p.m.**

**University Hall, Room 1040**

**Film Series:** *Dark Matter* (2007)

Directed by Chen Shi-Zheng

This film is based on a true story of a Chinese physics student. The film stars Liu Xing as a humble but brilliant Chinese student at an American university. It describes his bumpy transition into American life with the help of a wealthy university patron (Meryl Streep). Xing joins a select cosmology group under the direction of his hero (Aidan Quinn), but encounters unexpected obstacles when he begins to make scientific breakthroughs of his own. The screening will feature Billy Shebar, screenwriter, as guest speaker.

**Moderator:** Roberta Friedman, Department of Art and Design, Montclair State University



**Thursday, March 4 – Friday, April 9  
Segal Gallery**

**Exhibition:** *The Enduring Art of China*

Co-curated by Zhiyuan Cong (Professor of Art, William Paterson University) and Teresa Rodriguez (Director, Montclair State University George Segal Gallery), the exhibit will feature 50 scrolls by eight leading artists from China, showcasing current renditions in traditional materials – ink, brush, and rice paper. The

The Gallery is open Tuesdays, Wednesdays, Fridays, and Saturdays from 10:00 a.m.–5:00 p.m. and Thursdays 12:30 p.m.–7:30 p.m. Segal Gallery is closed Sundays, Mondays, and all major holidays.

**Thursday, March 4 2:00 p.m.  
Segal Gallery**

**Symposium:** *The Enduring Art of China*

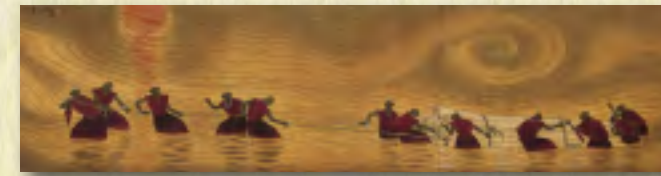
A panel of featured artists will discuss their work, with illustrations and a question and answer period. Speakers include Chen Lusheng (Research Director, National Art Museum of China); Cheng Dali (Editor-in-Chief of General Fine Arts Publishing House of China); Fan Yang (Dean, College of Fine Arts, Nanjing Normal University); Li Yang (Professor, Chinese Central Fine Arts Institute, Beijing); and Wang Huangsheng (Director, Guangdong Art Museum).

**Moderator:** Zhiyuan Cong (Professor of Art, William Paterson University) Call 973-655-6941 or 973-655-3382 to register.



**Thursday, March 4 5:30 p.m.  
Segal Gallery**

**Opening Reception:** *The Enduring Art of China*



**Tuesday, March 9 4:00 p.m.**

**Sokol Seminar Room**

**Lecture:** *Contributions of Ancient Chinese Mathematicians*

Chuang Peng (Professor of Mathematics, Morehouse College), will give an overview of Chinese contributions to mathematics over 1,500 years, with wide applications to many fields, including land surveying, astronomy, trade, and taxation. Co-sponsored by the Department of Mathematical Sciences, Sokol Seminar Series.

**Moderator:** Aihua Li, Department of Mathematical Sciences, Montclair State University

**Tuesday, March 9 – Saturday, March 20 5:00 p.m.**

**Finley Hall Gallery**

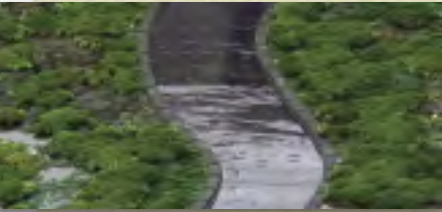
**Exhibition Opening and Reception: *Global Images – Focus on China***

This exhibition of photographs, by faculty and staff from Montclair State University and its international partner universities, will focus on images of China.

**Tuesday, March 9 7:00 p.m.**

**University Hall Room 1040**

**Film Series: *Inside/Outside: An Evening of Short Videos from China***



This series of short films by young Chinese filmmakers and video artists will be introduced by curator and artist Ellen Zweig. Also included in the program are a number of videos made by American and European visitors to China.

**Moderators:** Roberta Friedman, Department of Art and Design, and Beverly Peterson, Department of Broadcasting, Montclair State University

**Thursday, March 11 7:30 p.m.**

**Leshowitz Recital Hall**

**Concert: *Music from China Ensemble***

Founded in 1984, the New York-based ensemble *Music from China*, comprised of 4-6 musicians, will perform works that extend Chinese music and instruments beyond traditional boundaries. Led by Wang Guowei, Artistic Director; Zhou Long, Music Director; and Susan Cheng, Executive Director, they will present innovative works mixing Chinese and Western instruments that form part of their exciting repertoire.



**Tuesday, March 23 4:00 p.m.**

**Sokol Seminar Room**

**Workshop: *Calculating with a Chinese Abacus***

This workshop, featuring Hanping Yu (accountant for various Chinese companies) and Aihua Li (Department of Mathematical Sciences, Montclair State University), will describe the history and basic rules of the Chinese abacus. Participants will learn to perform simple addition, subtraction, and multiplication calculations.



The workshop will culminate with a competition between Ms. Yu on abacus and participants utilizing calculators or computers. Co-sponsored by the Department of Mathematical Sciences, and the Montclair State University Student Math Club.

**Moderator:** Aihua Li, Department of Mathematical Sciences, Montclair State University

**Wednesday, March 24 2:30 p.m.**

**Cali School of Music, Chapin Hall**

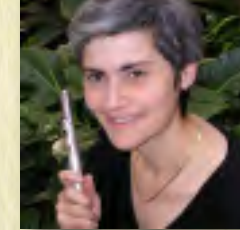
**Seminar: *Rhapsody in Red: How Western Classical Music Became Chinese***

Author Jindong Cai (Director of Orchestral Studies, Stanford University and a guest conductor of several major orchestras in China), and Sheila Melvin (journalist and author of numerous articles on Chinese arts) will discuss the history of classical music in China – how Western classical music entered China, and how it became Chinese. They will be joined by Sue-Ellen Hershman-Tcherepnin, a Boston-based flutist and editor of *Alexander Tcherepnin: The Saga of a Russian Emigré Composer*, by Ludmila Korabelnikova. Hershman-Tcherepnin is the daughter-in-law of the Russian composer who lived in Shanghai during the 1930s, and is renowned for educating young Chinese musicians and composers.

**Moderator:** David Witten, John J. Cali School of Music, Montclair State University



**Thursday, March 25 7:30 p.m.**



**Leshowitz Recital Hall**

**Concert: *Chinese and Chinese-Influenced Music***

Cali School of Music students and faculty, along with guest flutist Sue-Ellen Hershman-Tcherepnin, will perform Chinese-influenced chamber music by both Chinese and Western composers.

## APRIL

**Tuesday, April 6 10:00 a.m.**

**Cohen Lounge, Dickson Hall**

**Panel: *Politics and Society in China***

This panel will examine several key issues in contemporary Chinese politics and society. Andrew Nathan (Professor of Political Science, Columbia University) will discuss current issues in human rights; Guobin Yang (Professor of Asian and Middle East Cultures, Barnard College, Columbia University) will consider new media and China; Michael Santoro (Professor of Business Ethics, Rutgers University) will discuss ethics and foreign investment in China; and Barry Friedman (Vice President Corporate Affairs, Wal-Mart China and former Minister of Commerce, United States Embassy, Beijing) will present keys to conducting business in China.

**Moderator:** Elizabeth Wishnick, Department of Political Science, Montclair State University



**Tuesday, April 6** 7:00 p.m.  
**University Hall, Room 1040**

**Film Series: Autumn Gem (2009)**

This film explores the extraordinary life of the Chinese revolutionary heroine and women's rights activist Qiu Jin (1875–1907). At a time when women's lives were often marked by foot binding, arranged marriages, and denial of education, she envisioned a future where women would free themselves from the confines of tradition and emerge as strong and active citizens of a new and modern nation. Produced in HD video, this biographical documentary offers a fresh perspective on women in China and a remarkable chapter in the history of modern China. The screening will feature filmmakers Rae Chang and Adam Tow as guest speakers.

**Moderator:** Roberta Friedman, Department of Art and Design, Montclair State University



**Thursday, April 8** 4:00 p.m.  
**Montclair High School Annex Atrium**

**Panel: Education in China**



A panel consisting of visiting scholars Fenghua Xu (Donghua University), Chang Yu (Beijing Jiaotong University), Aihua Li (Professor of Mathematical Sciences, Montclair State University), American schoolteachers who participated in a mathematics project in China, and students who attended school in China will discuss personal impressions and comparisons with education in China.

Co-sponsored by Montclair Board of Education.

**Moderators:** Mika Munakata, Department of Mathematical Sciences; and Nancy Tumposky, Department of Curriculum and Teaching, Montclair State University

**Thursday, April 8** 5:00 p.m.  
**Segal Gallery**

**Symposium: Contemplating China's Past and Future**

Lily Wei, curator, essayist, critic, and contributor (*Art in America*, *ARTnews*, and *Art Asia Pacific*), Richard Vine (Senior Editor, *Art in America*), and artist Wei Dong will discuss the continuum of style and cultural themes in Chinese art through contemporary post-Cultural Revolution "avant-garde" art, from a global perspective. Panelists will contrast the new wave experimental art being practiced with the more conservative "enduring" theme, and compare the difference between a Chinese perspective and that of Chinese-American artists or ex-patriots living in the United States.

**Moderator:** Catherine Bebout, Department of Art and Design, Montclair State University



**Tuesday, April 13** 3:00 p.m.  
**Cohen Lounge, Dickson Hall**

**Panel: History of the Chinese Language**

This panel will examine some contemporary phenomena of Chinese language use, Chinese writing system, and Chinese language teaching. Lening Liu (Professor of Chinese, Columbia University) will describe and explain certain language scenes of today's China; Ken Olenik (Department of History, Montclair State University) will discuss the Chinese writing system in historical context with a focus on the origins of the writing system during the Shang and earlier periods; and Yahui Olenik (Department of Linguistics, Montclair State University) will address some common challenges faced by American undergraduate students studying Mandarin.

**Moderator:** Longxing Wei, Department of Linguistics, Montclair State University



**Tuesday, April 13** 7:00 p.m.  
**University Hall Room 1040**

**Film Series: RMB City—An Evening in Second Life with Cao Fei, aka China Tracy, and short films**



The artist Cao Fei lives in Second Life as China Tracy; this evening she will take us on a tour of RMB City and discuss her experience in this virtual world. Introduced by artist Ellen Zweig.

**Moderator:** Roberta Friedman, Department of Art and Design, Montclair State University

**Wednesday, April 14** 6:00 p.m.  
**University Hall Room 4011**

**Lecture/Tasting: Chinese Cuisine and History**

Jennifer 8. Lee, (*New York Times* columnist and author of *The Fortune Cookie Chronicles*) will discuss the history of Chinese cuisine and its reinterpretation in America. Montclair State University Food Management students will prepare Chinese dishes with Ms. Lee at the Montclair State University state-of-the-art kitchen.

**Limited space; by reservation only.** Call 973-655-4499 to register.

**Moderator:** Charles Feldman, Department of Health and Nutrition Sciences, Montclair State University



**Thursday, April 22**  
**Sokol Seminar Room**

**10:00 a.m.**

**Panel:** *Environmental Sustainability in China and the United States*



In response to emerging urban environmental complexities, a panel comprised of Yu Lizhong (President, East China Normal University and Professor of Environmental Science); Dekui Yuan (Professor of Mechanical Engineering, Tianjin University); and Montclair State University environmental scientists will discuss China's growing environmental issues related to urban

economic development and international collaborative responses.

**Moderator:** Huan Feng, Department of Earth and Environmental Studies, Montclair State University

**Thursday, April 22**  
**Student Center Quad**

**12:00 p.m.**

**Performance:** *Traditional Arts at the World's Fair*  
The Montclair State University's annual student sponsored World's Fair will include hands-on activities in calligraphy, sumi-e, abacus, crafts, food, mahjong, and performances by local Chinese choirs, dance groups, and traditional musicians.



**Thursday, April 22**  
**Kasser Theater**

**7:30 p.m.**

**Concert:** *Montclair State University Symphony Orchestra with guest soloist Weigang Li of Shanghai Quartet*

Conducted by Paul Hostetter (Director of Orchestral Studies, Cali School of Music, Montclair State University), the concert will feature the *Butterfly Lovers' Violin Concerto*, written in 1959 by Chen Gang and He Zhanhao while at the Shanghai Conservatory of Music. The concerto became popular after the Cultural Revolution, when it became an embodiment of China in transition, heard in both concert halls and figure skating arenas. It is now often performed with Chinese instruments as the soloist and accompanied by an orchestra of Chinese instruments.

**Sunday, April 25**

**3:00 p.m.**

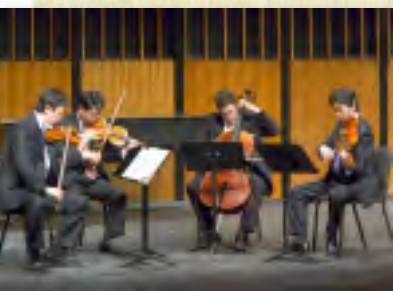
**Kasser Theater**

**Concert:** *Shanghai Quartet, with special guest Christian McBride, double bass*

Renowned jazz bassist Christian McBride joins the Shanghai Quartet in an eclectic program that will include selections from *ChinaSong*, a piece that celebrates the group's rich Chinese heritage.

**Peak Performances@montclair:**

973-655-5112, online: [www.peakperfs.org](http://www.peakperfs.org),  
e-mail [peakperfs@mail.montclair.edu](mailto:peakperfs@mail.montclair.edu) \$15



**On-going**

**Video Vignette Interviews with Chinese Artists**

A series of vignettes will be aired in conjunction with the events. Produced by Montclair State University Broadcasting Department, the interviews will feature Chen Lusheng (scholarly style painter, Research Director, National Art Museum of China); Cheng Dali (landscape artist, the Editor-in-Chief of General Fine Arts Publishing House of China); Fan Chuxiong (flower painting artist, Professor and Associate Dean of Fine Art School, Guangzhou Academy of Fine Arts, Guangzhou); Li Yang (figurative painting artist, Professor, Associate Dean of College of Chinese Painting, Central Academy of Fine Arts, Beijing); Sun Yumin, (female figurative painting artist, Professor, Academy of Arts and Design, Tsinghua University, Beijing), Wang Huangsheng (ink painting artist, Director, Guangdong Art Museum). as well as Zhiyuan Cong (color painting artist, Professor, William Paterson University, NJ)  
**Producer:** Marc Rosenweig, Department of Broadcasting, Montclair State University

**Library Exhibition**

**Sprague Library Lobby Showcase**

Sprague Library will feature a special exhibition of books and materials on China.

## ORGANIZED BY

Montclair State University's  
Global Education Center  
George Segal Art Gallery  
John J. Cali School of Music

**Departments of:**  
Art and Design  
Broadcasting  
Curriculum and Teaching  
Earth and Environmental Sciences  
Health and Nutrition Sciences  
History  
Linguistics  
Mathematical Sciences  
Political Science and Law



*This Festival was made possible by a grant from the New Jersey Council for the Humanities, a state partner of the National Endowment for the Humanities. Any views, findings, conclusions, or recommendations in this festival do not necessarily represent those of the National Endowment for the Humanities or the New Jersey Council for the Humanities.*

All of the programs are open to the public. Unless otherwise noted, programs are free. Digital images of selected artwork are available upon request.

**Directions:** Montclair State University is located on Valley Road. and Normal Avenue in Montclair, New Jersey. The main entrance is on Normal Avenue. For detailed directions go to: [montclair.edu/welcome/directions.html](http://montclair.edu/welcome/directions.html).

For a complete list of participants and events, visit: [montclair.edu/globaled/chinesefestival](http://montclair.edu/globaled/chinesefestival). For further information please call: 973-655-4185 or visit: [montclair.edu/globaled/events](http://montclair.edu/globaled/events).

