

# Technical Specifications - v5.3

Last updated (1/30/2024)

## ALEXANDER KASSER THEATER

Lobby, Amphitheater & Kasser Studio 104

Montclair State University

Kasser Theater

1 Normal Ave

Montclair, NJ 07043

GPS → Alexander Kasser Theater

Public Parking is in Red Hawk Parking Deck, adjacent to the theater

### Contact Information:

Hillery Makatura

Director of Production Operations

[makaturah@montclair.edu](mailto:makaturah@montclair.edu)

O: 973-655-4455

Andy Dickerson

Production Manager

[dickersona@montclair.edu](mailto:dickersona@montclair.edu)

O: 973-655-3189

Colin Van Horn

Technical Director

[vanhornc@montclair.edu](mailto:vanhornc@montclair.edu)

O: 973-655-4023

Kevin Johnson

Sr. Production Engineer

[johnsonk@montclair.edu](mailto:johnsonk@montclair.edu)

O: 973-655-4012

Jason Flamos

Lighting Supervisor

[flamosj@montclair.edu](mailto:flamosj@montclair.edu)

# Table of Contents:

Click to Navigate

<b>DRESSING ROOM INFORMATION</b>	<b>3</b>
<b>SEATING CAPACITY AND STAGE DIMENSIONS</b>	<b>4</b>
<b>FLY SYSTEM</b>	<b>5</b>
<b>SOFT GOOD INVENTORY</b>	<b>5</b>
<b>PLATFORM INVENTORY</b>	<b>6</b>
<b>CHAIR INVENTORY</b>	<b>6</b>
<b>ORCHESTRA SHELL</b>	<b>7</b>
<b>LIGHTING</b>	<b>8</b>
<b>AUDIO INFO AND INVENTORY</b>	<b>10</b>
<b>VIDEO INFORMATION AND INVENTORY</b>	<b>12</b>
<b>MUSICAL INSTRUMENTS</b>	<b>13</b>
<b>RIGGING/SHOP</b>	<b>13</b>
<b>STUDIO 104</b>	<b>14</b>
<b>KASSER LOBBY</b>	<b>15</b>
<b>AMPHITHEATER</b>	<b>16</b>
<b>TRAVEL/DIRECTIONS</b>	<b>17</b>

# DRESSING ROOM INFORMATION

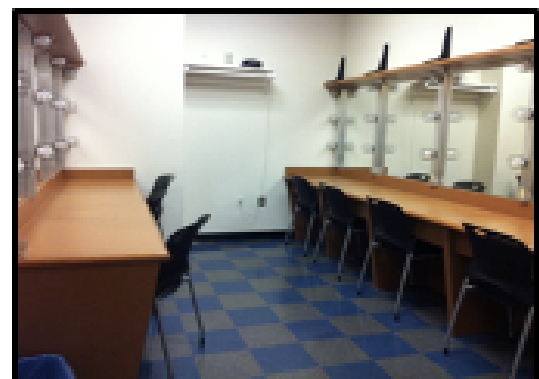
<b>Lockable Dressing Rooms:</b>	
Dressing room 312	8 people
Dressing room 317	2 people
Dressing room 318	8 people
Dressing room 319	2 people
Dressing room 320	8 people
Dressing room 321	2 people
Guest Suite (w/private bath)	1 person
<b>All dressing rooms and green room include audio and video stage monitoring and paging</b>	
<b>Showers</b>	
Green Room	2
Guest Suite	1
<b>Wardrobe</b>	
Washers	2
Dryers	2
Steamer	1
Irons/Ironing Boards	2
Clothing Racks	8
Sewing Machine	1
Serger	1
Sink	1
Spinner (delicates)	1
<b>Green Room</b>	
Located backstage, upstage left	
Tables	1+
Chairs	6+
Couches	3+
<b>Kitchen</b>	
Microwave	1
Oven/Stove (electric)	1
Refrigerator/Freezer	1
<b>Rehearsal Room (Studio 104)</b>	
Dimensions	47'x34'
Floor	Harlequin
<i>See Studio 104 Section for details</i>	
<b>Gym</b>	
The theater has no workout facility.	
<b>Wifi / Internet Access</b>	
Username and Password will be provided at the start of the presented engagement.	



2 Person Dressing Room



Green Room



8 Person Dressing Room

# SEATING CAPACITY AND STAGE DIMENSIONS

Permanent Seating Capacity		463
Orchestra Seats		288
Mezzanine Seats		175
“Presidential Seats” (side seating chairs)		36
Usual Seating Capacity		463
Add Presidential Seating		499
Add Pit Cover and Presidential		534
Additional Standing Room Capacity is available for some engagements 35 Orchestra Pit cover seats available for some engagements. Please inquire for more information		
STAGE DIMENSIONS		
Proscenium	Imperial	Metric
Max Opening Width	47'7.25"	14.5m
Max Opening Height	24'2.5"	7.4m
Minimum Width (false legs)	39'10"	12.1m
Min Height (False Header)	18'5"	5.6m
Apron*		
Depth	3'	0.9m
Widest Width	12'6"	3.8m
*with orchestra pit at deck level		
Orchestra Pit		
Length	39'	11.9m
Widest Width (CS)	9'4"	2.8m
Narrowest Width (SR&SL)	39'10"	12.1m
Travel Distance (stage down)	10'0"	3.05m
Max Load (moving)	5,500lbs	7030kg
Max Load (stationary)	46,000lbs	20,865kg
NOTE: Orchestra Pit Cannot be moved in performance		
Stage Left Wing		
Width (with Obstructions)	50'	15.2m
Depth	40'	12.2m
Stage Right Wing		
Width (with Obstructions)	52'	15.8m
Depth	40'	12.2m
There is a cross-over available upstage of the back wall of the stage		
Stage		
Total Width (Sprung)	71'4"	21.8m
Total Depth	40'	12.2m
Freight Elevator		
Max Door Width	7'	2.13m
Elevator Width	8'	2.43m
Length	10'	3.04m
Height	15'6"	4.72m
Max Load	7000lbs	3174kg
Stage Floor	Imperial	Metric

Sprung Stage Floor	Harlequin	
Stage Facing Material	Masonite	
Dist. From plaster line		
Back of House	-49'7"	-15.1m
Edge of Orchestra	-13'1.25"	-4m
Edge of stage	-3'7"	-1.1m
Front of proscenium	-2'	-0.6m
Fire Curtain	+3"	0.076m
US Edge of Pocket	+8.25"	0.21m
False Hard Header	+1'3"	0.38m
False Hard Legs	+1'11"	0.58m
Main Curtain (black)	+2'7"	0.775m
First Available fly bar	+3'11"	1.0m
Last onstage Fly Bar	+39'3"	11.9m
Back Wall	+40'5"	12.3m
<b>Marley Dance Floors</b>		
Harlequin Reversible Pro	Black	TV Gray
Width	6'6.5"	2.0m
Length (6 Rolls)	~65'	~20m
Length (1 Roll)	~52'	~16m
Harlequin Cascade White	White	N/A
Width	6'6.5"	2.0m
Length (6 Rolls)	~65'	~20m
Length (1 Roll)	~52'	~16m
ROUGH Shows (scuffed)	Black	White
Width	62"	1.57m
Length (6 rolls)	~65'	~19.8m
Length (1 roll)	~55'	~16.76m
<b>Loading Dock</b>		
Capacity of East Bay	54'	16.4m
Capacity of West Bay	33'	10m
Height Limit*	13'6"	4.1m
*13'6" Height is possible with large trucks after axles are moved and suspension lowered.		
Hydraulic dock plate available (East Bay).		

# FLY SYSTEM

FLY SYSTEM		
<i>The Kasser Theater is equipped with a double purchase counterweight system with fly rail located stage right one level above stage deck (25'5" or 7.7m). Operation of fly system is restricted to Kasser Theater Employees only</i>		
# Fully Flexible line sets	46	
Add'l line sets for Proscenium header and legs, main drape and movie screen	4	
Batten Pipe (Steel)	1.5"	Sch 40
Batten Pipe Length	52'	15.85m
High Batten Trim	48'	14.63m
Batten Travel Distance	42'	12.8m
Arbor Capacity	2000lb	900kg
Max Load		
Line Set System Pipes	750lbs	340kg
SL/SR Ladder Systems	250lbs	113.4kg
Lift Lines per lineset	5	
Height from Deck to Grid	52'	15.85m
Pin Rail Locations	SR	SL
Acoustic Ceiling Panels		
<i>3 Permanently installed acoustic ceiling panels on electric motors. Each is 11' (3.35m) deep and full stage width</i>		
#1 Distance from plaster line	8'11"	2.7m
#2 Distance from plaster line	21'	6.4m
#3 Distance from plaster line	33'	10.06m

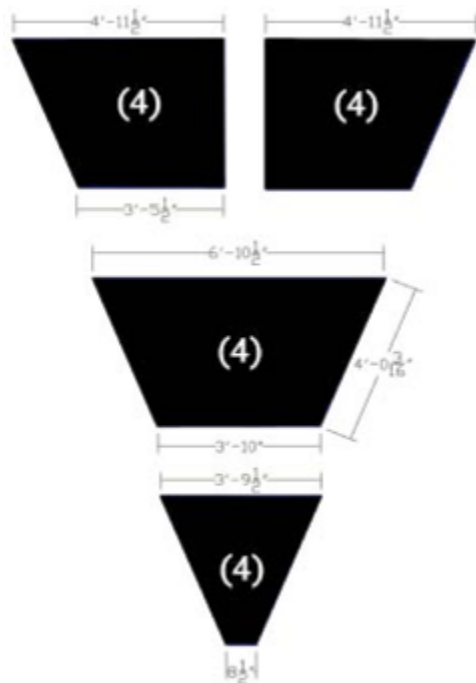
# SOFT GOOD INVENTORY

SOFT GOODS				
Count	Width(I)	Height(I)	Width(M)	Height(M)
Black IFR Velour Legs (black velour 25 oz)				
12	12'0"	26'0"	3.7m	7.9m
Black IFR Velour Borders (black velour 25oz)				
5	52'0"	6'0"	15.8m	1.8m
6	52'0"	12'0"	15.8m	3.7m
Plastic White Bounce				
1	52'0"	25'0"	15m	6.9m
Black Sharkstooth Scrim				
2	52'0"	26'0"	15.7m	8.1m
White Sharkstooth Scrim				
1	52'0"	26'0"	15.7m	8.1m
White Cotton Cyc				
1	52'0"	25'0"	15m	6.9m
White Cotton Leno-Filled Scrim				
1	52'0"	26'0"	15.8m	7.9m
Flat Black Full Stage Drop (0% fullness)				
1	60'0"	26'0"	18.3m	7.9m
Black Main Curtain (0% fullness)				
1	60'0"	26'0"	18.3m	7.9m
Flat Black Sidetabs (German Masking)				
12	7'0"	20'6"	17.1m	6.2m
Full Black Travelers (black velour 25oz)				
2	56'0"	20'6"	17.1m	6.2m
Full Red Traveler (decorative red velour 28 oz)				
1	50'0"	22'0"	15.2m	6.7m
2 pcs, red. Travel or guillotine				
Reserved Drape (red velour 28 oz)				
1	50'0"	22'0"	15.2m	6.7m
1pc, red, bottom gold fringe, guillotine, seam in the center, not movable and operated from SR floor				



## PLATFORM INVENTORY

PLATFORM INVENTORY	Units
Wenger Signature 4-Step Choral Risers	11
4' by 8' Wenger Versalite Platforms	20
3' by 8' Wenger Versalite Platforms	20
4' by 4' Wenger Versalite Platforms	1
Wenger Versalite Angled Platforms	16
Triangle	4
Symmetrical Trapezoid	4
Left Corner Trapezoid	4
Right Corner Trapezoid	4
6" Wenger Platform Legs (makes 8" tall platform)	88
14" Wenger Platform Legs (makes an 16" tall platform)	60
22" Wenger Platform Legs (makes 24" tall platform)	68
30"-54" Wenger Telescoping Platform Legs (makes a 32"-56" tall platform)	82



## CHAIR INVENTORY

CHAIR INVENTORY	Units
Black Wenger Chairs	123
Adjustable Musician Chairs "Cello Chairs"	12
Wenger Adjustable Wooden Bar Stools	8
Black Conductor / Bass Chairs -Padded seat & backs -Adjustable Height	2
Black Herman-Miller chairs -Armless -Used primarily in Dressing Rooms	30
Black Herman-Miller chairs -Armed -Used primarily in Green Room	20
MUSIC STAND INVENTORY	
Standard Wenger Music Stands	80
Conductor Music Stands --Grey Topped	2
Conductor Music Stand -- Black Soft Fabric Top Cover	1
STAND LIGHTS	
Wenger Electric Stand light 40-watt bulb 6-foot (1.8m) electrical cord	65



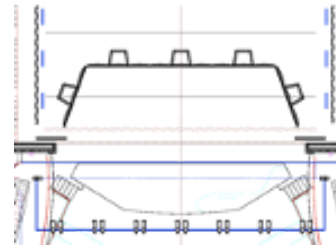
# ORCHESTRA SHELL

The shell has a blond wood finish and built in overhead lighting. There are windows in the shell for off stage visibility, and wings that fold up to help with acoustics.

## SMALL SHELL SETUP

Width: 41' (12.5m)  
 Depth (from plaster line): 13'6" (4.1m)  
 # Wall Sections: 5  
 # Ceiling Clouds: 1

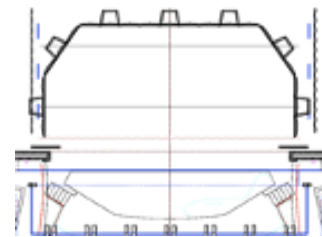
Doors: one single door that is approximately 4' wide SL an SR and double doors US that are 88" wide.



## MEDIUM SHELL SETUP

Width: 46' (14m)  
 Depth (from plaster line): 23' (7m)  
 # Wall Sections: 7  
 # Ceiling Clouds: 2

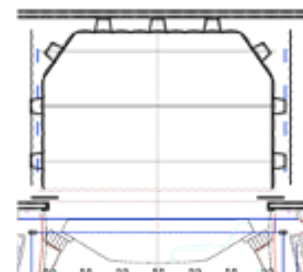
Doors: one single door SL and SR and double doors upstage.



## LARGE SHELL SETUP

Width: 46' (14m)  
 Depth (from plaster line): 35' (10.67m)  
 # Wall Sections: 9  
 # Ceiling Clouds: 3

\*Doors: It has a single door (DS) and a double door (US) on SL and SR.





# LIGHTING INFORMATION AND INVENTORY

<b>CONTROL</b>	<b>#</b>
ETC Gio 3000 Console	1
Touch Screens	3
2x10 Fader Wings	1
2x20 Fader Wing	1
Wireless System Remote (iPad Mini)	1
Portable Client Mac Laptop Control w/ x-keys	1
Dual Screen ETC Remote Station: ETC Puck w/ Programming Wing	1
DMX Hard-wired Universes of 512 (More universes available via Network Nodes)	2
Lighting and Sound consoles are set up for communication via midi or OSC	
<b>REPERTORY PLOT INSTRUMENTS:</b>	
ETC Source Four 19-degree fixtures	16
ETC Source Four 26-degree fixtures	2
ETC Source Four 36-degree Fixtures	2
ETC Source Four 15/30 Zoom fixtures	18
ETC Source Four PAR WFL Fixtures	4
<b>LIGHTING INSTRUMENT INVENTORY (beyond repertory instruments):</b>	
ETC Source Four Ellipsoidal Fixtures	132
ETC S4 5-degree tubes	12
ETC S4 10-degree tubes	9
ETC S4 19-degree tubes	19
ETC S4 26-degree tubes	68
ETC S4 36-degree tubes	53
ETC S4 50-degree tubes	19
ETC S4 LED Version 2 Lustrs	12
S4 LED Cyc Adaptors	10
ETC S4 25-50 Zooms	9
Altman Par 64*	58
*End of Life. Please confirm availability and lamping options	
<b>ETC ELLIPSOIDAL NOTES/ACCESSORIES</b>	
S4 Size A Template Holders	33
S4 Size B Template Holders	18
ETC S4 Drop-In Iris	11
S4 Ellipsoidal Top Hats	50
S4 Ellipsoidal Eyelashes (1/2 Top Hat)	12
S4 Ellipsoidal Donuts	51
S4 Zoom Top Hats	18
ETC Source Four Pars	29
750w Lamps, various lensing options VN5P, NSP, MFL, WFL Lens Available (CP60, CP61, CP62, CP95 lamps)	
Selecon 2k Fresnels	12
Altman 2k Fresnels	10
Altman 1k Fresnels	20
Arri 5k Fresnels	4

4 Cell Hanging 1kw Cycloramas	7
4 Cell Ground Row 1kw Cycloramas	7
1 Cell Ground/Hanging 1kw Cycloramas	24
4 Circuit MR16 8ft Strip Lights	10
<b>INTELLIGENT / OTHER FIXTURES:</b>	
Atomic Strobes - 208v Power	4
24" Mirror Ball - DMX Motor	1
Robert Juliat MSR 1200 Follow Spots Location: Spot Booth on 3rd Catwalk	2
<b>ACCESSORIES</b>	
18" Side-Arms	45
Aluminum Side arms (Film Version)	21
50lb Base Booms - Altman Cast Iron	14
Cast Iron Floor Plates - 10lbs w/ 1/2" Bolt	24
1.5" Schedule 40 Pipe	Var.*
* Various lengths and quantities of 1.5" black, schedule 40 steel pipe is available. Lengths are commonly: 1ft, 2ft, 3ft, 4ft, 5ft, 6ft, 8ft, 10ft & 21ft.	
<b>ATMOSPHERE GENERATING EQUIPMENT</b>	
MDG Atmosphere Haze Generator DMX / Manual Control CO <sub>2</sub> / Fluid Operated	1
Martin / Jem ZR33 Fog Machine DMX / Manual Control / Fluid Operated	2
<b>POWER / DIMMER INFORMATION</b>	
200 Amp Camlock Company Switch @ Dock	1
200 Amp Camlock Company Switch @ SL	1
L6-20 208v Circuits located Stage Left	6
L6-20 208v Circuits located in the Booth	2
L6-30 208v Circuit located in Booth	1
L21-30 circuits (3 each SL & SR on proscenium wall)	6
30 Amp 480v circuits @ SR	2
208v to 220v Transformers available	4
Portable Distribution Boxes:	
L21-30 Input x (6) Breakered 20amp 120v	1
L21-30 Input to (3) Breakered 20amp 208v	1
LED Tape / Low Voltage (12v) Dimmers	
City Theatrical D4HP	2
City Theatrical D4	1
City Theatrical Show Baby	1
<b>DIMMER INFO / LOCATIONS:</b>	<b>#</b>
3x 96 ETC Sensor Racks distributed as follows:	
OVERHEAD STAGE Circuits	
1 <sup>st</sup> Electric (Permanent, Line set 6)	30
2 <sup>nd</sup> Electric (Line set 14)	24
3 <sup>rd</sup> Electric (Line set 23)	24
4 <sup>th</sup> Electric (Line set 32)	24
5 <sup>th</sup> Electric (Line set 46)	24
Note: 4 <sup>th</sup> and 5 <sup>th</sup> electric can be assigned to different line sets. Please inquire for more info	
STAGE Circuits	
DSL @ Proscenium	4



DSR @ Proscenium	4
US Back Wall	18
Available	22
HOUSE LEFT TORM Circuits	
Used in Rep Plot	3
Available	3
House Right Torm	
Used in Rep Plot	3
Available	3
SR "Rail" Pass-Thru Circuits from FOH	
Available	12
SL "Jump" Pass-Thru Circuits from FOH	
Available	18
SR Drop Boxes (Ladders/Jump)	
Available	13
SL Drop Boxes (Ladders/Jump)	
Available	16
<b>DMX DISTRIBUTION</b>	
DSL	1
DSR	1
USL	1
USR	1
2 <sup>nd</sup> Electric Raceway	1
Grid (available @ any lineset)	2
SL Jump	2
3 <sup>rd</sup> Catwalk	1
2 <sup>nd</sup> Catwalk	1
Balcony	3
<b>POWER/DIMMER INFORMATION</b>	
<p>*All Power is 60 Hertz</p> <p>*Main Dimmers are 2.4 kilowatts</p> <p>*Main Dimmer Modules are ETC Sensor D20E</p> <p>*ETC Sensor R20E Modules Available</p> <p>*5kw Fixtures use a 6 x 6000watt dimmer ETC Sensor rack</p> <p>*ETC Lighting System runs in Net2</p> <p>*Various Net2 Cat6 Ports available:</p> <p>SR-Downstage + Upstage</p> <p>SL- Downstage + Upstage</p> <p>House Electrics- 2+3</p> <p>Upstage wall- Located at fly height</p> <p>Balcony Rail- House Right and Left</p> <p>Catwalk- 2nd Catwalk on house left side</p> <p>Grid- 2 located stage right and stage left of grid</p> <p> * (POe switch distribution)</p> <p>Inquire about positioning.</p> <p>Can be distributed to any electric, balcony, SR or SL wing position.</p>	

# AUDIO INFO AND INVENTORY

CONSOLE	
Yamaha CL5 72/24	1
Dante-My16-AUD2	Slot #1
8 Chan. Line Level XLR Input	Slot #2
ADAT (reps connected to Motu)	Slot #3
Dante 3224-D Stage Box(Stage Left)	1
Dante 1608-D Stage Box (Floating)	1
Dante 8 Channel Output (Booth - Rep)	1
MOTU 828 mk3 FireWire Interface	1
MOTU 828x Thunderbolt Interface	1
<i>Lighting and Sound consoles are set up for communication via midi or OSC</i>	
AUXILIARY CONSOLES	
Yamaha LS9-32/64	1
Ethernet Sound Card	
Ethernet Sound SM168 Stage Box	
8 Chan. Line Level XLR Input	
WiFi Controlled Soundcraft UI-12	1
SPEAKERS	
MAIN FOH SYSTEM (D&B POINT SOURCE SYSTEM)	
L,R,C System:	
Y7P	6
Y10P	1
8S Surrounds	20
E5 Front Fills	6
E6 Under balcony delays	2
Flown Cardioid Y-Subs	4
MONITORS/EXTRA SPEAKERS:	
DB Technologies S20 (subwoofer)	2
Meyer UPJunior	2
Meyer UPA-1P	2
EAW JF80 (2 are balc rail rep ds foldback)	6
Meyer UPM-1P	6
DB Technologies DVX DM 12k(Active)---12" foldback	4
RCF 5212C 12" (Passive) (rep overhead)	8
Renkus---Heinz MR5 (Passive - 12")	4
Galaxy Audio PA5X140 (Active)" Hotspot"	2
Anchor Audio AN-1000X (Active)-Monitor	1
QSC K12 12" (Active)	2
QSC KS 118 Subwoofer 18" (Active)	2
WIRELESS IN-EAR:	
Shure PSM200 In-Ear Transmitter	1

Shure Receivers (same single)	2
AMPLIFIERS:	
Crown MacroTech2400	6
QSC 4-Channel Amps (Rep)	2
AUDIO / VIDEO PLAYBACK / CTL:	
Mac Mini - 2ghz Intel / 16gb Mem Mac OS 10.15 Qlab 5 Connects to MIDI via MOTU At FOH for playback and control	1
Mac Pro (Late 2013) – 3 GHz 8-Core Intel Xeon E5 / 32 GB 1866 MHz DDR3 Mac OS 10.15 Q-Lab 5 / Isadora 2 OSC Router In AV booth for playback, control, or recording	1
Mac Mini Server (Mid 2011) – 2 GHz Intel Core i7 / 16 GB 1333 MHz DDR3 Mac OS 10.13 Q-Lab 4 In AV booth for lobby playback or control	1
Mac Mini (Late 2012) – 2.5 GHz Dual-Core Intel Core i5 / 4 GB 1600 MHz DDR3 Mac OS 10.15 Q-Lab 4 OBS In AV booth for streaming, playback, or control	1
Mac Mini () – Mac OS 10.15 In wireless rack stage left for A2 monitoring and control	1
MacBook Pro (Retina, 15-inch, Mid 2015) -2.8 GHz Quad-Core Intel Core i7 / 16 GB 1600 MHz DDR3 Mac OS 10.15 Q-Lab 4 OBS Vectorworks 2020 (Spotlight & ConnectCAD) In AV booth for streaming, playback, or control	1
STAGE MANAGEMENT / COMM	
Backstage Portable SM Station	1
Time/Clock	1
Clear Com Remote Station w/ Paging	1
32" LCD Monitors mounted SR+SL with a FOH Video Camera Feed	2
32" LCD Monitor on Balcony Rail	1

6 Channel Cue Light System Available 6 lights with 1 control panel	1
<b>COMMUNICATION / INTERCOM</b>	
Clear-Com 4-Chan. Remote station (RM 440) @ Backstage, Tech Table, Booth	3
Freespeak II Base Station	1
Freespeak Wireless Beltpacks	6
Clear-Com (RS-501) belt packs (1 ch)	8
Clear-Com (RS-502) belt packs (2 ch)	1
Clear-Com (CC-95) single muff headsets	8
Clear-Com (CC-250) double muff headsets	1
Clear-Com (HS6) telephones	2
<i>All dressing rooms and green room include audio and video stage monitoring and paging</i>	
<i>Please inquire for most up-to-date information on intercom systems</i>	
<b>MICROPHONES (WIRED)</b>	
Shure SM57	4
Shure SM58	6
Shure SM58S	3
Shure Beta 58A	3
Shure Beta 57A	8
Shure SM 81	4
Shure Beta 52A	1
Shure VP 88 (stereo)	1
DPA 4099s with various mounts	12
Electro-Voice RE20	1
Audio-Technica AT825A	5
Crown PCC 160	10
Crown PZM---30D	2
AKG 535EB	6
AKG C391B	3
AKG C419	4
AKG C568	1
Neumann TLM 170 r	3
Neumann KM184 ni	6
Sennheiser MD 421---II	4
Sennheiser MD---441	5

Sennheiser e904	2
Sennheiser e906	2
BSS (AR133) direct boxes	7
Radial JPC Stereo PC DI	2
Radial Pro DI	1
DAN-TX 2-CH Dante Receiver	1
DAN-RX 2-CH Dante Receiver	3
Schoeps MSTC 64 U (stereo pair)	1
<b>WIRELESS TRANSMITTERS/RECEIVERS</b>	
Shure AD2 KSM8 Handhelds	8
Shure AD1 Bodypacks w/ Lemo3	6
Shure ADX1M bodypacks	8
AD4Q Axient Receiver 470-616	5
Sennheiser SK-5212II - (bodypack) Freq: 470-638MHz	8
Sennheiser SK-3063 (bodypack) Freq: 584-607MHz	8
Sennheiser EM3032-U (Dual Receivers)	4
<b>MIC STANDS WITH BOOM ARMS</b>	
AKG KM-259, blk. 92cm - 162cm	10
AKG KM-259, blk. 44cm - 64cm	14
AKG KM-210, blk) 89cm - 63cm	6
Atlas (MS---25E) triangle weighted base 95cm - 159cm.	4
<b>MOTOROLA COMMUNICATION EQUIPMENT:</b>	
Various CP200 4-Channel Radios for Stage and Front of House Staff Use.	
<b>FREQUENCY INFORMATION:</b>	
Range MIN	Range MAX
2-Way Mobile Radios:	
451.3125MHz	452.8125MHz
Shure Axient Wireless	
470MHz	616MHz

# VIDEO INFORMATION AND INVENTORY

PROJECTORS	
Panasonic HD 20k Projector (PTDZ21KU)	1
<i>Rep position @ the rear of balcony</i>	
Lens Optics Options:	
-ET-D75LE50 Fixed 0.70:1	1
-ET-D75LE6 Zoom 0.90:1-1.10:1	1
-ET-D75LE10 Zoom 1.30:1-1.70:1	1
-ET-D75LE20 Zoom 1.70:1-2.40:1	1
-ET-D75LE30 Zoom 2.40:1-4.70:1	1
-ET-D75LE40 Zoom 4.60:1-7.40:1	1
Panasonic HD 16K Projector PT-MZ16K	2
- ET-EMS600 1.35-2.10:1	2
- ET-EMT800 4.14-7.4:1	1
VIDEO CONTROL, PROCESSING & RECORDING	
Blackmagic Design ATEM TV Studio Switcher	1
Blackmagic Hyperdeck Studio Mini Ultra HD	1
Blackmagic Design Web Presenter	1
Various Blackmagic SDI to HDMI and HDMI to SDI converters.	Inquire
<i>Venue has both a BNC RG59, HDSDI RG6, and Fiber Optic Patch System available.</i>	
VIDEO MONITORING	
iKan VX9w-S 9" IPS On-Camera Field Monitor with Scopes	1
9" CRT Monitor, B/W, Sony	2
9" CRT monitor, Color, JVC TM-R9U	1
24" CRT Toshiba TV, color	1
27" CRT Sony, TV, color	1
21" LCD Screens for Onstage Conductor Monitoring.	2
<i>Rigging Available for Balcony Rail Attachment</i>	
LG 55" Flat Screens on roving stands	2
<i>All Dressing Rooms, Green Room, Control Booth, and offices have Audio and Video Remote Monitoring of the Stage</i>	
Color Monitoring Cameras	
Marshall CV343-CSB Full-HD (3G-SDI) Compact Broadcast POV Camera	4
<i>Wide &amp; Telephoto lenses available Acts as House Camera throughout facility Installed permanently on FOH Balcony Rail, Lobby, Studio 104, and 1 Spare</i>	
Sony BR-1000 4K PTZ with fiber connection to Broadcast and Media Operations broadcast facility	6



## MUSICAL INSTRUMENTS

PIANOS	
Yamaha Concert Grand Piano	1
54" Mason & Hamlin Upright Piano	1
Schafer & Sons VS53 Upright (Studio 104)	1
Yamaha CP40 Electric Piano	1
Steinway Model 1098 Upright Piano (Guest Suite)	1
AMPLIFIERS	
Fender '65 Twin Reverb 85w (Reissue)	1
Fender Modern Deluxe	1
Ampeg SVT---3Pro Bass Head	1
Ampeg SVT---410HLF Cabinet	1
Ampeg SVT---15E Cabinet	1
PERCUSSION	
Gretsch "New Classic" Drum Kit <i>(Vintage Marine Pearl, Evans Coated Heads on All Drums)</i>	1
Bass Drum (14" x 18")	1
Rack Tom (8" x 12")	1
Floor Tom (14" x 14")	1
Floor Tom (16" x 16")	1
Snare Drum (5 ½" x 14")	1
DW High---Hat Stand	1
Cymbals Stands	3
DW5000 Kick Pedal	1
Drum Throne	1
Snare Stand	1
Glockenspiel - Yamaha Deagen No 1590	1
Yamaha Vibraphone YV3710	1
Yamaha Marimba YM5104A	1
Yamaha Timpani's 5 Drum Set TP7300 or TP6300	5
Large Gong - Unbranded	1
Medium Gong - Zildjian	1
Pearl - Concert Bass	1
Yamaha Xylophone YX350a	1
Yamaha Chimes DC9190	1
Percussion Accessory Table	2

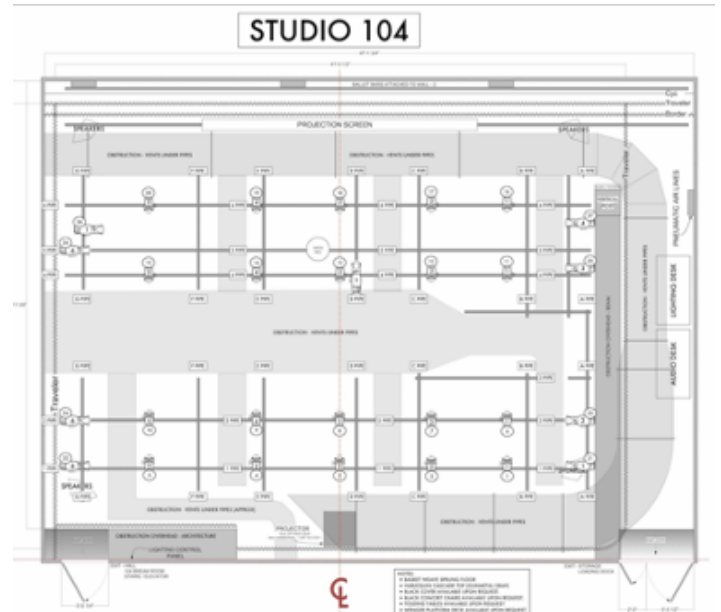
## RIGGING/SHOP

CHAIN MOTORS	
CM LodeStar Model-F	4
½ Ton, 16' per minute, 60' lift,	
208V - 30amp Power	
Motion Laboratories Power Distribution and Control System	
TRUSS TOMCAT CORE TRUSS	
10' x 12" x 12" Lengths	8
8' x 12" x 12" Lengths	2
4' x 12" x 12" Lengths	2
1' x 1' x 1' 4-way corner blocks	4
10' x 20.5" x 20.5" Lengths	2
8' x 20.5" x 20.5" Lengths	1
All necessary hardware for assembly	
<b><u>Scene/Fabrication Shop Information Available Upon Request</u></b>	

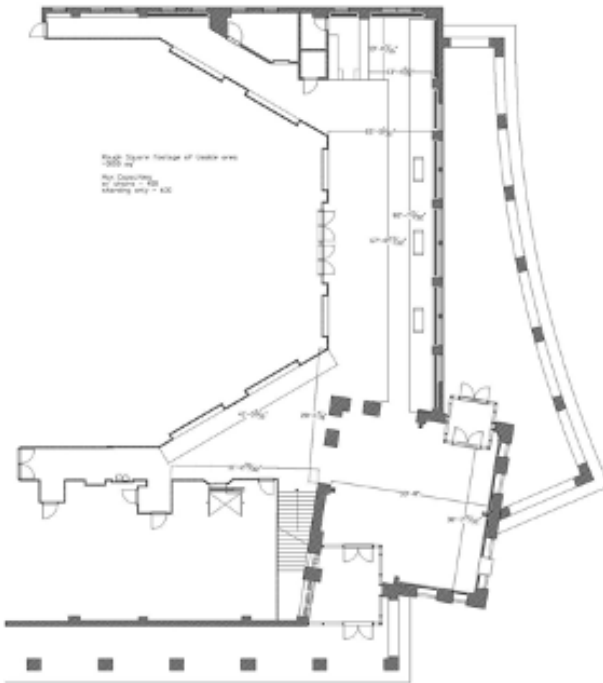
# STUDIO 104

Studio space available for warm ups, classes, or rehearsal space.

FACILITY
Harlequin installed Cascade gun metal gray sprung marley floor dance surface* *black marley covering available for tough use projects / events
Adjustable height dance barrels along the far wall.
Black Velour Travelers along each wall - Can be moved via installed curtain tracks
PROJECTION
Retractable Da-Lite Cinema Tensioned Cosmopolitan Projection Screen
Sony Laser VPL-FHZ65 6000 Lumens Projector (Lens: 1.39 to 2.31)
SOUND SYSTEM
Soundcraft UI16 Mixer Wifi Controlled Digital Mixer
(2) Crown Macro Tech 2400 amps
(8) Reinkus Heinz Speakers (4) clusters of (2) (room can turn 90 degrees in rep)
LIGHTING
(20) ETC ColorSource PARs
(9) ETC ColorSource Spots @ 50 degrees
ETC Echo Touch lighting control
ROOM CAPACITY
w/tables & chairs (dining) - 72
w/chairs - 70-96 depending on layout
Standing only – 21



# KASSER LOBBY



*More Information available upon Request*



# AMPHITHEATER

## Historically:

*“The federal Works Progress Administration constructed an amphitheater for what was then known as Montclair State Teachers College. The 2,000-seat theater was constructed into a hillside, its 22 tiers of seats measuring between 92 and 190 feet long. The stage, at construction, measured 70 feet by 40 feet and contained a tree in the middle. An orchestra pit in front of the stage measured 70'-by-30'.”*

**Playing Area: 65' 7" wide x 33'5" deep**

**Brief Lighting Info: Two stage towers both house 3 LED flood lights**

**Audience towers hold 1 LED flood on left and right tower**

**Front of house holds 4 halogen 1000w bulbs on left and right tower**

**3x 96 etc dimmer rack w/ socko allocated to space**

**Brief Power Info: Coming Soon**

# TRAVEL/DIRECTIONS

**Alexander Kasser Theater**

**Montclair State University**

**Montclair, NJ 07043**

**Box Office: 973-655-5112**

**Technical Questions: 973-655-4021**

**Email: [gravesj \(at\) montclair.edu](mailto:gravesj@montclair.edu)**

**<http://www.peakperfs.org>**

**For Detailed Directions - Perform a Google Map**

**Search for: "[Alexander Kasser Theater](#)"**

## GPS DIRECTIONS:

In the right-hand column you will find directions to the Kasser Theater from all points by car and by public transportation. If you are utilizing GPS to visit us, please use the following information when entering directions into your GPS: Enter 22 Normal Avenue, Montclair, NJ 07043. This will take you to the entrance of the campus. Turn right off of Normal Ave. on to campus, the Kasser Theater and Red Hawk parking deck will be directly in front of you.

## FROM POINTS NORTH:

Take Garden State Parkway to Route 46 West (exit 154). Exit onto Valley Road (south) toward Montclair. \*

## FROM POINTS SOUTH:

Take Garden State Parkway to Route 3 West (exit 153B). Exit onto Valley Road (south) toward Montclair. \*

## FROM MIDTOWN MANHATTAN:

Take Lincoln Tunnel to Route 3 West for approximately 10.5 miles. Route 3 will merge to Route 46—stay right. Take first exit immediately after the merge, onto Valley Road (south), toward Montclair. \*

## FROM UPPER MANHATTAN

Take the George Washington Bridge to Route 80 West. Take Exit 62 to merge onto the Garden State Parkway South. Take Exit 154 for Route 46 toward Clifton. Exit onto Valley Road toward Paterson/Montclair. \*

\*Once on Valley Road (south) – Stay on Valley Road for one mile to the first traffic light. Turn right onto Normal Avenue. Then make another right into the main entrance of the campus. The Alexander Kasser Theater will be directly in front of you. Convenient parking is available at the Red Hawk Parking Deck adjacent to the theater.

## PUBLIC TRANSPORTATION (Bus)

DeCamp Bus Lines runs busses from NY Port Authority, routes 66 and 66R. Travel time is roughly 25 minutes. The first stop on weekdays is Montclair University Bus Stop, which lets you off at the base of the Kasser

Theater. On off-times, the bus lets off at Valley Road and Mt. Hebron Road. You must then walk along Valley (cemetery on your right) and make a left onto Normal Avenue. Make a right on College Avenue and head up the hill. Kasser Theater is the building at the top of the hill in front of you. For bus schedules, please check [www.decamp.com](http://www.decamp.com).

## PUBLIC TRANSPORTATION (Train)

### (weekdays only)

NJ Transit Railroad is the recommended method of public transportation. Midtown Direct operates between NY Penn Station and Montclair Heights (not Montclair State University) and travel time is approximately 45 minutes. Exit the train at the Montclair Heights Station and walk along Normal Ave towards the campus (you will pass a football field on your left). At the entrance to campus, turn left on College Ave and walk up the hill. Kasser Theater is the building in front of you at the top of the hill. Go to [www.njtransit.com](http://www.njtransit.com) or call NJ Transit at 973-275-5555 for more information.

