

Commuter Life

New Student Orientation
Summer 2009

Welcome to Montclair State University

Class of 2013 Commuter Families!

Who we are

- The Center for Student Involvement (CSI)
 - Your student's connection to campus
- Julie Fleming
 - Evening & Weekend Program Coordinator
- Stephanie Wright
 - Leadership Coordinator for Fraternities & Sororities



Parking

- First Year Students (commuters—your student!) **MUST** park in the NJ Transit Deck
- The fee for the NJ Transit Deck parking pass is \$250 per year (\$125 per semester) + one-time \$15 activation fee
- First-year students have the option to purchase a weekend permit for \$80, which allows them to park in general lots between 6pm Friday and 6am Monday
- Metered parking is also available at an hourly rate and is enforced 24/7

Parking

- Citations for parking violations are issued all day. (READ THE SIGNS!!) Cars with \$100 or more in outstanding fines will be **BOOTED** and/or **TOWED!** Seriously.
- **Your student needs to READ THE PARKING REGULATIONS** at www.montclair.edu/parking
- Your student should watch their **MSU email** over the summer for announcements regarding parking registration.
- www.montclair.edu/parking

Parking & Campus Shuttles

- NJ Transit Discounts
 - 25% monthly discount for students
 - Visit www.montclair.edu/njtransit for information and to sign up—you must sign up online.
- Free NJ Transit week (September 2009 dates TBA)
 - Students ride free (with valid ID) anywhere NJ Transit Buses & Trains go
- Campus shuttle service hours are 24 hours a day, and seven days a week.
- Shuttles are **free** to use
- Track shuttles on Campus Connect device
 - Schedules available online



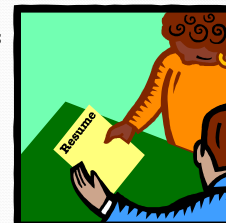
Getting Connected to MSU

- CSI (Center for Student Involvement)
 - www.montclair.edu/csi
- Athletics
 - www.montclair.edu/athletics
- Campus Recreation
 - BRAND NEW Student Recreation Center
 - www.montclair.edu/campusrec



Student Organizations

- SGA (Student Government Association, Inc.)
 - www.montclair.edu/sga
- Over 100 student organizations
- Greek Life
 - 35 Fraternities & Sororities
- Leadership Opportunities



Getting Connected to MSU

- FIRST YEAR FRENZY
 - Week of programming dedicated to connecting your first year student to campus
- MSU Email (webmail.montclair.edu)
 - Your student should CHECK IT DAILY!!!
 - It is your students' *responsibility* to check their email and stay informed. Very few items are sent on paper.
 - Get In The Loop
- Blackboard (<http://blackboard.montclair.edu>)
 - "How To @ MSU" Community
 - Online companion to many classes

Commuter Connection

- Red Hawk Nest—Student Center 1st Fl., past bookstore
 - Commuter lounge: watch TV, do homework, relax
 - Sometimes we have food for commuters! ☺
- CARS (Commuter Association Resources and Services)
 - www.montclair.edu/csi/cars
- Commuter Resource Guide (available online)
 - Includes:
 - Studying & Hang Out Spots
 - Food Info
 - Transportation Info
 - Locker Rental Info

Things Your Commuter Student Should Know

- The first week of class
 - GET HERE EARLY!! Your student should plan to arrive at least one hour prior to the start time of your first class.
 - Parking can be challenging, and should be planned for
 - Information booths will be set up around campus to help navigate MSU
- On Campus Jobs
- Dining Services
 - Commuter Meal Plans & Red Hawk Dollars
- Campus Connect

Other things to know:

- Students should have their MSU ID with them whenever they are on campus.
- What about inclement weather/delays/closings?
 - Notification to Campus Connect registered cell phone
 - MSU website
 - 973.655.7810 (weather hotline)
- How many students commute?
 - Approximately 80% of our students commute—they are not alone! Encourage them to connect with fellow commuters (carpool?) and residential students!

Now that your student is here...

- Your relationship may change, even if your student is living at home.
- Class hours are very different from high school—classes are in session daily from 8:00am (sometimes 7:00am!) until 10:45pm.
- Events happen all the time—commuters are especially invited to participate.
- Encourage your student to maximize their time here. Help them develop their own identity and become self-sufficient.

A Final Thought...

- Encourage your student to create their own “true college experience” here at Montclair State University.
 - Use their resources
 - Get involved
 - Students who get involved are more likely do better academically and have a more satisfying experience!
 - Know what is expected—if they don't know, ask!
 - Familiarize themselves with campus policies and procedures
 - Enjoy their time at Montclair State University!

Questions?

- Visit CSI: www.montclair.edu/csi
 - csi@mail.montclair.edu
 - Julie Fleming—flemingj@mail.montclair.edu
 - Stephanie Wright—wrightst@mail.montclair.edu
 - Student Center Room 104
 - 973.655.7818
- WELCOME TO MONTCLAIR STATE UNIVERSITY!