

**Montclair State University**

**COMMUTER  
RESOURCE  
GUIDE**



**Compliments of CSI**

# TABLE OF CONTENTS

<u>CONTENT</u>	<u>PAGE</u>
<b>Useful</b> .....	<b>1</b>
<b>Numbers</b>	
<b>Transportation</b> .....	<b>2</b>
<b>Lockers</b> .....	<b>2</b>
<b>Dining Service</b> .....	<b>3</b>
<b>Dining</b> .....	<b>4</b>
<b>Services</b> <b>(cont.)</b>	
<b>Microwaves</b> .....	<b>5</b>
<b>SGA</b> .....	<b>5</b>
<b>Hangout Spots</b> .....	<b>6</b>
<b>Indoor Games</b> .....	<b>6</b>
<b>Fitness</b> .....	<b>7</b>
<b>Newspapers</b> .....	<b>7</b>
<b>ATMs</b> .....	<b>8</b>
<b>Off Campus</b> .....	<b>8</b>
<b>Housing</b>	
<b>Computer Labs</b> .....	<b>9</b>
<b>MSU Campus</b> .....	<b>10</b>
<b>Connect</b>	
<b>Peak</b> .....	<b>10</b>
<b>Performances</b>	
<b>Getting</b> .....	<b>Back</b>
<b>Involved</b>	<b>Cover</b>
<b>Getting</b> .....	<b>Back</b>
<b>Information</b>	<b>Cover</b>



## **Useful Numbers:**

Center for Academic Advising & Adult Learning (CAAAL)	973-655-7114
Bursar's Office	973-655-4177
Center for Academic Development and Assessment (CADA)	973-655-4476
Center for Career Services and Community-Based Learning)	973-655-5194
Center for Student Involvement (CSI)	973-655-7818
Counseling and Psychological Services (CAPS)	973-655-5211
Dean of Students	973-655-4118
Financial Aid	973-655-4461
Health Center	973-655-4361
New Student Experience	973-655-7609
Office of the Dean of Students	973-655-4118
Registrar	973-655-4376
Residential Education and Services	973-655-5188
Services for Students with Disabilities	973-655-5431
Sprague Library	973-655-4298
Transportation and Parking Services	973-655-5223
University Bookstore	973-655-5460
University Ombudsperson	973-655-4206
University Police	973-655-5222
Weather Hotline	973-655-7810
Women's Center	973-655-5114
Writing Center	973-655-7442

We believe that no student should have to navigate their academic career alone. The Center for Academic Advising and Adult Learning is dedicated to providing services for students pertaining to their academic progress. Please visit them if there are any questions about academic program analysis, credit adjustments and changing your major. They are located in Morehead Hall in Room 132.

If you are unsure of whom your advisor is, visit the link below and follow the steps:

<http://www.montclair.edu/pages/AcademicAdvising/advisor.htm>



## **Transportation and Parking Information:**

NJ Transit Discount information visit:

<http://www.montclair.edu/njtransit/>

Parking information/instructions visit:

<http://www.montclair.edu/parking/>

Shuttle Bus information visit:

[http://www.montclair.edu/parking/transportation\\_info.htm](http://www.montclair.edu/parking/transportation_info.htm)

### **LOOKING FOR THE CHEAPEST GAS PRICES IN YOUR AREA?**

- VISIT [www.autos.msn.com](http://www.autos.msn.com)
- Scroll down and click on gas prices
  - Type in your zip code
  - Save a few cents

**OR VISIT** <http://www.newjerseygasprices.com/>

Parking Services provides free jumps when batteries die and will help with changing of tires just call 973-655-7580.



## **Student Center Lockers**

Lockers are available for use in the Student Center first floor on a first come first served basis. Lockers are issued to current MSU students with proof of current registration, MSU ID card, and \$15 deposit. If you are interested please contact the Center for Student Involvement at 973-655-7818 or drop in the SC104.



## **Dining Options:**

**Student Center Cafeteria**  
*Student Center 2<sup>nd</sup> Floor*

**Rathskeller**  
*Student Center 1<sup>st</sup> Floor*

**Student Center Dining Room**  
*Student Center 2<sup>nd</sup> Floor*

**Convenience Store**  
*Student Center 1<sup>st</sup> Floor*

**College Hall Snack Bar**  
*College Hall 1<sup>st</sup> Floor*

**Sushi House**  
*Student Center 1<sup>st</sup> Floor*

**Red Hawk Express (Cash Only)**  
*Next to Dickson Hall*

**Red Hawk Diner**  
*Behind Student Center*

**Café Diem**  
*Next to Sprague Library*

**Rocky's Nest (Cash Only)**  
*Outside Student Center (east side)*

**University Hall Snack Bar**  
*University Hall 1<sup>st</sup> Floor*

### **Commuter Meal Plan**

While it is not mandatory for commuter students to obtain a meal plan it is highly recommended. Commuter Students can either obtain a commuter meal plan or purchase Red Hawk Dollars. Details about the meal plans and Red Hawk Dollars can be found at [www.montclair.edu/diningservices](http://www.montclair.edu/diningservices)

### **Red Hawk Dollars vs. Flex Dollars**

#### **WHAT'S THE DIFFERENCE?**

Red Hawk Dollars are good anywhere on campus. Flex dollars are associated with a meal plan and only good at dining facilities.

You can learn more about these options at [www.montclair.edu/diningservices](http://www.montclair.edu/diningservices)

### **DAILY MENUS**

#### **WHAT'S ON TODAY'S MENU?**

Visit the link below and click on "menus"

For more information on dining options and meal plans please contact:

Montclair State University  
Meal Plan Office  
Valley Road & Normal Avenue  
Student Center 202 Café C  
Montclair, NJ 07043  
P 973-655-7889

[www.montclair.edu/diningservices](http://www.montclair.edu/diningservices)



**WARM IT UP – Microwaves on Campus:**

*Only available during business hours*

Commuter Lounge:	SC Annex 104
C-Store:	SC 1 <sup>st</sup> Floor
Student Government Association (SGA):	SC Annex 103

**Visit your Student Government Association (SGA) for ...**

5¢ photocopies  
 Free fax  
 SGA Discount Card  
 Stamps and envelopes  
 Free Art and Literary magazines  
 Student Handbook  
 \$5 AMC Tickets  
 Free Notary Public  
 Lamination service  
 Free Yearbook  
 Voter Registration  
 Free water & hot chocolate  
 Free condoms

**HANG-OUT SPOTS:**

Student Center Patio (*across from Red Hawk Diner*)  
 Student Center Commuter Lounge (SC-104)  
 Student Center 3<sup>rd</sup> Floor Lounge  
 Student Center Cafes  
 Student Center Rathskeller  
 Picnic tables outside Student Center  
 Seating around Student Center  
 University Hall Courtyard (*within University Hall*)  
 Lounges throughout University Hall  
 Open Area between University Hall and Dickson  
 Red Hawk Diner  
 Amphitheater  
 Café Diem

**Indoor Games:****3<sup>rd</sup> Floor Lounge:**

- Pool
- Foosball
- Board Games
- ESPN Game (basketball and football)

*Equipment can be checked out at the Info Desk by leaving your MSU ID.*

**Commuter Lounge:**

- Board Games

*Equipment can be checked out in CSI by leaving your MSU ID.*



**WORK OFF THAT STRESS**

***Fitness Center***

- Panzer Gym
- 973-655-4309

***Pool***

- Panzer Gym
- 973-655-8500

***Recreation Activities:***

- Student Center Rm. 104J
- 973-655- 5350

***Intramural Sports:***

- Student Center Rm. 104M
- 973-655-4041

***Group Fitness:***

- Student Center Rm. 104H
- 973-655-7883

***Facility Hours:***

For facility hours please visit

[www.montclair.edu/pages/campusrec](http://www.montclair.edu/pages/campusrec) or call in advance for confirmation of hours



**COLLEGIATE READERSHIP PROGRAM**

The Collegiate Readership Program provides MSU students with free weekday newspapers:

The Record (Bergen County)

The Star Ledger (Essex County)

The New York Times

USA Today



## **RUNNING LOW ON CASH?**

There are two (2) ATMs on campus which have been provided by Bank of America.

### **Locations:**

Student Center

- Outside – near bookstore

College Hall

- 1<sup>st</sup> Floor



## **SEARCHING FOR OFF-CAMPUS HOUSING?** **TAKE A PEEK IN:**

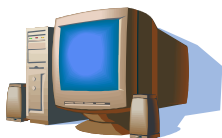
Montclair Times

The Star Ledger

The Record

Local churches

Check out the bulletin boards around campus and at local supermarkets



## **COMPUTER LABS**

### *Surfing and Printing Lab:*

#### **Student Center 1<sup>st</sup> Floor:**

- Monday – Thursday (8am – 2am)
- Friday (8am – 10pm)
- Saturday (10am – 6pm)
- Sunday (3pm – 2am)

### **24 Hours:**

#### **Information Commons**

- 5<sup>th</sup> Floor of University Hall

### ***Additional Labs:***

*Hours for these labs are posted outside each lab*

#### **Morehead Hall**

- Room 006

#### **Sprague Library**

- Room 219
- Basement (Multi-Media Resource Center)



The Campus Connect Program is a mobile phone and application service available to all students. It gives students additional resources to enable them to manage their academic and social lives. Students can identify the GPS location of campus shuttle buses, check class assignments and e-mail, see campus dining hall menus and get specials at local merchants. Users can also set up social networking groups and share their GPS location with friends.

The Mobile Guardian feature uses the same GPS technology as 911 emergency centers and students can use it on-or off location including anywhere in the US where GPS technology is available. This service allows students to ask University Police to monitor their whereabouts whenever they feel they might be in an unsafe situation. The Campus Alert system allows the University to send an immediate text message to the user in case of an extreme emergency. You can learn more about the Campus Connect program by visiting

[www.montclair.edu/pages/msuconnect](http://www.montclair.edu/pages/msuconnect)

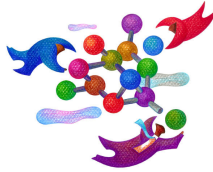
## **Peak performances** @montclair

### **Your Ticket to Exciting Music, Dance and Theater Performances!**

Undergraduate students are entitled to one (1) ticket to each program throughout the year at no additional cost as part of the University's Performing Arts Fee.

### **How do you get your ticket? It's simple!**

Visit the Alexander Kasser Theater Box Office during box office hours and present your undergraduate ID card



## **GETTING INVOLVED**

Research shows that students who get involved are more likely to succeed academically and earn a degree.

Montclair State University offers a wide variety of clubs and organizations for students to become involved. You can learn more about these existing clubs and organizations through visiting [www.montclair.edu/clubs](http://www.montclair.edu/clubs) or stop by the Commuter Lounge (SC-104) and pick up a brochure.

Be on the look-out for weekly program and activity announcements through an email you will receive every Friday called "In the Loop" or check out the online calendar at [www.calendar.montclair.edu](http://www.calendar.montclair.edu)

**THERE'S ALWAYS SOMETHING TO GET INTO AT MSU - SO JUMP IN!**



## **GETTING INFORMATION**

Searching for something? Not sure where to look?

**If you check out the MSU homepage you can do 1 of 4 things:**

1. See what the *Quick Links* have to offer
2. Ask the Student Center Info Desk
3. Check out *MSU A-Z*
4. Conduct a *Search*