

HMRARCHITECTS

821 ALEXANDER ROAD - SUITE 115
 PRINCETON, NEW JERSEY 08540
 609-452-1070 - HMR-ARCHITECTS.COM

SCALE: 1/4" = 1'-0"

DRAWN BY: JK

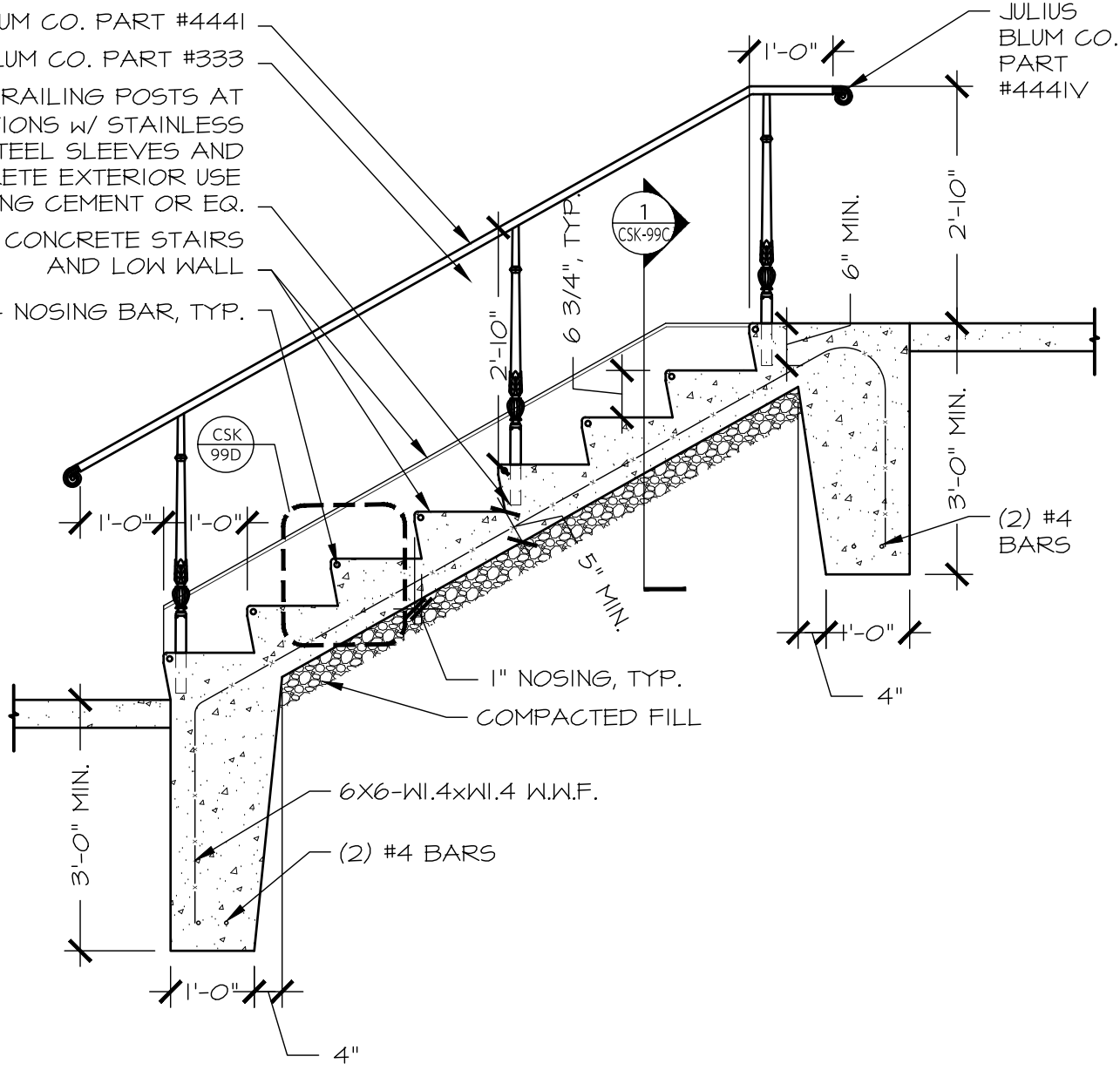
DATE: 6/10/20

PHASE 2 - STUDENT SERVICE CENTER and RENOVATION of
 COLLEGE HALL for MONTCLAIR STATE UNIVERSITY

SOUTHEAST SITE STAIRS - PLAN

CSK-99A

JULIUS BLUM CO. PART #4441
 JULIUS BLUM CO. PART #333
 ANCHOR RAILING POSTS AT
 (3) LOCATIONS w/ STAINLESS
 STEEL SLEEVES AND
 QUIKCRETE EXTERIOR USE
 ANCHORING CEMENT OR EQ.
 CONCRETE STAIRS
 AND LOW WALL
 #4 NOSING BAR, TYP.



821 ALEXANDER ROAD - SUITE 115
 PRINCETON, NEW JERSEY 08540
 609-452-1070 - HMR-ARCHITECTS.COM

HMRARCHITECTS

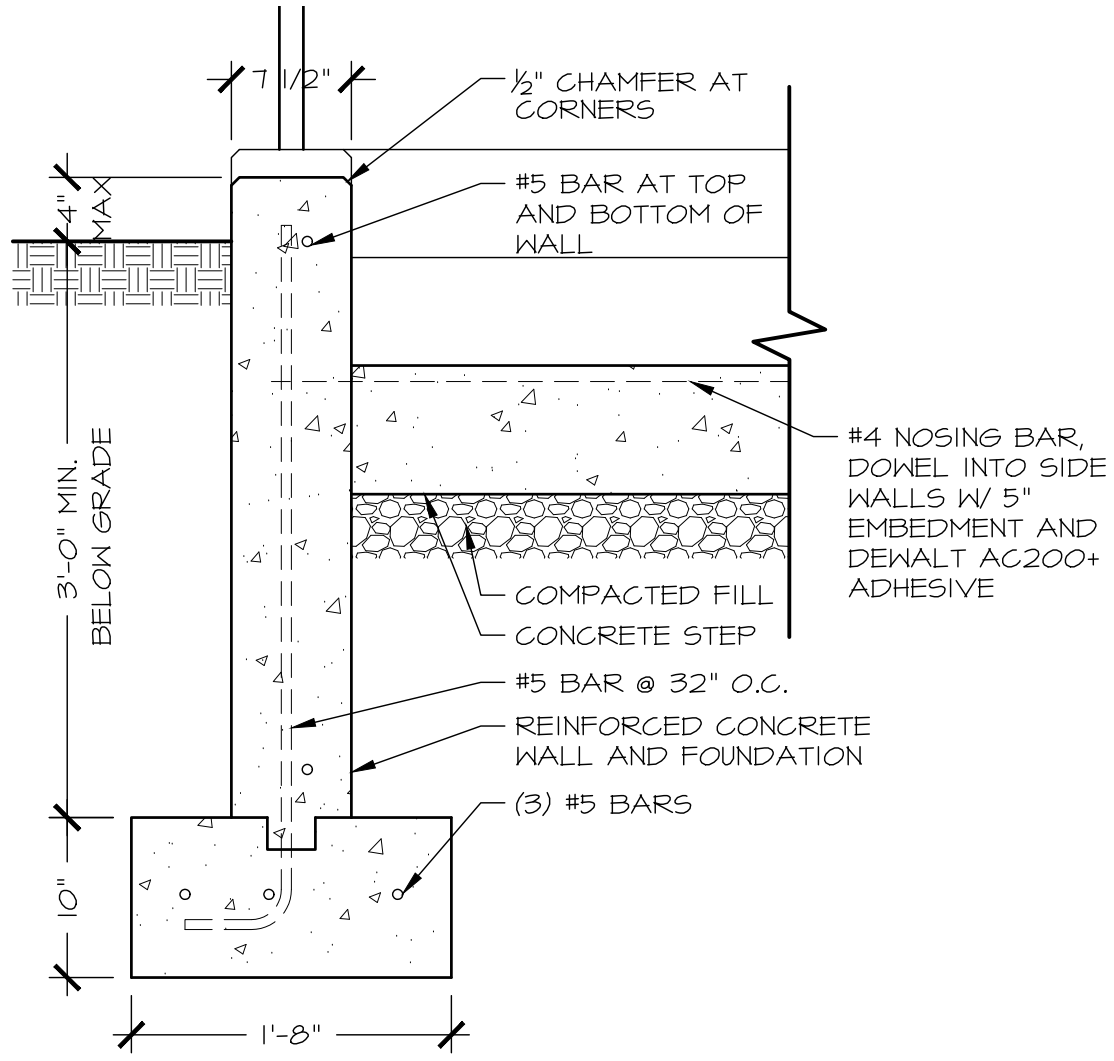
PHASE 2 - STUDENT SERVICE CENTER and RENOVATION of
 COLLEGE HALL for MONTCLAIR STATE UNIVERSITY
 SOUTHEAST SITE STAIRS - LONGITUDINAL SECTION

SCALE: 1/2" = 1'-0"

DRAWN BY: JK

DATE: 6/10/20

CSK-99B



SCALE: 1" = 1'-0"

DRAWN BY: JK

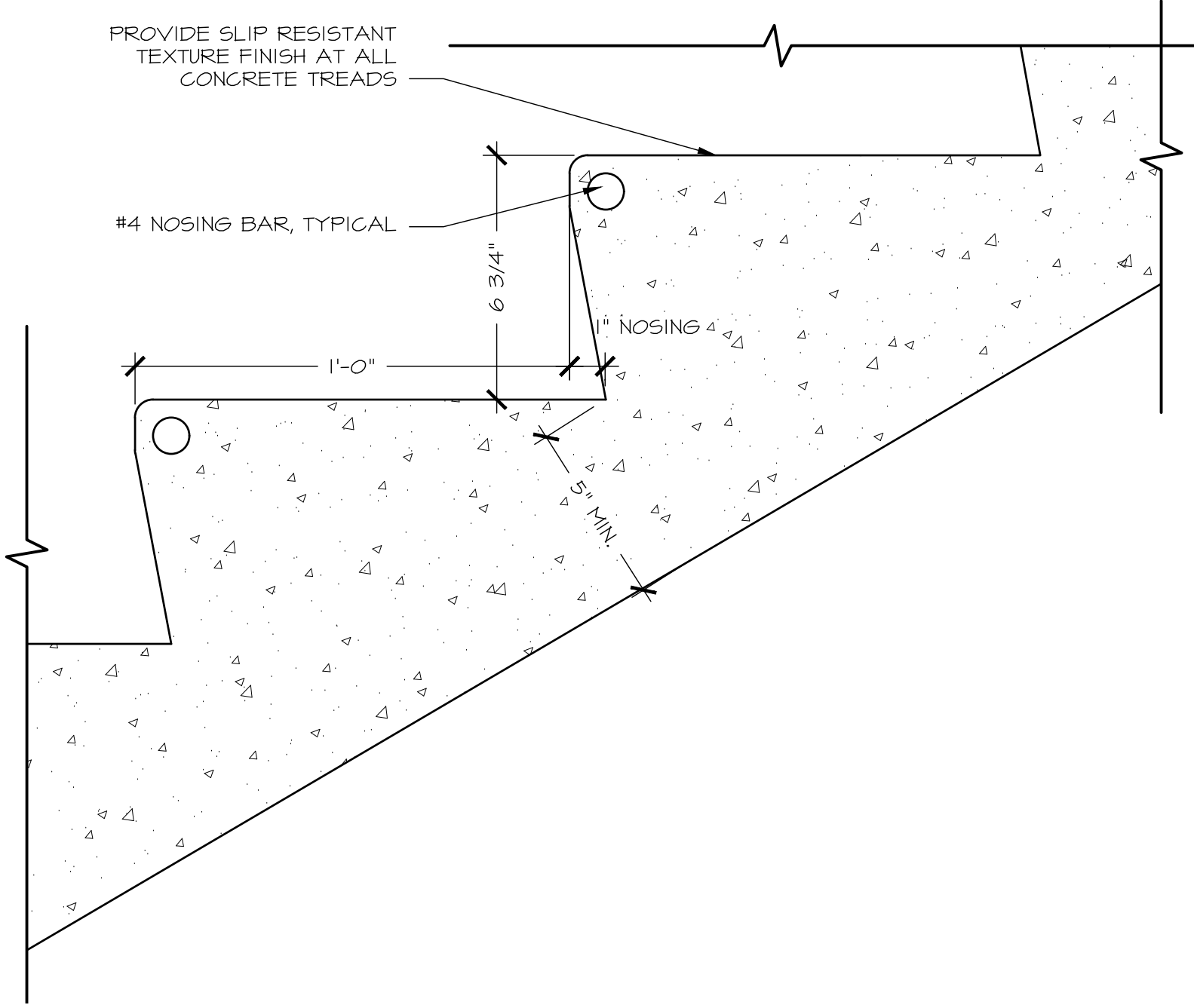
DATE: 6/10/20

821 ALEXANDER ROAD - SUITE 115
 PRINCETON, NEW JERSEY 08540
 609-452-1070 - HMR-ARCHITECTS.COM

HMRARCHITECTS

PHASE 2 - STUDENT SERVICE CENTER and RENOVATION of
 COLLEGE HALL for MONTCLAIR STATE UNIVERSITY
 SOUTHEAST SITE STAIRS - TRANSVERSE SECTION

CSK-99C



PROVIDE SLIP RESISTANT
TEXTURE FINISH AT ALL
CONCRETE TREADS

#4 NOSING BAR, TYPICAL

6 3/4"

1'-0"

1" NOSING

5" MIN

SCALE: 3" = 1'-0"

DRAWN BY: JK

DATE: 6/10/20

821 ALEXANDER ROAD - SUITE 115
PRINCETON, NEW JERSEY 08540
609-452-1070 - HMR-ARCHITECTS.COM

HMRARCHITECTS

PHASE 2 - STUDENT SERVICE CENTER and RENOVATION of
COLLEGE HALL for MONTCLAIR STATE UNIVERSITY

SOUTHEAST SITE STAIRS - STAIR PROFILE

CSK-99D