

An aerial photograph of the Montclair State University campus. In the foreground, a large green lawn is bisected by a wide, light-colored paved walkway. To the right, a prominent white building with a red-tiled roof and large arched windows is visible. The background shows a dense forest of trees with autumn foliage, and beyond that, a city skyline under a cloudy sky. The text "ELEVATE YOUR FUTURE" is overlaid in large white letters on the left side of the image.

ELEVATE YOUR FUTURE

MONTCLAIR
STATE UNIVERSITY

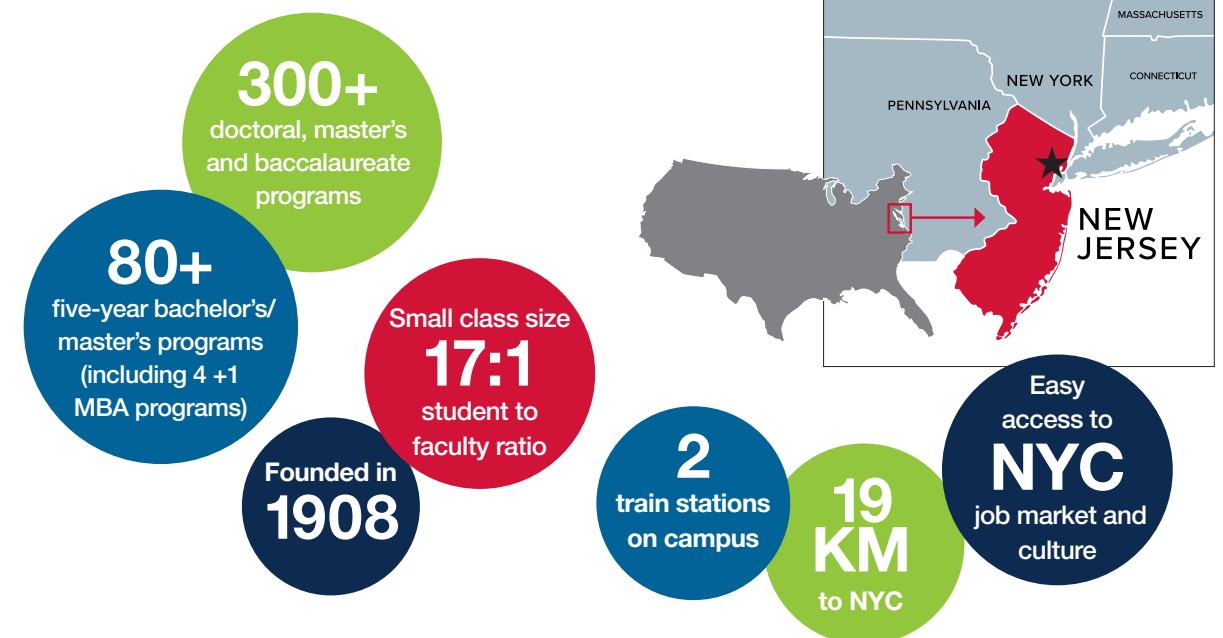
CREATING THE WORLD YOU IMAGINE

MONTCLAIR STATE UNIVERSITY has spent more than a century fostering discovery, innovation, and exploration through its 13 colleges and schools, 300 doctoral, master's, and baccalaureate programs, 1,800 dedicated faculty, and 23,500 ambitious student scholars. Designated as a Carnegie Research Doctoral University, Montclair is committed to addressing the world's most pressing challenges.

Situated in a vibrant suburban township just 19 km from New York City, the university combines a welcoming small-town atmosphere with the opportunities and excitement of big-city access.

WHY MONTCLAIR STATE UNIVERSITY?

Montclair State University helps you gain a competitive edge before you even enter the job market.



THE CITY AT YOUR FOOTSTEPS

A world-class view photographed from
the campus of Montclair State University!
One of the world's greatest cities is right outside
your classroom, just 19 KM from campus.

Internships and Job Placements

Barclays Services Corp
Bloomberg
Citi Bank
Comcast
Deloitte
Goldman Sachs
H&M
HelloFresh
INFOSYS Limited
Johnson & Johnson
KPMG
Oracle Cloud
Samsung
SDG Group
Tata Consultancy Services
Tesla
UBS
Walmart Global Tech
Yahoo Inc

CAREER OUTCOMES

Montclair State University understands the importance of helping students develop meaningful careers after graduation, recognizing that their success extends beyond academic achievements. We provide a comprehensive education experience that combines rigorous academic programs with opportunities for hands-on learning, internships, and career development support.

By fostering a culture of leadership, critical thinking, and global awareness, we prepare students to become engaged citizens who are equipped to tackle complex challenges and contribute to their communities. Our focus on collaboration, ethical decision-making, and cultural competence ensures that graduates are not only ready to succeed in their careers, but also to lead with purpose anywhere in the world.

HIGHLIGHTING SUCCESS:



CHIRAG
from India

Current Job Title: Real Estate Analyst
Company: Capodagli Property Company

“As a graduate of the Master of Science in Business Analytics program at Montclair State University, I gained a solid foundation in data analysis and technical skills, particularly in Python. The support of Montclair’s diverse and inclusive environment equipped me with the expertise necessary for my current role as a Real Estate Analyst. I now analyze real estate portfolios valued at \$40-50 million at Capodagli Property Company, utilizing my skills to assess market trends, forecast property values, and make informed, data-driven investment decisions. The comprehensive education I received, along with the guidance of dedicated professors, has played a pivotal role in my success in the dynamic field of real estate analytics, and I’m deeply grateful for the opportunities it has opened for me”.

WHAT OUR STUDENTS SAY



ANGELA
from Singapore

BFA Product Design

“Montclair allowed me to venture outside my comfort zone and exposed me to a campus community that places importance on diversity and inclusivity, which taught me how to appreciate and celebrate cultural differences”.



MUSTAFA
from Pakistan

MS in Data Science

“The combination of an accessible location and reasonable costs enhances the overall value proposition. The university’s emphasis on a supportive learning environment with professors dedicated to guiding students through their academic journey adds another layer of appeal”.



KARINA
from Brazil

MS Nutrition and Food Science

“Montclair offered me valuable hands-on experiences through internships in Colorado and New Jersey”.



PETER
from Taiwan

PhD Environmental Science and Management

“The university boasts a remarkably diverse student body, creating an inclusive environment where individuals from various backgrounds and experiences are warmly welcomed into the campus community”.



ALERO
from Nigeria

MS in Business Analytics

“One thing that truly stands out for me is the exceptional communication system. Whenever I need more information or have questions, there’s always someone ready to answer and follow up”.

Hundreds of
job opportunities
available across
the NYC region
and beyond

Career Services
staff embedded
in each college
for support

84%
of international
students are employed
on OPT within
2 months of
graduation

A COMMITMENT TO AFFORDABILITY

Montclair State University knows your value. And you know ours, because our reputation for delivering an exceptional, affordable education precedes us. A Montclair education affords the very best return on your investment. As one of the most affordable universities in New Jersey, we make it easier for you and your family to make a smart and practical financial investment.



FINANCING YOUR EDUCATION

Undergraduate Freshman Scholarships

Undergraduate freshmen applicants are automatically reviewed for partial merit-based Presidential Scholarships (no separate application required). Scholarships are highly competitive and based on the academic profile.

Application deadline:

- March 1 for fall
- Spring applicants should apply early for maximum consideration

Undergraduate Talent-Based Performing Arts Awards

Students admitted to select performing arts programs in Dance, Musical Theatre, Music, and Theatre may be awarded a talent-based scholarship by the faculty based on the strength of their audition.

Graduate Assistantships

The Graduate School offers a very limited number of highly competitive assistantships for degree-seeking graduate students who are interested in an opportunity to gain an academic experience that directly complements the student's degree program curriculum. Assistantships will offer opportunities to work with faculty on research, assist faculty with instructional support, and/or be related to the student's clinical or field work.

Graduate assistantship application process:

Students who are admitted to degree-granting programs will be sent a link to an online Graduate Assistantship Application Form. All applicants must undergo a review and approval process which involves initial review by the academic department, interview of potential candidates (at the department's discretion), recommendation for a position by the department, and approval by both The Graduate School and the Dean's Office of the college that houses the recommending academic department.

As assistantship opportunities are limited and highly competitive – graduate students should be prepared to self-fund their studies.

Scholarship Universe

This tool will provide students with a personalized list of external scholarship opportunities. Students can apply directly through the portal.



WE ARE RED HAWKS

CAMPUS LIFE

Red Hawks excel both in and outside of the classroom with opportunities to find their passions and fuel their interests – from athletics and the arts to social activism and research, you will find your niche at Montclair.

Here are some ways to make the most of your time at Montclair:

- Cheer on or join our 50+ NCAA Division III, club, or intramural sports teams
- Join the best student radio station in the country
- Audition for roles in film projects or dance and theater groups
- Join the campus newspaper and/or news lab
- Watch professional performances at the Kasser Theater
- Check out art exhibitions at the University Galleries
- Volunteer for National Day of Service, Alternative Spring Break, or ongoing community service opportunities
- Join one of the 40+ Greek Life organizations
- Make use of our multi-faith prayer and meditation room with access to ablution stations
- Stay connected through Commuter Life
- Join one of our 120+ student clubs catering to every interest
- Take advantage of the four on-campus bus and rail stations with easy access to New York City
- Join our 5,300+ residential community by living in one of our 10 on-campus residence halls
- Exercise at our Student Recreation Center or skate in our Ice Arena
- Participate in our annual Montclair Starts Up
- Enjoy our global food options catering to a wide variety of dietary preferences

Get active in causes you care about through our Office of Student Belonging that houses the following:

- Queer Community Program Center
- Cultural Communities Program
- Advocacy and Empowerment Program
- Faith and Belief Community Program

CHOOSE YOUR PURPOSE



ACCOLADES

U.S. News & World Report 2025 Best Colleges ranks Montclair

#81 in the country
(among national public universities),
#12 in the nation in social mobility.

The Wall Street Journal/College Pulse 2024 Best Colleges in the U.S. ranks Montclair

#4 in New Jersey,
#37 among public universities, and
#104 overall.

Money rated Montclair among the nation's
"Best Colleges in America" in 2024.

Forbes names Montclair on it's
"America's Top Colleges" List in 2025.

Explore our programs using our innovative search tool at montclair.edu/academics.

SCHOOLS AND COLLEGES

- College of the Arts
- College for Community Health
- College for Education and Engaged Learning
- College of Humanities and Social Sciences
- College of Science and Mathematics
- Feliciano School of Business
- John J. Cali School of Music
- School of Communication and Media
- School of Computing
- School of Nursing
- The Graduate School
- University College
- Bloomfield College of Montclair State University



Application Checklist for Undergraduate Students

All Undergraduate Students:

- Online application
 - Freshmen - commonapp.org or montclair.edu/apply
 - Transfers - montclair.edu/apply
- \$65 nonrefundable application fee
- English proficiency score, if required
 - TOEFL IBT - 70
 - IELTS - 6.0
 - Duolingo - 95
 - PTE-A - 48
 - ITEP - 3.7
 - SAT - 480 EBRW
 - ACT - 22 English
- Some College of the Arts programs require an interview, audition or portfolio review.

Undergraduate Freshmen:

- Secondary school transcript including any national/board exam scores
- Essay/personal statement
- Letter of recommendation optional for most programs, but strongly encouraged - 2 LORs required for select performing arts programs
- Resume/extracurricular activities list (optional for most majors but required for select performing arts programs)
- SAT/ACT scores (optional)

Undergraduate Transfers:

- Transcripts of all colleges/universities previously attended
 - Secondary school transcripts required if less than 30 university level credits completed
- A transcript evaluation by a NACES approved company (naces.org/members)
- Essay/personal statement - (optional for most programs, but required for select arts programs)
- Resume/extracurricular activities list (optional for most majors- required for select performing arts programs)

APPLICATION DEADLINES:

Undergraduate Fall (August) Applicants:

Early Action (freshmen only): December 1

Nursing (freshmen only): February 1

Preferred: March 1 (freshmen)/April 15 (transfer)

Scholarship (freshmen only): March 1

Final: June 1

Undergraduate Spring (January) Applicants:

Final: November 1



MORE INFORMATION:
montclair.edu/global/how-to-apply

Undergraduate Programs of Study

A

- Accounting - Major
- Acting - Concentration
- Advertising - Major
- African American Studies - Minor
- American Identities and Cultures - Minor
- American Sign Language - Minor
- Ancient Mediterranean Civilizations - Minor
- Animation and Visual Effects - Major
- Anthropology - Major, Minor
- Applied Mathematics and Statistics - Major
- Applied Nutrition and Wellness - Concentration
- Arabic - Major, Minor, Concentration
- Archaeology - Minor
- Asian Languages - Minor
- Asian Languages and Cultures - Major
- Asian Studies - Minor
- Asset Management - Concentration
- Astronomy- Concentration

B

- Biochemistry - Major
- Biology - Major, Minor
- Business - Minor, Concentration
- Business Administration - Major
- Business Analytics - Major, Minor
- Business Relationships and Professional Selling - Minor

C

- Chemistry - Major, Minor
- Child Advocacy and Policy - Major, Minor
- Chinese - Minor, Concentration
- Classics - Major, Minor
- Cognitive Science - Minor
- Communication and Media Studies - Major
- Communication Studies - Minor
- Community Development - Concentration
- Community Health Education - Concentration
- Comparative Mythology and Literature - Concentration
- Composition - Concentration
- Computer Science - Major, Minor
- Creative Writing - Minor, Concentration
- Criminal Justice - Minor, Concentration

D

- Dance - Major
- Data Sciences - Major, Minor
- Design, Technology and Management - Concentration
- Dietetics - Concentration

E

- Earth and Environmental Science - Major, Minor
- Economics - Major, Minor
- English - Major, Minor
- Entrepreneurship - Minor, Concentration
- Environmental Justice - Minor
- Environmental Science - Concentration
- Exercise Science - Major

* Additional programs of study are available for U.S. citizens or permanent residents. Please see the website for a complete list of programs.

F

- Family Science and Human Development - Major, Minor
- Families, Children and School Settings - Concentration
- Family Services - Concentration
- Fashion Design - Minor
- Fashion Design and Merchandising - Major
- Fashion Merchandising - Minor
- Film and Television - Major
- Film - Minor
- Film Studies - Concentration
- Finance - Minor, Concentration
- Food Science - Concentration
- Food Systems - Concentration
- French - Major, Minor, Concentration
- French Civilization - Concentration

G

- Gay, Lesbian, Bisexual, Transgender, Queer Studies - Minor
- Gender, Sexuality, and Women's Studies - Major, Minor
- Geographic Information Science - Minor
- Geographic, Environmental and Urban Studies - Major
- German - Major, Minor, Concentration
- Gerontology - Minor
- Global Security and Diplomacy - Minor
- Greek - Minor

H

- Health and Wellness - Concentration
- Health Systems Administration and Policy - Concentration
- History - Major, Minor
- Hospitality, Sports, Events, and Tourism - Major
- Humanities - Major
- Human Values and Problem Solving - Concentration

I

- Illustration - Major
- Information Technology - Major
- Interdisciplinary Studies - Major
- International Business - Minor, Concentration
- International Justice - Concentration
- International Studies - Minor
- Italian - Major, Minor, Concentration

J

- Japanese - Minor, Concentration
- Jazz Studies - Concentration
- Jewish American Studies - Minor
- Journalism and Digital Media - Major
- Journalism - Minor
- Jurisprudence, Law and Society - Major
- Justice and Families - Minor
- Justice Studies - Major

K

- Korean - Minor, Concentration

L

- Language, Business and Culture - Major
- Language Engineering - Concentration
- Latin - Major, Minor
- Latin American and Latino Studies - Minor
- Leadership Development Through Civic Engagement - Minor
- Liberal Studies - Major
- Linguistics - Major, Minor

M

- Management - Concentration
- Management Information Systems - Concentration
- Marine Biology and Coastal Sciences - Major

- Marketing - Concentration
- Mathematics - Major, Minor
- Medical Humanities - Major
- Molecular Biology - Major
- Music - Major
- Music Therapy - Major
- Musical Theatre - Major, Minor
- Myth Studies - Minor

N

- Native American and Indigenous Studies - Minor
- Neuroscience - Minor
- Nursing (BSN) - Major
- Nutrition and Food Science - Major, Minor

P

- Performance - Concentration
- Pharm-D - Concentration
- Philosophy - Major, Minor
- Physics - Major, Minor
- Policy Studies - Major, Minor
- Political Communication - Minor
- Political Science - Major, Minor
- Portuguese Studies - Minor
- Pre-Law Studies - Minor
- Pre-Medical - Concentration
- Psychology - Major, Minor
- Public Administration - Minor
- Public and Digital History - Minor, Concentration
- Public and Professional Writing - Major, Minor
- Public Health - Major, Minor

R

- Real Estate - Concentration
- Recording Arts and Production - Major
- Religious Studies - Minor
- Russian - Minor, Concentration

S

- School and Community Settings - Concentration
- Social Justice: Gender, Race, and Queerness - Minor
- Social Media and Public Relations - Major
- Social Work - Minor
- Sociology - Major, Minor
- Spanish - Major, Minor, Concentration
- Speech Language Pathology and Audiology - Minor
- Sports Coaching - Minor
- Sports Communication - Major
- Sports Nutrition - Minor
- Strategic Human Capital Management - Concentration
- Studio Teaching - Concentration
- Sustainability Science - Major, Minor

T

- Technology, Self, and Society - Concentration
- Theatre - Major, Minor
- Theatre Studies - Major
- Translation - Concentration (French)
- Translation - Concentration (Spanish)

U

- Undeclared - Major
- Urban Humanities - Major, Minor
- Urban Studies - Minor

V

- Visual Arts - Major, Minor
- Visual Communication Design - Major

Application Checklist for Graduate Students

- All Graduate Students:**
- Online application - montclair.edu/apply
 - \$60 nonrefundable application fee
 - English proficiency score, if required
 - TOEFL IBT - 83
 - IELTS - 6.5
 - Duolingo - 105
 - PTE-A - 53
 - ITEP - 4.5
 - Transcripts of every post-secondary institution attended
 - A transcript evaluation by a NACES approved company (naces.org/members)
 - A limited number of free transcript evaluations are available. Refer to the link at the QR code below for additional information.
 - Letter(s) of recommendation – 1-3 LORs as required by your program
 - GRE/GMAT scores - if required by your program (not required in most cases)
 - Supplemental materials – resume, personal statement, essay, portfolio, interview, audition as required by your program

APPLICATION DEADLINES:
Graduate Fall (August) Applicants:
Final: June 1*

Graduate Spring (January) Applicants:
Final: November 1*

**Some programs have earlier deadlines.
Refer to the website for additional information.*



MORE INFORMATION:
montclair.edu/global/how-to-apply/graduate-students

Graduate Programs of Study

M = Masters D = Doctoral C = Certificate/Diploma

A
Accounting - **M**
Applied Linguistics - **M**
Applied Mathematics - **M**
Audiology - **D**

B
Biology - **M**
Biology (Ecology and Evolution Concentration) - **M**
Biology (Physiology Concentration) - **M**
Business Administration (MBA) - **M**
Business Analytics - **M**

C
Chemistry - **M**
Chemistry (Biochemistry Concentration) - **M**
Clinical Psychology - **D**
Clinical Psychology (Child/Adolescent Psychology Concentration) - **M**
Clinical Psychology (Forensic Psychology Concentration) - **M**
Computational Linguistics - **M**
Computer Science - **M**
Counseling - **D**
Counseling (Addictions Counseling Concentration) - **M**
Counseling (Clinical Mental Health Concentration) - **M**
Counseling (Student Affairs/Counseling in Higher Ed Concentration) - **M**
Cybersecurity - **M**

D
Data Science - **M**
Digital Marketing Analytics - **M**
Dual Degree: Business Analytics (MS) and Business Administration (MBA) - **M**
Dual Degree: Public Health (MPH - Health and Systems Administration and Policy) and Business Administration (MBA) - **M**

E
Earth and Environmental Science - **M**
Educational Leadership - **M**
English - **M**
Environmental Science and Management - **D**

F
Family Science and Human Development - **D**
French (French Studies Concentration) - **M**
French (Professional French Translation Concentration) - **M**

H
Higher Education - **M**
Human Resource Analytics - **M**

I
Industrial and Organizational Psychology - **M, D**
Information Technology - **M**

K
Kinesiology (Exercise Science Concentration) - **M**
Kinesiology (Sports Administration Concentration) - **M**

L
Law and Governance - **M**
Law and Governance
(Conflict Management and Peace Studies Concentration) - **M**
Law and Governance (Governance, Compliance, and Regulation Concentration) - **M**
Law and Governance (Intellectual Property Concentration) - **M**
Law and Governance (Legal Management Concentration) - **M**

M
Marine Biology and Coastal Sciences - **M**
Mathematics - **M**
Mathematics (Mathematics Education Concentration) - **M**
Mathematics Education - **D**
Molecular Biology - **M**
Music (Music Composition Concentration) - **M**
Music (Music Therapy Concentration) - **M**
Music - Performance (Collaborative Keyboard Concentration) - **M**
Music - Performance (Conducting Concentration) - **M**
Music - Performance (Instrumental Concentration) - **M**
Music - Performance (Jazz Studies Concentration) - **M**
Music - Performance (Keyboard Concentration) - **M**
Music - Performance (Vocal Concentration) - **M**
Music - Performance (Woodwind Doubling Concentration) - **M**
Music - Artist's Diploma Certificate - **C**
Music - Performer's Certificate - **C**

N
Nutrition and Food Science - **M**

P
Pharmaceutical Biochemistry - **M**
Pre-Dietetics - **C**
Psychological Sciences - **M**
Public Health (Health Education, Promotion, and Advocacy Concentration) - **M**
Public Health (Health Systems Administration and Policy Concentration) - **M**

S
Social Research and Data Analysis - **M**
Social Work (Children, Youth and Families Concentration) - **M**
Social Work - Advanced Standing (Children, Youth and Families Concentration) - **M**
Spanish - **M**
Special Education - **M**
Speech-Language Pathology - **M**
Sustainability Science - **M**
Sustainability Science (Sustainability Leadership Concentration) - **M**

T
Teacher Education and Teacher Development - **D**
Theatre (Theatre Studies Concentration) - **M**

* Additional programs of study are available for U.S. citizens, permanent residents, certain visa categories other than F or J, and/or students wishing to study online. Please see the website for a complete list of programs.

TAKE THE NEXT STEP



There's no better time than right now to apply to Montclair.
It's easy to do! Apply online: montclair.edu/apply

WAYS TO CONNECT

Graduate Virtual Events

Take advantage of our robust schedule of virtual events with Montclair faculty and staff. Gain a better understanding of the variety of programs we offer - or dive into the specifics of a program that interests you.

Register now: montclair.edu/graduate/graduate-admissions-events/



Virtual Tour

Soar like a Red Hawk and immerse yourself in Montclair's beautiful campus through a Video Viewbook and Interactive Campus Map!



Prospective Student Webinars

Learn more about Montclair and the process of applying for admission by attending one of our virtual information sessions.

All attendees receive an application fee waiver!

Register now: montclair.edu/global/prospective-international-student-events

Meet Our Current Students

Chat with some current Montclair State University international students to learn more about academic and student life. They will help you envision exactly what your life would be like in Red Hawk Country!

Application Information



How to Apply:
montclair.edu/global/how-to-apply



Apply Now:
montclair.edu/apply



Attend an Information Session:
montclair.edu/global/prospective-international-student-events

A photograph of the Montclair State University Hawk mascot, a brown and yellow bird wearing a white jersey with "MONTCLAIR STATE UNIVERSITY" printed on it. The mascot is standing in front of a large, dark bronze eagle statue with its wings spread. In the background, there is a white building with arched windows and a red-tiled roof, and some greenery. The sky is overcast.

GO RED HAWKS

CONTACT US

montclair.edu/global / Call: +1-973-655-6862 / Email: global@montclair.edu

Social: montclair.edu/social / Instagram: [@montclair_global](https://www.instagram.com/montclair_global)

MONTCLAIR
STATE UNIVERSITY