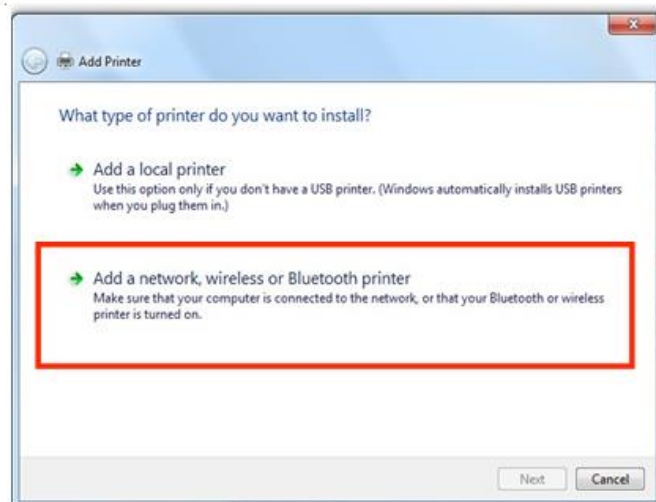


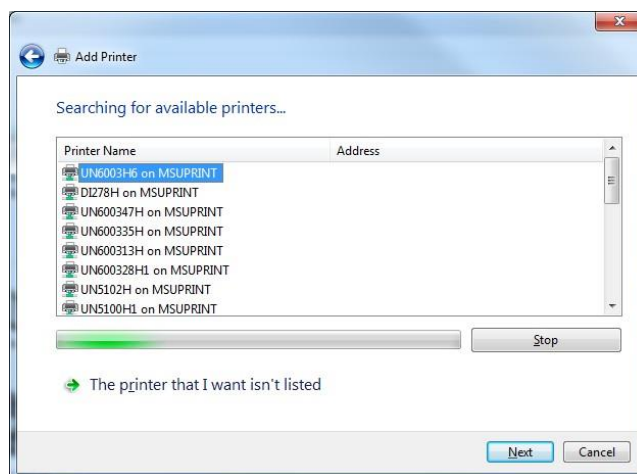
Active Directory Services - Windows 7

Installing a Shared Printer

- 1) Click on **Start**
- 2) Click on **Devices and Printers**
- 3) Click **Add a printer**
- 4) Click **Add a network, wireless or Bluetooth printer**
- 5) Click **Next**



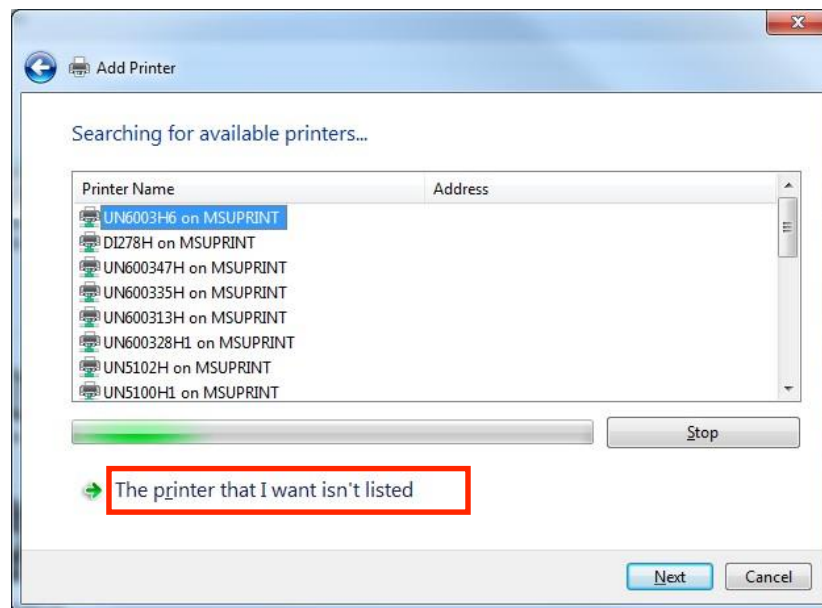
- 6) Select the printer from the list
- 7) Click **Next**



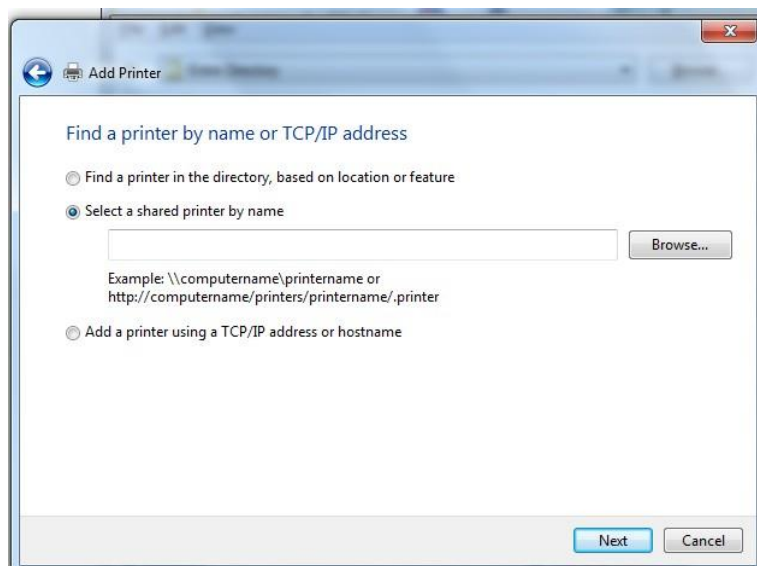
- 8) Click **Next**
- 9) Click **Finish**

If the printer you want to install is not listed, follow steps below:

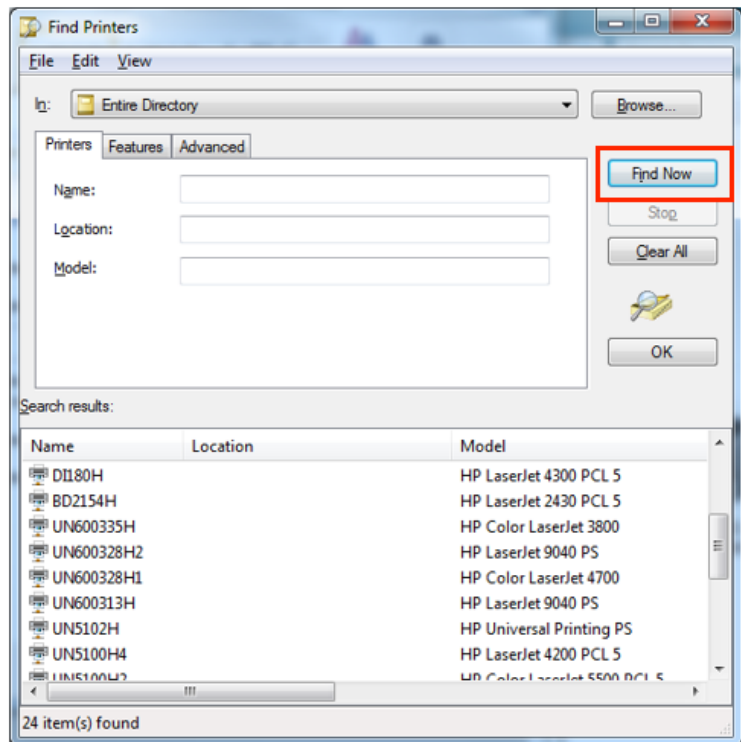
- 1) Click on **The printer that I want isn't listed**
- 2) Click **Next**



- 3) Select **Find a printer in the directory, based on location or feature**
- 4) Click **Next**



5) Click **Find Now**



- 6) Click on your printer from the list
- 7) Click **OK**
- 8) Click **Next**
- 9) Click **Finish**