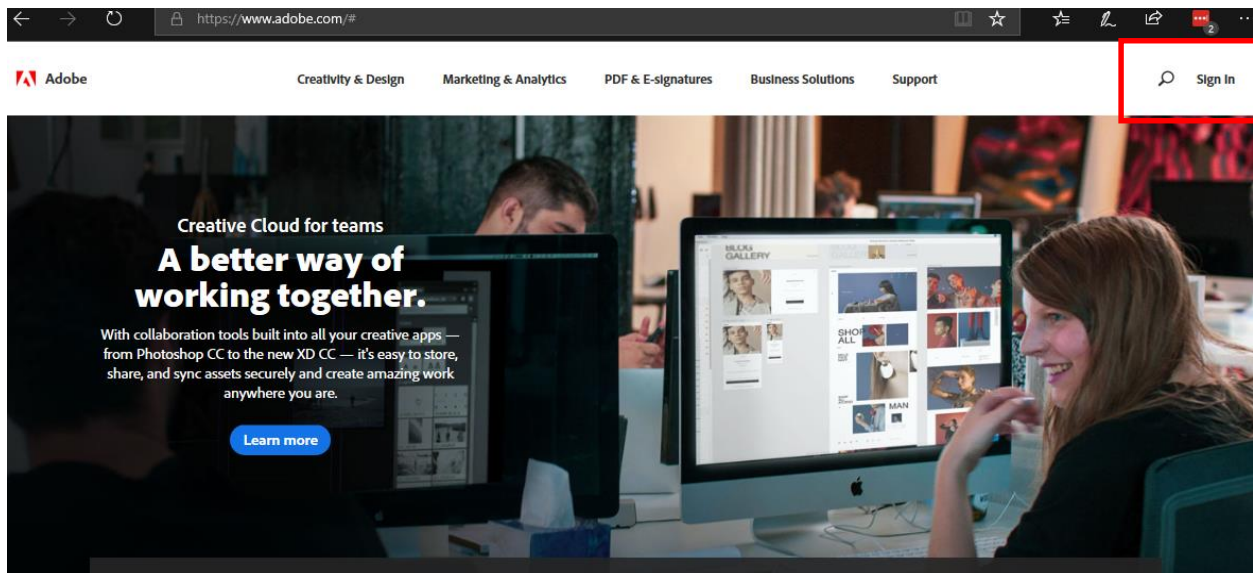


# MONTCLAIR STATE UNIVERSITY

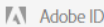
## Using Adobe in the Cloud

- Open a browser and navigate to the [Adobe website](http://adobe.com) (<http://adobe.com>)
- Click **Sign In**



- Click **Sign in with an Enterprise ID**

Trouble signing in?  
Check out this [help page](#).



## Sign in

☒ Stay signed in [Forgot password?](#)

Not a member yet? [Get an Adobe ID](#)

Want to use your company or school account?

- Enter your email address in the email address/domain name field (for example: netid@mail.montclair.edu) and password
- Click **Sign in with an Enterprise ID**

Trouble signing in?  
Check out this [help page](#).

Enterprise ID

## Sign in

Need help with Enterprise ID? [Learn more](#).

Email address or domain name

Password

☒ Stay signed in [Forgot password?](#)

**Sign In with an Enterprise ID**

[Sign in with an Adobe ID](#)

This will redirect you to the NEST Login page.

1. Enter your netid credentials to login
2. Click **Sign In**

MONTCLAIR STATE UNIVERSITY

# nest

Newly accepted applicants who have not claimed their NetID: enter your CVID (the eight-digit number without the letter "M") and PIN below.

Former students who would like to make an official transcript request: login using your College Wide ID (CVID) and PIN. [More Information](#)

## Login

User Name What's This?

netid

Password What's This?

\*\*\*\*\*

**Sign In**

To manage your University NetID account, please visit the: [University NetID Account Form](#)

[Forgot Your PIN?](#)

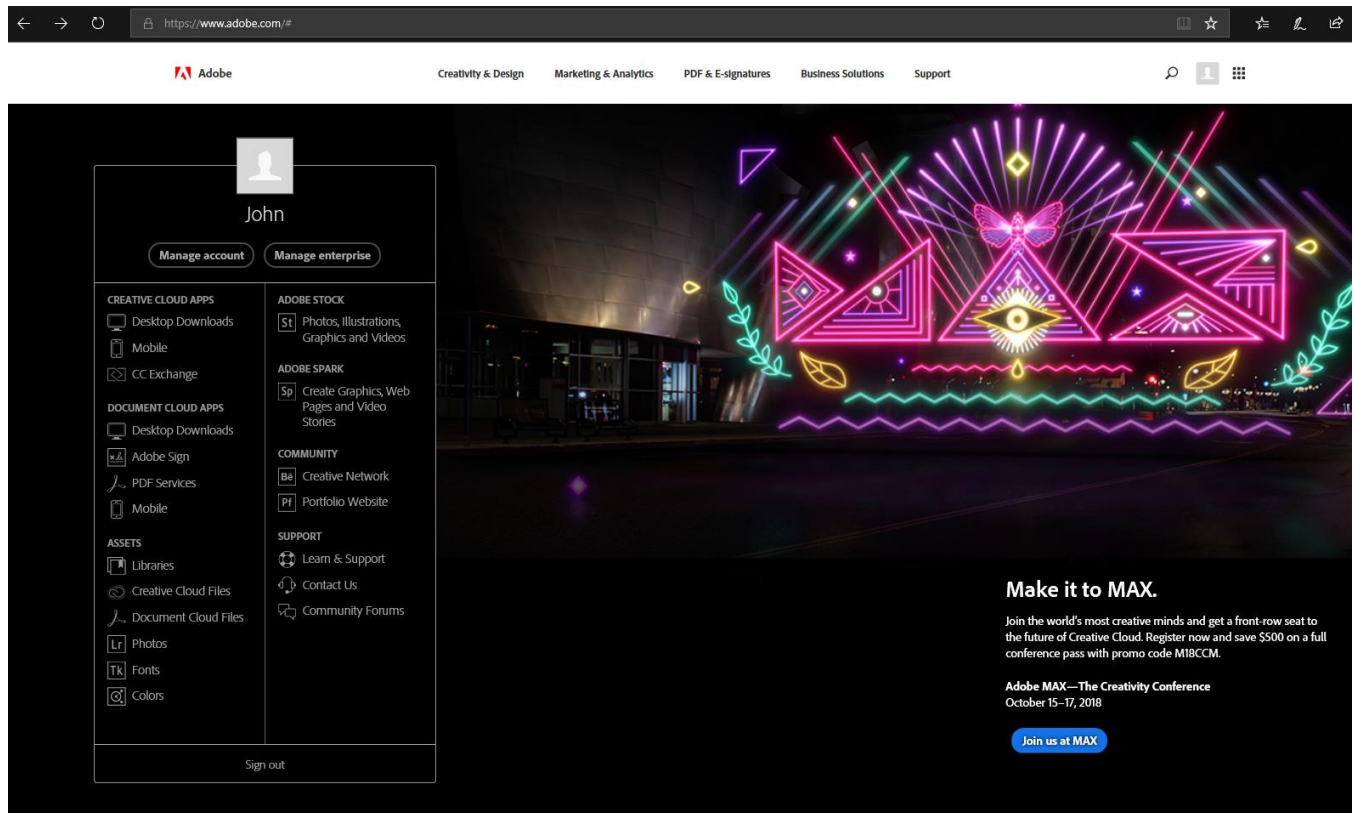
Questions or concerns? Please email [nest@mail.montclair.edu](mailto:nest@mail.montclair.edu) or contact the IT Service Desk at 973-655-7971.

Note: The web page can not be bookmarked.

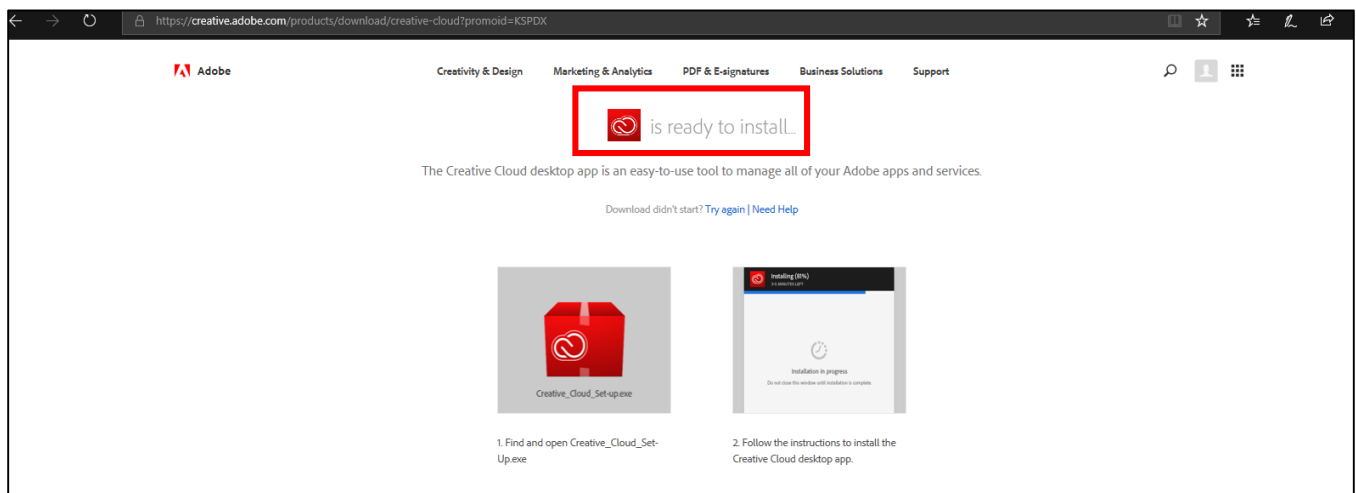
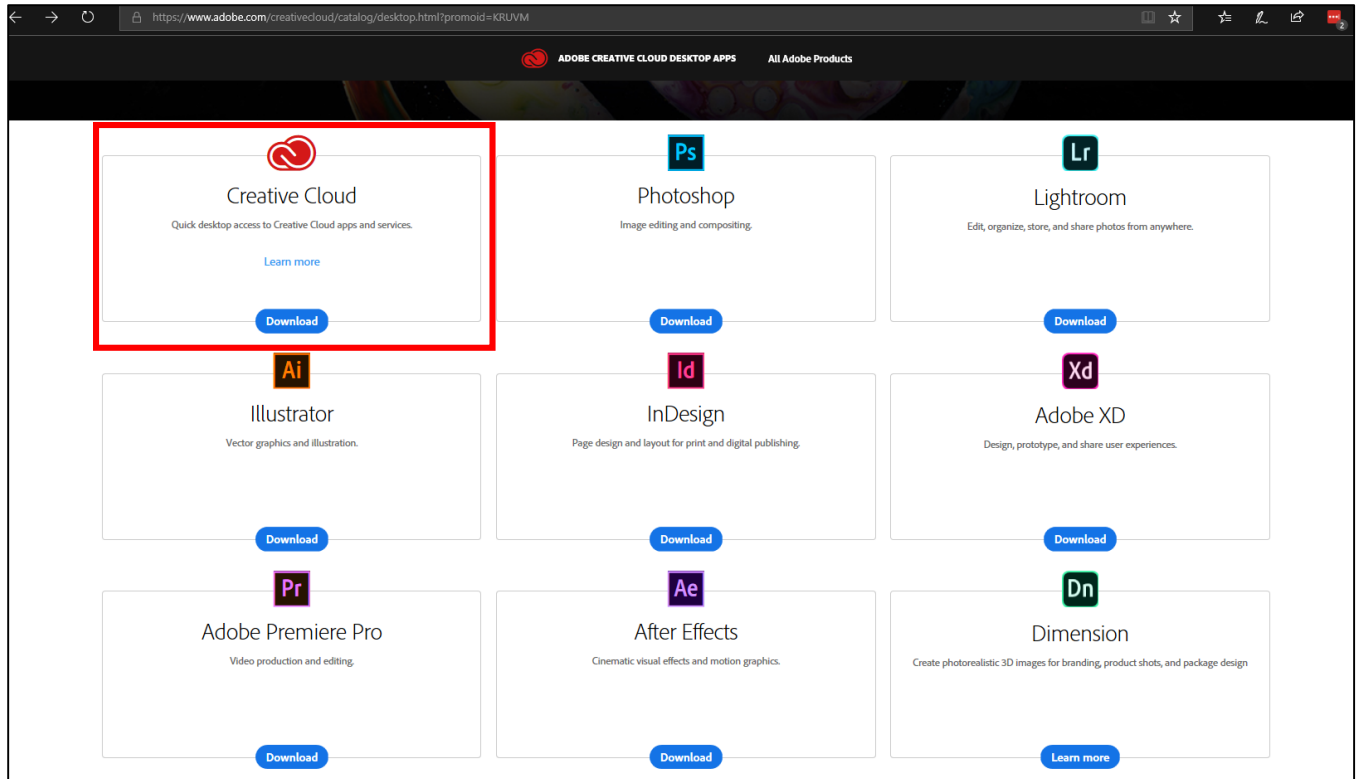
For best user experience with NEST use one of the following browsers: IE, Firefox or Safari (Chrome and Microsoft Edge are not supported).

Upon successful login, you will be redirected back to adobe.com. Here you will be presented with all the things available with our license, including the ability to download programs for installation on devices other than your primary or other managed MSU machines.

If you select **Desktop Downloads** under **Creative Cloud Apps**, you will be presented with the applications available for download.



In the following example, **Creative Cloud Apps** was selected which directs you to the following page for the applications. Here we selected **Creative Cloud** which prompts us for the download of the application.



In this example, **Document Cloud Apps** was selected which directs you to the download page for the Acrobat application.

