

MONTCLAIR STATE UNIVERSITY

Montclair, NJ 07043

ADDENDUM NO. 1

Request for Proposal # 1586 Bohn – Community Kitchen

Date of Original Bidding Documents: December 7, 2023
Date of Addendum No. 1: January 4, 2024
Bid Opening Date: January 17, 2024 at 11:00 A.M.

INTENT: This Addendum forms a part of the Contract Documents and modifies the Original Bidding Documents and Prior Addenda, if any, as identified above. Unless specifically noted or specified hereinafter, all work shall comply with the applicable provisions of the Contract Documents.

It is the sole responsibility of the Bidder to be knowledgeable of all of the additions, deletions, clarifications and modifications to the RFP relative to this RFP as set forth in all addenda. Bidders should acknowledge receipt of this Addendum in the space provided on the Bid Form. Failure to do so may subject Bidder to disqualification.

I. ANSWERS TO QUESTIONS:

#	Question (Bolded) and Answer
1	For Door #200 going into the Student Kitchen, it lists Hardware Set #3 per the Drawing. The contractor can't find a description of this Hardware. 1-1/2" BUTT HINGES (BOMMER), 1 OVERHEAD CLOSER (LCN4000), 1 PASSAGE LOCKSET (OR OFFICE) (SARGENT), 1 KICK PLATE (INTERIOR SIDE) 3 SILENCERS (ROCKWOOD OR HAGAR). Montclair State University will supply the door-locking hardware for the door.
2	The contractor is looking for page A-901, which tells us to refer to this page for the finish schedule. A-901 is a type-o. The Finish Schedule is located on Sheet A-100
3	The contractor is looking to confirm that no exterior work or painting is needed. Exterior painting may be necessary following saw-cutting for ductwork opening. General Contractor should include the cost of patching and painting work areas.

II. ADDITIONS, DELETIONS, CLARIFICATIONS AND MODIFICATIONS TO THE RFP

#	Additions, Deletions, Clarifications and Modifications
1	<p>On page M-100, it shows fresh air ducting with 6" branch lines; where those branch lines end, it shows that it converts to a flex, but it does not show what size flex it is, and it does not show what vent it goes to.</p> <p>Refer to the attached revised Drawing Sheet M-100. Ceiling Cassette Units have been updated to include ventilation kits and flex ducts have been labeled as a 6" round size with any required transitions as needed to connect to the unit ventilation kit.</p>
2	<p>Attached to this Addendum is a drawing that shows the path from the loading dock to the space by way of the stairs instead of the elevator. If this path is used during any part of the construction, the contractor must provide protection and coordinate with Res Life as the path goes by rooms that students could occupy.</p>

Please acknowledge receipt of this Addendum No. 1 via the following email address: bielickad@montclair.edu

Company Name (please print)

Date

Signature

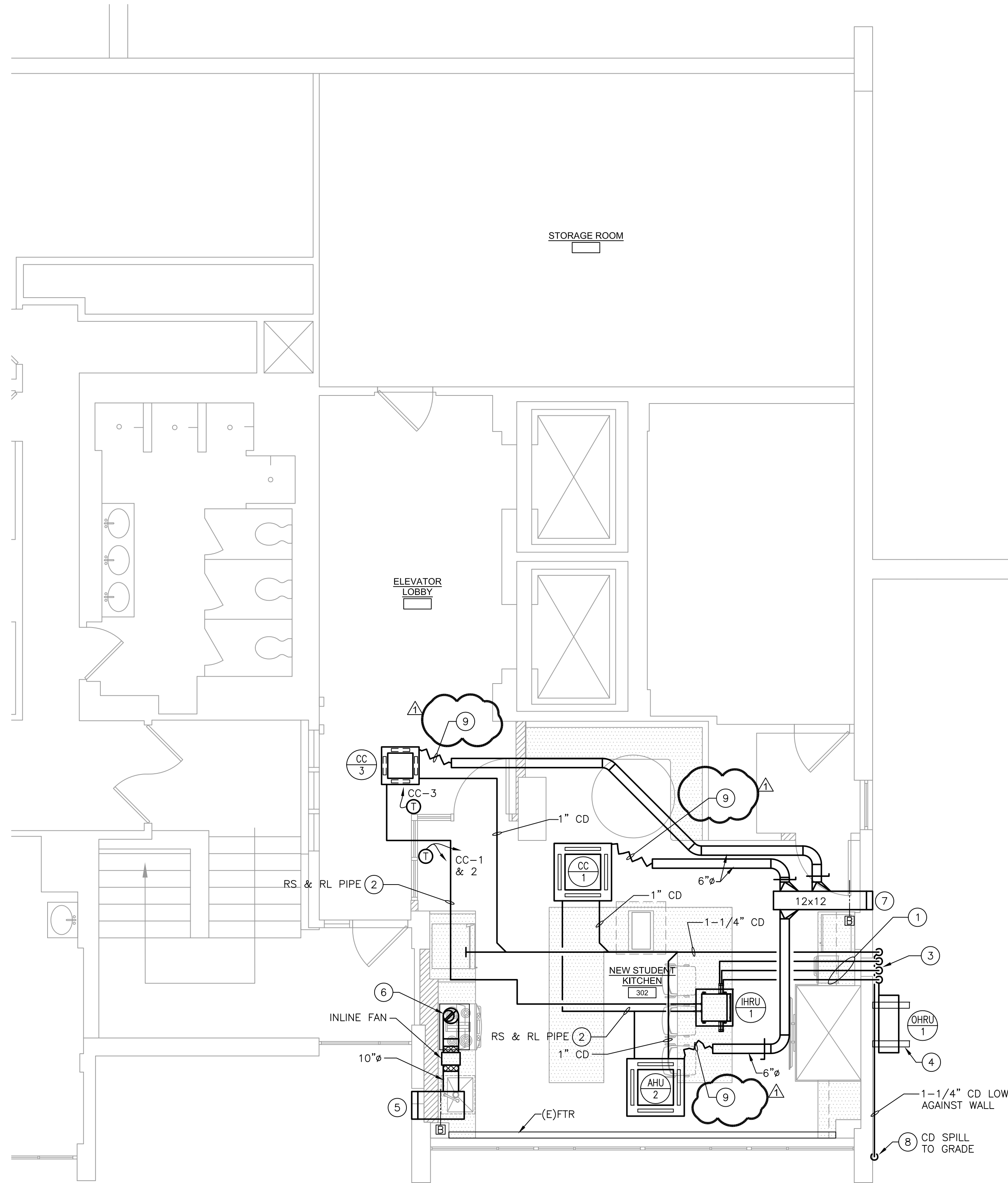
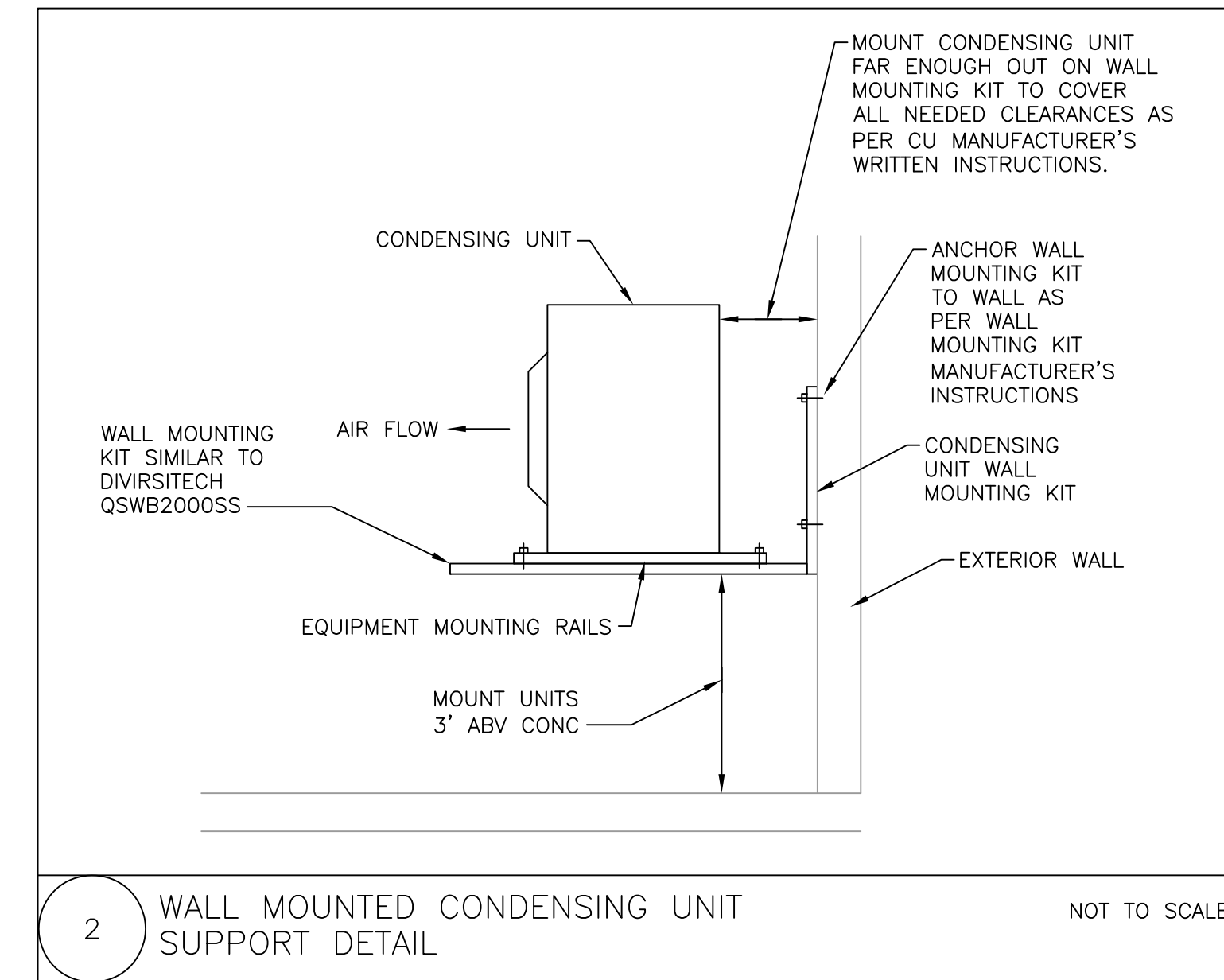
Title

Contact Name (please print)

NOTES:
1. FOR LEGEND, ABBREVIATIONS AND GENERAL NOTES, REFER TO DRAWINGS M-001.

NEW WORK KEY NOTES:

- 1 REFRIGERANT SUCTION, LIQUID & HEAT RECOVERY PIPING FROM OUTDOOR HEAT RECOVERY UNIT TO INDOOR HEAT RECOVERY UNIT. SIZE ALL LINES PER MANUFACTURERS RECOMMENDATIONS.
- 2 REFRIGERANT SUCTION & LIQUID PIPING FROM INDOOR HEAT RECOVERY UNIT TO CEILING CASSETTE UNIT SIZED PER MANUFACTURERS RECOMMENDATIONS.
- 3 REFRIGERANT SUCTION, REFRIGERANT LIQUID, REFRIGERANT HEAT RECOVERY, & 1-1/4" CONDENSATE DRAIN DOWN EXTERIOR OF BUILDING. PROVIDE ALL PIPING DOWN IN LINEHIDE SIMILAR TO DIVERSITECH EASYGUARD.
- 4 CONDENSING UNIT TO BE WALL HUNG ON EXTERIOR WALL DOWN BY CONCRETE PLATFORM ON FIRST FLOOR BELOW. WALL HANG BRACKET KIT SHALL BE SIMILAR TO DIVERSITECH QSWB2000SS.
- 5 18x12 LOUVER SIMILAR TO GREENHECK ESD-435 MIN 0.50 SQ. FT. FREE AREA.
- 6 10" EXHAUST DUCT DOWN TO KITCHEN HOOD. EXHAUST DUCT TO TRANSITION TO 7" DURING DROP TO MATCH HOOD CONNECTION. PROVIDE DENLER D1030-D-F 30" WIDE HOOD WITH INLINE FAN PROVIDE HOOD WITH ADA HANDICAPPED ACCESSIBLE CONTROL BOX, INTEGRATED FIRE SUPPRESSION SYSTEM, & D1000-E ELECTRIC RANGE ELEMENT DISCONNECT. COORDINATE WITH EC FOR WIRING.
- 7 12x12 LOUVER SIMILAR TO GREENHECK ESD-435 MIN 0.30 SQ. FT. FREE AREA.
- 8 1-1/4" CONDENSATE DRAIN TO RUN ON WALL TO CLEAR CONCRETE PLATFORM AND SHALL TERMINATE BY SPILLING TO GRADE. PROVIDE CONDENSATE DRAIN WITH PREFORMED CONCRETE SPLASH BLOCK AT TERMINATION.
- 9 6" FLEX DUCT TO VENTILATION KIT CONNECTION OF CEILING CASSETTE UNIT. PROVIDE ANY REQUIRED DUCT TRANSITIONS AS REQUIRED TO CONNECT FLEX DUCT TO VENTILATION KIT CONNECTION.



1 MECHANICAL NEW WORK FLOOR PLAN
SCALE: 1/4"=1'-0"

CEILING CASSETTE AIR HANDLING UNIT SCHEDULE														
UNIT TAG	AREA SERVED	TOTAL SUPPLY CFM @ LOW	OUTDOOR AIR CFM	RATED TOTAL COOLING BTU/HR	RATED TOTAL HEATING BTU/HR	ELECTRICAL CHARACTERISTICS				MAXIMUM DIMENSIONS, IN. LxWxH	MAXIMUM WEIGHT LBS.	TYPE	BASIS OF DESIGN MANUFACTURER & MODEL NO.	SERVED BY
						VOLTS	PHASE	CYCLE	AMPS					
CC-1	LOUNGE	670	60	24,200	27,300	208	1	60	1.67	38x38x12	60	CEILING CASSETTE	LG ARNU243TA4	CU-1
CC-2	LOUNGE	670	60	24,200	27,300	208	1	60	1.67	38x38x12	60	CEILING CASSETTE	LG ARNU243TA4	CU-1
CC-3	ELEVATOR LOBBY	247	25	12,300	13,600	208	1	60	0.20	24x24x10	32	CEILING CASSETTE	LG ARNU123TRD4	CU-1

1. PROVIDE ALL UNITS WITH WALL MOUNTED HARD-WIRED THERMOSTAT. CC-1 & CC-2 SHALL RUN OFF ONE THERMOSTAT.
2. PROVIDE ALL UNITS WITH INTEGRAL CONDENSATE PUMP.
3. PROVIDE ALL UNITS COMPLETE WITH GRILLE.
4. PROVIDE ALL UNITS WITH CONDENSATE OVERFLOW SWITCH AND INTERLOCK WITH UNIT FOR SHUTDOWN.
5. PROVIDE ALL UNITS WITH A VENTILATION KIT FOR CONNECTION TO OUTDOOR AIR DUCTS.

VRF OUTDOOR HEAT RECOVERY UNIT SCHEDULE																		
UNIT TAG	TONS	NOMINAL COOLING CAPACITY BTUH	NOMINAL HEATING CAPACITY BTUH	QTY.	H.P. EA.	COMPRESSOR		CONDENSER FAN MOTOR		ELECTRICAL CHARACTERISTICS				MAX. AMBIENT TEMP. °F	MAXIMUM DIMENSIONS, IN. LxWxH	OPERATING WEIGHT LBS.	BASIS OF DESIGN MANUFACTURER AND MODEL NO.	
						RLA	COMP.#	QTY.	KW EA.	FLA	VOLTS	PHASE	CYCLE					MCA
OHRU-1	5	60,000	64,000	1	-	19.5	1/2,3/4/5	2	-	0.5	208	3	60	25.4	122	38x13x55	260	LG ARUB060GS54

1. PROVIDE UNIT WITH LOW AMBIENT WIND BAFFLE.
2. PROVIDE UNIT WITH EC PROVIDED NON-FUSED DISCONNECT SWITCH.
3. PROVIDE UNIT WITH WALL HANG BRACKET KIT SIMILAR TO DIVERSITECH QSWB2000SS.

VRF INDOOR HEAT RECOVERY UNIT SCHEDULE												
UNIT TAG	UNITS SERVED	NO. OF PORTS	MAX PORT CAPACITY BTUH	MAX UNIT CAPACITY BTUH	ELECTRICAL CHARACTERISTICS				MAXIMUM DIMENSIONS, IN. LxWxH	OPERATING WEIGHT LBS.	BASIS OF DESIGN MANUFACTURER AND MODEL NO.	
					VOLTS	PHASE	CYCLE	AMPS				
IHRU-1	CC-1/CC-2/CC-3	2	60,000	120,000	208	1	60	0.06	31x26x9	33	LG PRHR023A	

No.	Date	Description
1	01/03/24	Addendum No. 1
	10/08/23	Permit and Construction
	09/15/23	Permit and Construction

DiGroupArchitecture
ARCHITECTURE FOR CHANGE

15 Bethany Street • New Brunswick, NJ 08901 • T:732.246.6242
2450 W. Hunting Park Ave., Bldg 9 • Philadelphia, PA 19129-1302 • F:215.624.2400

Jeffrey D. Venozza, AIA
NJ RA #10827199

DO NOT SCALE. DRAWING MAY BE PRINTED AT REDUCED SCALE. CONSULT WITH ARCHITECT FOR DIMENSIONS.

Client:

Montclair State University
1 Normal Avenue
Montclair, NJ 07043

Project:

Bohn Hall - 3rd Floor
Community Kitchen Renovation
Stone Street
Montclair, NJ 07043
MSU Project No: PR23C006

Drawing Information:

Project No: 23.033
Date: 23.033
Drawn By: TMW
Checked By: RLD

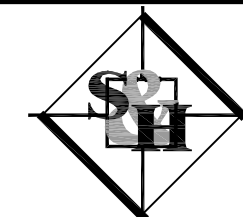
Sheet Name:

MECHANICAL NEW WORK FLOOR PLAN

Sheet No:

M-100

M/E/P Engineer:



SCHILLER AND HERSH ASSOCIATES, INC.
Consulting M/E/P Engineers
636 Skippack Pike, Suite 200
Blue Bell, PA 19422
Certificate of Authorization: 24GA28014000
S&H JOB #2365A

RICHARD L. DELP, PE
NEW JERSEY PROFESSIONAL ENGINEER
LICENSE NO.: GE45368

