

For more information contact:

**Dr. Ashwin Vaidya**

Director, SHIP

Associate Professor

245 Richardson Hall,

[vaidyaa@mail.montclair.edu](mailto:vaidyaa@mail.montclair.edu)

973-655-2139

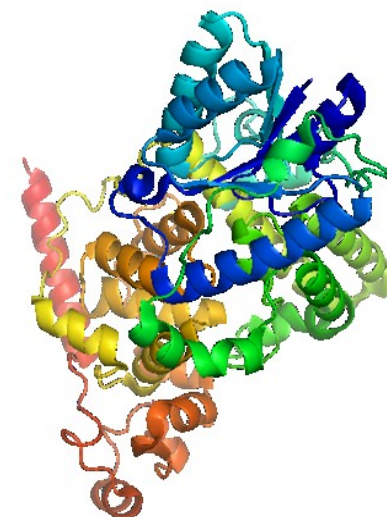


SHIP is made possible by funding from Celgene and the initial support of Merck and Roche.



**MONTCLAIR STATE**  
UNIVERSITY

# Science Honors Innovation Program (SHIP)



**The College of Science  
and Mathematics**

## Application



Students in their Sophomore year are eligible to apply for this program which lasts two years. In order to be accepted, students must:

- Have a GPA of 3.5 or better in the freshman and sophomore years.
- Write a short, compelling proposal to conduct research with a mentor from the College of Science and Mathematics.
- Provide one or two recommendation letters.

## Research

Our Students have conducted a variety of research projects in diverse areas such as:

- Gravitational Wave Detection
- Drug Design
- Spread of Disease in Amphibian Species
- Brain Tumor Growth
- Big Data and Networks
- Cognitive Neuroimaging
- Pathogens and Human Defense Mechanisms
- Vortex Induced Vibrations.

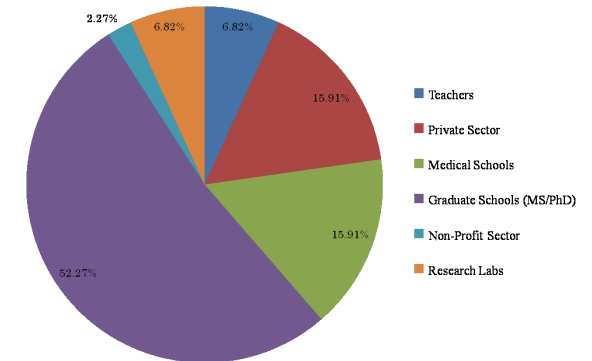
## The Program

The Science Honors Innovation Program, or SHIP, is a research intensive program for undergraduates majoring in one of the CSAM disciplines providing a wealth of opportunities for students to conduct research and to become deeply involved in the local and global research community. SHIP also provides financial support for student research, travel to conferences and workshops, summer stipends and scholarships.

The SHIP program is an unparalleled opportunity for undergraduates to get involved in the research community, get a head start on graduate school, and compete for awards, fellowships and admission to top PhD programs. SHIP students and faculty meet frequently for formal and informal discussions and seminars, and SHIP students are given access to research faculty in every discipline.



## SHIP Alumni Where Are They Now



### Graduate Schools

- Cornell University
- University of Minnesota
- Montana State University
- Oregon State University
- Plymouth State University
- UNC - Chapel Hill
- University of Pittsburgh
- Virginia Tech
- Carnegie Mellon University
- University of Florida
- Montclair State University
- NYU College of Dentistry
- Rutgers Medical School
- Kansas City University of Medicine

### Industry/Research Labs

- EPA
- Fluids Imaging Technologies
- Sterling Horticultures
- ADP
- Cogate Palmolive
- Schlumberger, Alaska
- Mote Marine Laboratory
- National Cancer Institute