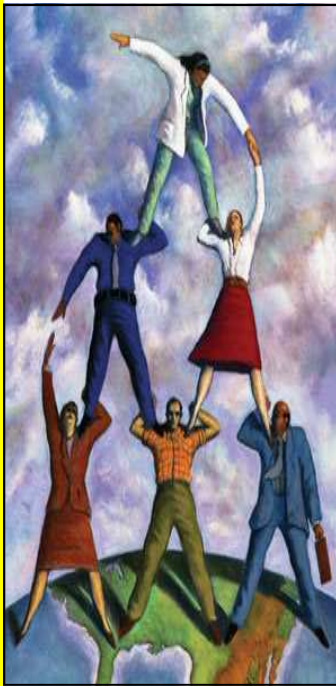


Minor in Leadership Development Through Civic Engagement

Purpose Statement

Montclair State University is continually developing innovative curriculum initiatives that meet the needs of students which allow them to succeed as highly educated, productive and engaged citizens. The Minor in Leadership Development Through Civic Engagement continues this tradition by providing students with the opportunity to develop and apply knowledge and skills in the community, and to become current and future leaders. The Minor assists students in being socially responsible and engaged leaders in the 21st century.



Kenneth Brook
Department of Anthropology
973-655-7542
brookk@mail.montclair.edu

Rick Brown
Student Leadership Programs
973-655-7818
brownri@mail.montclair.edu

Bryan Murdock
Director of Experiential Education
973-655-6831
murdockb@mail.montclair.edu

The minor in Leadership Development Through Civic Engagement recognizes that leadership development is important to one's personal, professional, and civic development. Through engagement in the wider community, this Minor assists students from any major in developing the knowledge and skills to enhance performance in current and future leadership roles. Students develop competencies in three areas: setting direction; aligning and motivating people; and managing complex challenges. Through the applications of these competencies, students address important life issues, and develop a deeper commitment to using knowledge and skills in the service of the public good.

MINOR IN LEADERSHIP DEVELOPMENT THROUGH CIVIC ENGAGEMENT CURRICULUM

A. Required Courses

PSYC 294-Psychology of Leadership.

This course allows students to understand and articulate their own implicit theories of leadership and develop their own leadership styles. While receiving a grounding in historical and contemporary psychological theories on leadership, they will practice leadership through community service. This is a service-learning course. Meets Gen Ed 2002 Social Science for non-psychology majors only. 3 hours lecture.

LEAD 400-Applied Leadership Development Seminar

Prerequisites: Departmental permission, PSYC 294 and nine credits in Leadership Development Through Civic Engagement Minor. Special fee. This is the capstone course for the Leadership Development Through Civic Engagement Minor. The course integrates work experience outside the formal classroom environment with in-class seminars, attended by students placed in diverse community agencies and conducted by an interdisciplinary Leadership Development Faculty team.

B. Elective Course (take one course from each category)

I. Ethics/Values: Courses in this category address how an individual's cognition and personal identity both affect and are affected by larger social system; and, specifically, the development of attitudes that inform one's leadership strategies and penchant for community engagement.

ANTH 210-Applied Anthropology

The course emphasizes the use of anthropology in contemporary societies by stressing the skills and knowledge needed for the development of practical solutions to current problems. Special attention is placed on: policy decision-making, community development, cultural resource management, advocacy and social impact assessment. Meets the 1983 General Education Requirement (GER) - Contemporary Issues. 3 hours lecture.

PHIL 210-Ethics

The nature of ethical judgments, the meaning of moral concepts, the conditions of moral responsibility and the methodological presuppositions of ethical theories. Meets the 1983 General Education Requirement (GER) Humanities, Philosophy/Religion. Meets Gen Ed 2002 - Humanities, Philosophy or Religion. 3 hours lecture.

PSYC 314-Psychology of Judgment and Decision Making

This course examines how human beings make decisions and judgments. It reviews how personal values, uncertainty and cognitive, social, and neurological processes affect decision-making. This course draws upon a wide range of examples from many fields including psychology, economics, criminology, and medicine. Students will also learn strategies and techniques to enhance judgment. Prerequisites: PSYC 301. 3 hours lecture.

SOCI 206-Individual and Society

The relationship between culture, social structure, various institutions and the individual's social perceptions, sense of self and self-presentation are explored in this course. Meets Gen Ed 2002 - Social Science, Social Science. Meets the 1983 General Education Requirement (GER) - Electives, Personal/Professional Issues. 3 hours lecture.

II. Relational Dynamics: Courses in this category consider concepts and practical skills of communication in interpersonal, group, and organizational contexts. Special attention is given to issues of collaborative problem solving and innovation.

LNGN 230-Language in Society

Correlations between language varieties, their functions in particular settings, and the characteristics of their speakers; also, the role of second languages within a society: Pidgin, Creole, Lingua Franca, Diglossia, etc. Meets Gen Ed 2002 - Social Science, Social Science. Meets the 1983 General Education Requirement (GER) - Social Science, Topic Course. 3 hours lecture.

LNGN 255-Language and Gender

A sociolinguistic study of the interaction of language with sex and gender. Includes a survey of the literature on language and gender plus practical experience in collecting and analyzing linguistic data. Meets Gen Ed 2002 Social Science, Social Science. Meets the General Education Requirement (GER) - Social Science, Topic Course. Meets the World Languages and Cultures Requirement. 3 hours lecture.

LSLW 220-Conflict and Its Resolution

Exploration of conflict management skills negotiation and mediation. Explores ways to resolve conflicts between diverse groups and situations: gender, race, and age, current developments and practical applications such as peer mediation, negotiation in the workplace, and dispute resolution in the court system. Students may take LSLW 220 or PALG 308, but not both courses. Students in the Paralegal Minor should take PALG 308. Meets Gen Ed 2002 Social Science, Social Science. Meets the 1983 General Education Requirement (GER) - Contemporary Issues. Meets the World Languages and Cultures Requirement - World Cultures. 3 hours lecture.

SPCM 230-Listening

Studies students only. The development of critical, discriminative, appreciative and empathic listening skills; emphasis on listening theory/concept exploration, listening skill building, and experiential learning through theory application. 3 hours lecture.

SPCM 374-Group Processes

Effective communication patterns for small groups; variables such as cohesiveness, roles, problem solving, leadership, decision-making are related to the development and maintenance of productive interaction. Meets the University Writing Requirement for CSOC and CSSC majors. 3 hours lecture.

III. Diverse Perspectives in Organizational and Societal Contexts: Courses in this category help students understand that contemporary leadership requires that recognition and integration of varied cultural modes of understanding and behaving topics such as globalization, social justice, and diversity will be explored.

ANTH 110-Anthropology of Multicultural America

Analyzes the diversity of racial, ethnic, religious, occupational, and other subcultures and subgroups within the U.S. Emphasis on the character of American culture. Subpopulations are examined in relationship to each other and to the mainstream culture. Meets Gen Ed 2002 - Social Science, Social Science. Meets the 1983 General Education Requirement (GER) - Contemporary Issues. Meets the Human and Intercultural Relations Requirement (HIRR). Meets the World Languages and Cultures Requirement - World Cultures. 3 hours lecture.

ANTH 202-Anthropology of Globalization

Cross-cultural perspectives on the rapid social and cultural changes spawned by globalization. The implications and consequences of globalization on society. Meets Gen Ed 2002 - Social Science, Non-Western Cultural Perspectives. Meets the 1983 General Education Requirement Social Science Topic Course. 3 hours lecture.

GLQS 200-Intro. To Gay, Lesbian, Bisexual, Transgender, and Queer Studies

The course introduces students to study of same-sex desire and GLBTQ identities, relationships and communities. Through current research, the course examines the social construction framework for analyzing contemporary sexualities, gendered identities, and the discourses and practices that maintain them. 3 hours lecture.

LNGN 245-Language and Culture

A study of language in its cultural context. Relationship of linguistic to non-linguistic variables: ethnosemantics, linguistic relativity principle, componential analysis. Meets Gen Ed 2002 - Social Science, Social Science. Meets the 1983 General Education Requirement (GER) - Social Science, Topic Course. 3 hours lecture.

SOCI 202-Racial and Ethnic Relations

The social meaning of race and ethnicity. The social, psychological and structural sources of racism; the consequences of this phenomenon to groups, situation and comparative data. Meets the 1983 General Education Requirement (GER) Contemporary Issues. Meets the Human and Intercultural Relations Requirement (HIRR). Meets the World Languages and Cultures Requirement -World Cultures. 3 hours lecture.

SOCI 220-Sociology of Rich and Poor Nations

This course deals with the disparity in standards of living among the nations of the world, and strategies to eradicate poverty. This course focuses on the historical, political, economic, cultural, and sociological relationships that have contributed to the current division of labor in the world and world inequalities. Furthermore, it focuses on specific social problems faced by poor nations while comparing social institutions in Western societies with their counterpart in non-Western societies. Meets Gen Ed 2002 - Social Science, Non-Western Cultural Perspectives. Meets the 1983 General Education Requirement (GER) - Social Science, Non-Western Cultural Perspectives. 3 hours lecture.

WMST 102-Women's Worlds

This course introduces students to the field of Women's Studies. It is designed to make students aware of the new discoveries in feminist research and to focus on many aspects of the female experience. The course is designed to help students understand different methodologies in diverse disciplines and to treat areas such as literature, history, psychology, and the arts through a thematic approach. Meets Gen Ed 2002 - Social Science, Social Science. Meets the 1983 General Education Requirement (GER) - Contemporary Issues. Meets the World Languages and Cultures Requirement - World Cultures. 3 hours lecture.

IV. Effective Citizenship: Courses in this category examine historical, legal, community based, and governmental dimensions of citizenship in a democratic society. Through the examination of case studies, students consider their own community membership and responsibilities, and forge a plan for productive civic engagement.

EDFD 221-Historical Foundations of American Education

This course offers students the crucial sequence of ideas that constitute one of the central themes in American society and culture. Since its beginnings, American thinkers have seen education as the key to an informed citizenry. Major themes in American education will be looked at through the reading of primary and secondary sources. Meets Gen Ed 2002 Social Science, American or European History. 3 hours lecture.

ENVR 313-Environmental Policy

Junior or senior status or permission of the instructor. This course studies U.S. environmental policy in air, water, land use, agriculture, energy, and waste disposal and other areas. It examines the major ideas that shape environmental policy, the institutional processes by which these ideas are turned into policy, and how these policies affect both U.S. and global environments. 3 hours lecture.

EUGS 206-Intro to American Urban Studies

An interdisciplinary introduction to the development of American cities and their suburbs, with an emphasis on current patterns of urbanism and urbanization. The growth and evolution of metropolitan systems, urban-suburban ecology, and planning responses to critical metropolitan issues. Meets Gen Ed 2002 - Social Science, Social Science. Meets the 1983 General Education Requirement World Cultures. 3 hours lecture.

JUST 201-Perspectives on Justice Studies II

Experiential study of: the judicial process, work roles and careers, institutions, the and related issues such as children's rights and dispute resolution within the criminal justice system. Emphasis on the relationship of theory to practice and on the contexts in which tasks are accomplished and roles are performed. Classroom issues are viewed from a real world perspective through field trips, site visits, supervised observations and fieldwork, and integrated through journals, discussions and research. 2 hour lecture, 2 hour other.

POLS 101-American Government and Politics

This course will introduce students to the basic institutions and processes of American politics. Meets Gen Ed 2002 Social Science, Social Science. Meets the 1983 General Education Requirement (GER) - Social Science, Topic Course. 3 hours lecture.

SOCI 113-Social Problems

How social structure and social institutions are related to problems such as discrimination, environmental pollution, violence, and poverty. Meets Gen Ed 2002 - Social Science, Social Science. Meets the 1983 General Education Requirement (GER) - Contemporary Issues. 3 hours lecture.

Courses that may be substituted for one of the Category Electives with the Program Director's Permission (only 3 s.h. may be substituted):

COED 201-Community-Based Learning

The course is offered to students engaging in community-based learning. It provides the opportunity for students to participate, observe, reflect, and synthesize the experience. It will advance civic and professional development of students through practical experience in the local and business community.

COED 401-Cooperative Education-Experience I

Cooperative Education is an internship program that integrates academic study and classroom theory with on-the-job experiences. It involves an educational partnership among Montclair State, business and non-profit organizations for the professional development of students. Academic faculty assess the learning and award credits and a supervisor/employer evaluates progress. Students may not exceed 16 credits through enrollment in multiple co-op courses.

C. REQUIRED MINIMUM TOTAL: 18 s.h.