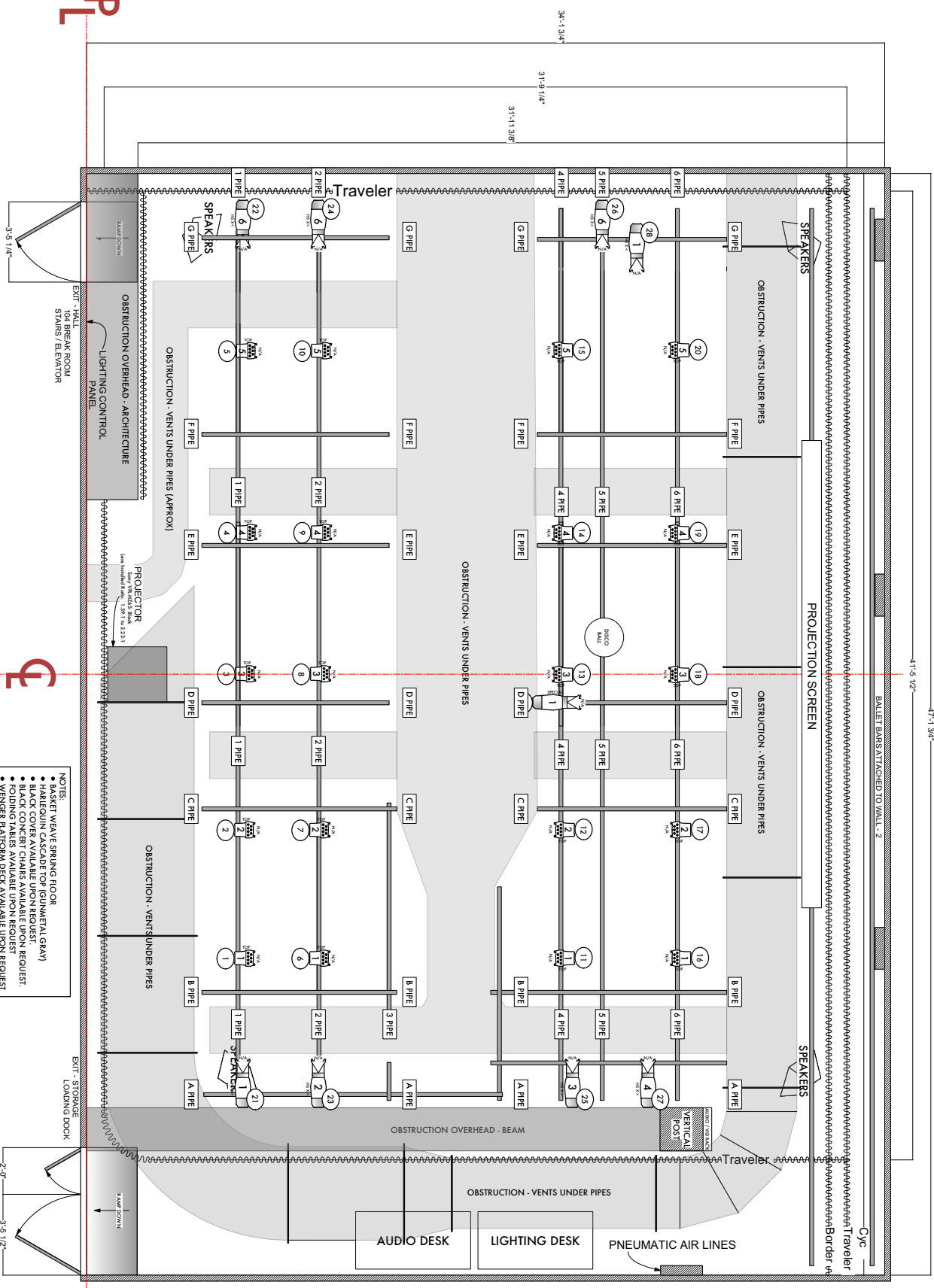


STUDIO 104



KEY TO SYMBOLS

- COLOR SOURCE SPOT - 50°
- COLOR SOURCE BAR

ACCESSORIES

LEGEND

- LEGEND
- COLOR
- ACCESSORY
- TEMPLATE
- PURPOSE
- UNIT #
- 21 CHANNEL

LIGHTING DESIGN BY:
JASON M. FLAMOS



THIS DRAWING REPRESENTS A TENTATIVE CONCEPT AND CONSULTING DESIGNER'S SUGGESTIONS ONLY.
 The Designer is not responsible for determining the structure or weight of equipment used in this design. The Designer is not responsible for determining the location, quantity, or weight of equipment used in this design. The Designer is not responsible for determining the location, quantity, or weight of equipment used in this design. The Designer is not responsible for determining the location, quantity, or weight of equipment used in this design.

REV	REVISIONS	DATE
1	PER TO VERTICAL LINE, VERTICAL BEHIND THE LIGHTING DESK	04.16.18
2	REVISION TO SPEAKER POSITIONS	X
3	X	X
4	X	X

KASSER THEATER - RM 104
 NAME OF SHOW



DIRECTOR: X
 LIGHTING DESIGN: X
 ASSOC LIGHTING DESIGN: X
 COSTUME DESIGN: X

GROUND PLAN

SCALE: 1/2" = 1'-0" EXCEPT WHERE NOTED
 DATE: 04.16.18 # 1 OF 1
 DRAWN: JMF

- NOTES:
- FLEET WEAVE SPRING FLOOR
 - HARKQUIN CASCADE TOP (UNMETAL GRAY)
 - BLACK COVER AVAILABLE UPON REQUEST.
 - BLACK CONCERT CHAIRS AVAILABLE UPON REQUEST.
 - FOLDING TABLES AVAILABLE UPON REQUEST
 - WENGER PLATFORM DECK AVAILABLE UPON REQUEST

PL



