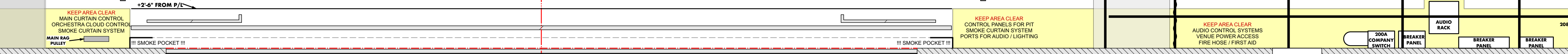
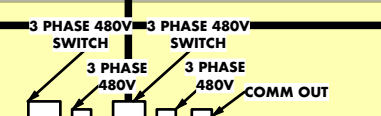


NOTE:
FLY RAIL IS A DOUBLE PURCHASE SYSTEM
WEIGHT = BRICKS ABOVE PIPE (YELLOW) RACEWAY (PURPLE) WEIGHT
YOU CANNOT HANG ON THE MOTORIZED ACOUSTIC CLOUDS
LS# 14 ARE PERMANENT CANNOT BE MOVED OR SWAPPED.

ITEM	WEIGHT	TRIM	DIST.	#
WHITE BOUNCE	10 HALF	DECK	39' 3"	31
			38' 7"	30
			37' 11"	49
6 ELECTRIC	30 HALF		37' 3"	48
			36' 7"	47
WHITE RP SCREEN	7 FULL	DECK	35' 11"	46
BLACK SCRM	4 FULL	DECK	35' 3"	45
BLACK LEGS	4 FULL	DECK	34' 7"	44
FULLSTAGE BLACK	11 FULL / 1 HALF		33' 4"	43
MOTORIZED ACOUSTIC CLOUDS #1			33' 0"	W3
SR LADDERS			NA	LAD
5 ELECTRIC	23 FULL		31' 11"	42
			30' 7"	40
AUDIO MONITORS	13 FULL		29' 9"	39
			28' 3"	38
#4 BLACK LEGS	4 FULL	DECK	28' 7"	37
#4 BLACK BORDER	7 FULL		27' 11"	36
			27' 3"	35
			26' 7"	34
			25' 11"	33
4 ELECTRIC	21 FULL		25' 5"	32
			24' 7"	31
			23' 11"	30
			23' 3"	29
#3 BLACK LEGS	4 FULL	DECK	22' 7"	28
#3 BLACK BORDER	7 FULL		22' 1"	27
MOTORIZED ACOUSTIC CLOUDS #2			21' 0"	W2
			19' 9"	26
			19' 3"	25
			18' 7"	24
3 ELECTRIC	21 FULL		17' 11"	23
			17' 3"	22
			16' 7"	21
			15' 11"	20
#2 LEGS	4 FULL	DECK	15' 3"	19
#2 BORDER	7 FULL		14' 7"	18
			13' 11"	17
			13' 3"	16
			12' 7"	15
2 ELECTRIC	21 FULL		11' 11"	14
			11' 3"	13
			10' 6"	12
MOTORIZED ACOUSTIC CLOUDS #1			8' 10"	W1
#1 BLACK LEGS		DECK	7' 10"	11
#1 BLACK BORDER			7' 11"	10
			6' 2"	9
			5' 11"	8
AUDIO MONITORS	20 FULL		5' 3"	7
1 ELECTRIC	20 FULL		4' 7"	6
Z-YEK	1 FULL / 1 HALF		3' 11"	5
FULLSTAGE MOVE SCREEN	27 FULL	GRID	3' 25"	4
SR LADDERS			2' 7"	3
FALSE PRO LEGS (BLACK)	38 FULL / 1 HALF		1' 9.5"	2
FALSE PRO HEADS (BLACK)	37 FULL / 1 HALF		2' 9"	1
FIRE CURTAIN			0"	PC
PLASTER LINE			X1	PL

NOTE:
OLD FIXTURES IN STORAGE SR GRID
CONSULT STAFF TO USE WING AS HANGING POSITION

SHELL STORAGE POS.
CHECK IN SHELL
INDICATE STORAGE LOCATION ON SHELL
BY SPACING MARKS WITH NUMBER

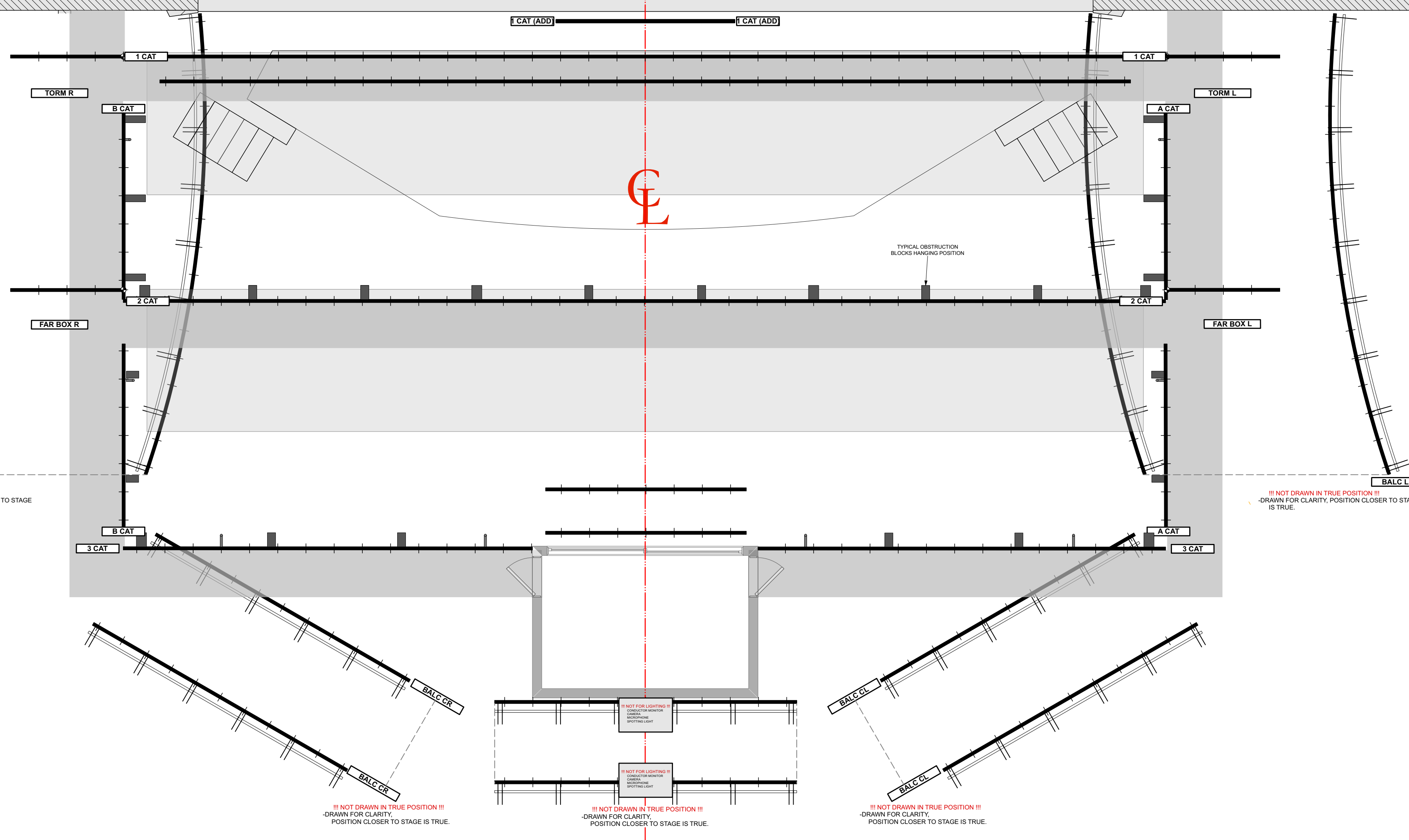


KEY TO SYMBOLS

- S4-19 750w
- S4-26 750w
- S4-36 750w
- S4-50 750w
- S4-15/30 750w
- S4-25/50 750w
- S4 PAR - VN5P - 750w
- S4 PAR - NSP - 750w
- S4 PAR - MFL - 750w
- S4 PAR - WFL - 750w
- FRESNEL - 2K
- FRESNEL - 5K
- S4 LUSTR II 19"
- S4 LUSTR II 26"
- S4 LUSTR II 36"
- S4 TUNGSTEN LED 19"
- D60 LED

ACCESSORIES

- FULL TOPHAT
- HAIR FAN
- EYELASH
- BARN DOORS
- DEEP IN BEE
- HAIR EYE LASH



!!! NOT DRAWN IN TRUE POSITION !!!
-DRAWN FOR CLARITY, POSITION CLOSER TO STAGE IS TRUE.

!!! NOT DRAWN IN TRUE POSITION !!!
-DRAWN FOR CLARITY, POSITION CLOSER TO STAGE IS TRUE.

!!! NOT DRAWN IN TRUE POSITION !!!
-DRAWN FOR CLARITY, POSITION CLOSER TO STAGE IS TRUE.

!!! NOT DRAWN IN TRUE POSITION !!!
-DRAWN FOR CLARITY, POSITION CLOSER TO STAGE IS TRUE.

!!! NOT DRAWN IN TRUE POSITION !!!
-DRAWN FOR CLARITY, POSITION CLOSER TO STAGE IS TRUE.

LIGHTING DESIGN BY:

THIS DRAWING REPRESENTS VISUAL CONCEPTS AND CONSTRUCTION SUGGESTIONS ONLY.
The Designer is not responsible for the construction of the actual rigging system. It is the responsibility of the contractor to verify all rigging and load capacities with the manufacturer and local building codes and standards.

REV	REVISIONS	DATE
1	CONCEPTUAL LIGHTING DESIGN AND LAYOUT CLASS 1 / LAYERS OVERALL	09/23
2	ORIGINAL FINAL FOR FIRST SEASON	09/21
3		X
4		X

**KASSER THEATER
REP 2024**

**MONTCLAIR
STATE UNIVERSITY**

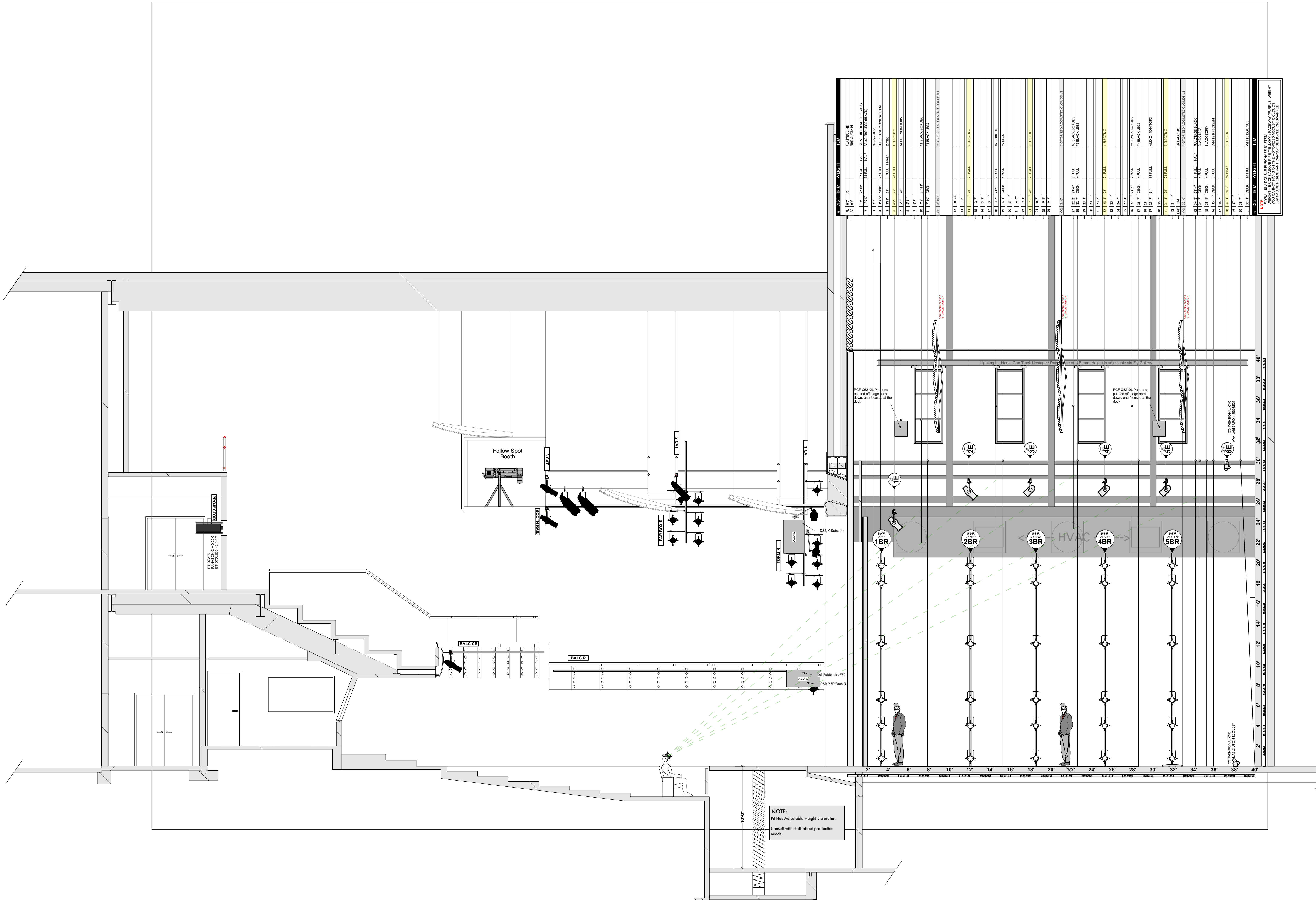
DIRECTOR X
LIGHTING DESIGN X
ASSOCIATE LIGHTING DESIGN X
SET DESIGN X
COSTUME DESIGN X

SCALE: 1/4"=1'-0" EXCEPT WHERE NOTED

DATE: 04.23.21

DESIGN: JMF
DRAWN: JMF

#1 of 2



NOTE:
Pit Has Adjustable Height via motor.
Consult with staff about production needs.

ITEM	QTY	DESCRIPTION	UNIT	WEIGHT
1	1	1\"/>		

KEY TO SYMBOLS

- S4-19 750w
- S4-26 750w
- S4-36 750w
- S4-50 750w
- S4-15/30 750w
- S4-25/50 750w
- S4 PAR - VN5P - 750w
- S4 PAR - NSP - 750w
- S4 PAR - MFL - 750w
- S4 PAR - WFL - 750w
- FRESNEL - 2K
- FRESNEL - 5K
- S4 LUSTRII 19"
- S4 LUSTRII 26"
- S4 LUSTRII 36"
- S4 TUNGSTEN LED 19"
- D60 LED

ACCESSORIES

- FULL TOP HAT
- HALF HAT
- EYELASH
- BARN DOORS
- DROP IN RIG
- HALF EYE LASH

LIGHTING DESIGN BY:

THIS DRAWING REPRESENTS VISUAL CONCEPTS AND CONSTRUCTION SUGGESTIONS ONLY.
The Designer is not liable for any errors or omissions in this drawing. The Designer is not responsible for any errors or omissions in this drawing. The Designer is not responsible for any errors or omissions in this drawing.

REV	REVISIONS	DATE
1	CONCEPTS AND MATERIALS LIST (CONCEPTS)	09/23
2	ORIGINAL FINAL FOR FIRST SEASON	09/21
3		X
4		X

KASSER THEATER
REP 2034



- DIRECTOR: X
- LIGHTING DESIGN: X
- ASSOC LIGHTING DESIGN: X
- SET DESIGN: X
- COSTUME DESIGN: X

SECTION

SCALE: 1/4"=1'-0" EXCEPT WHERE NOTED

DATE: 04.23.21

DESIGN: JMF

DRAWN: JMF

#2 OF 2