

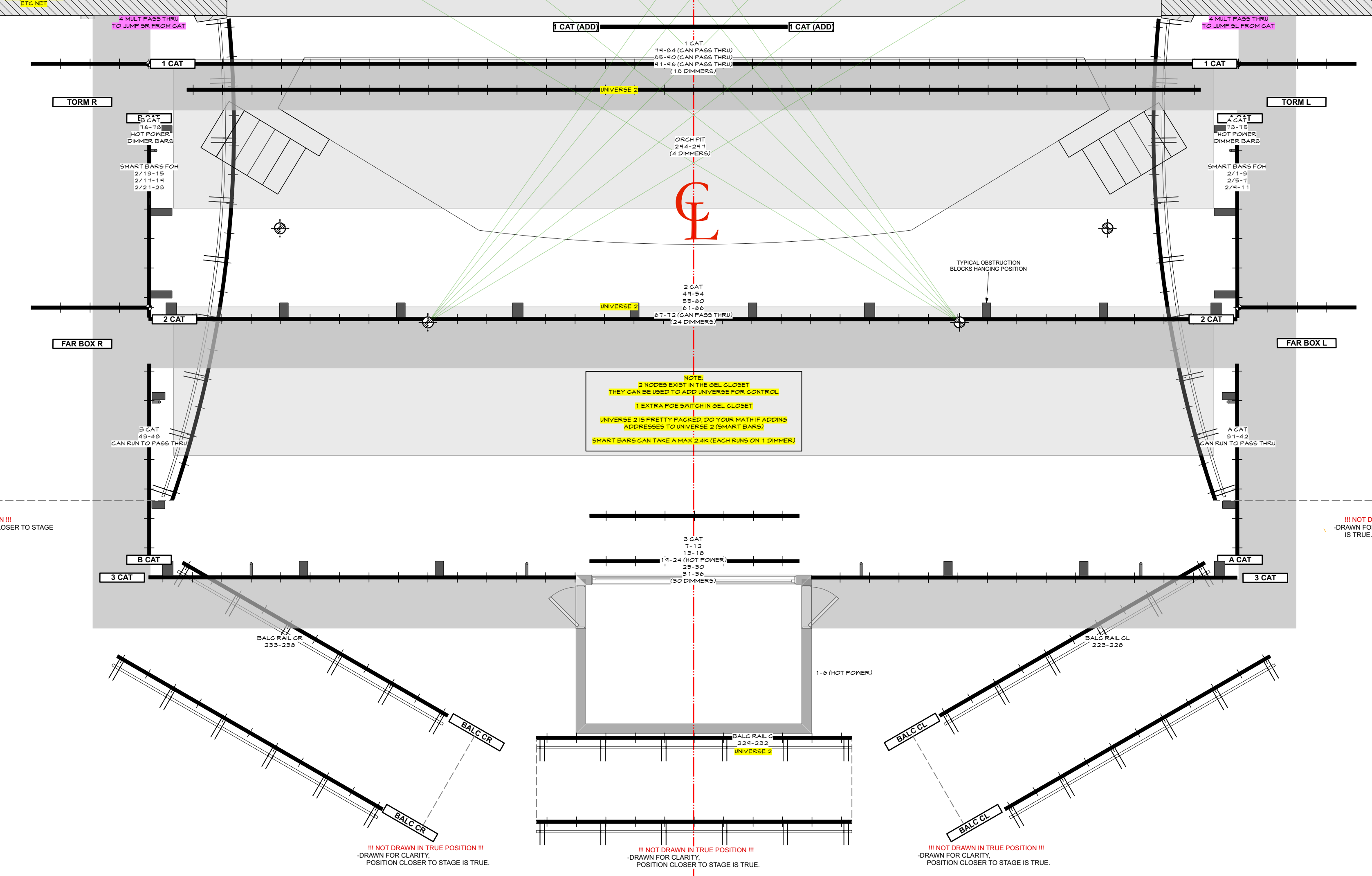
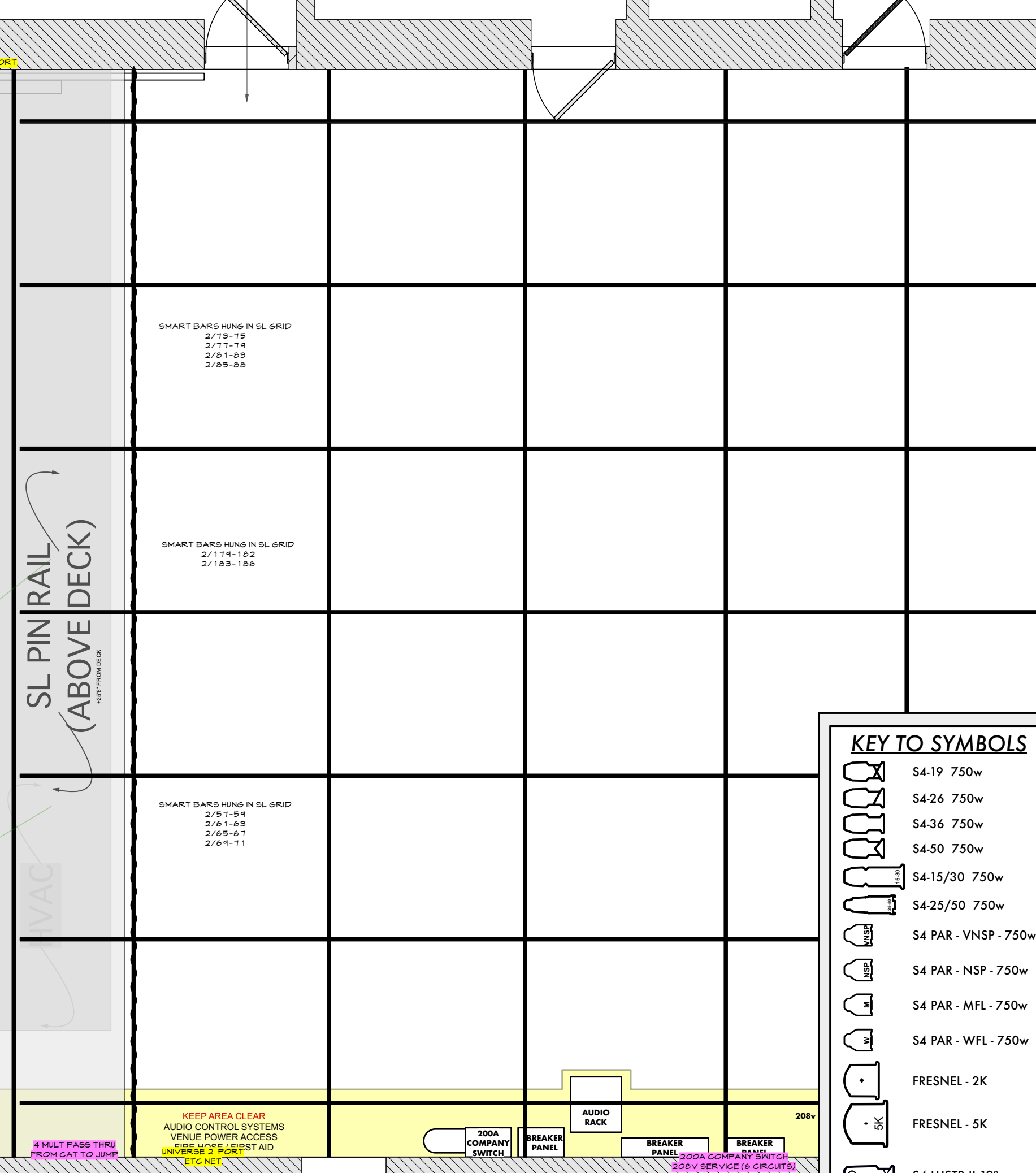
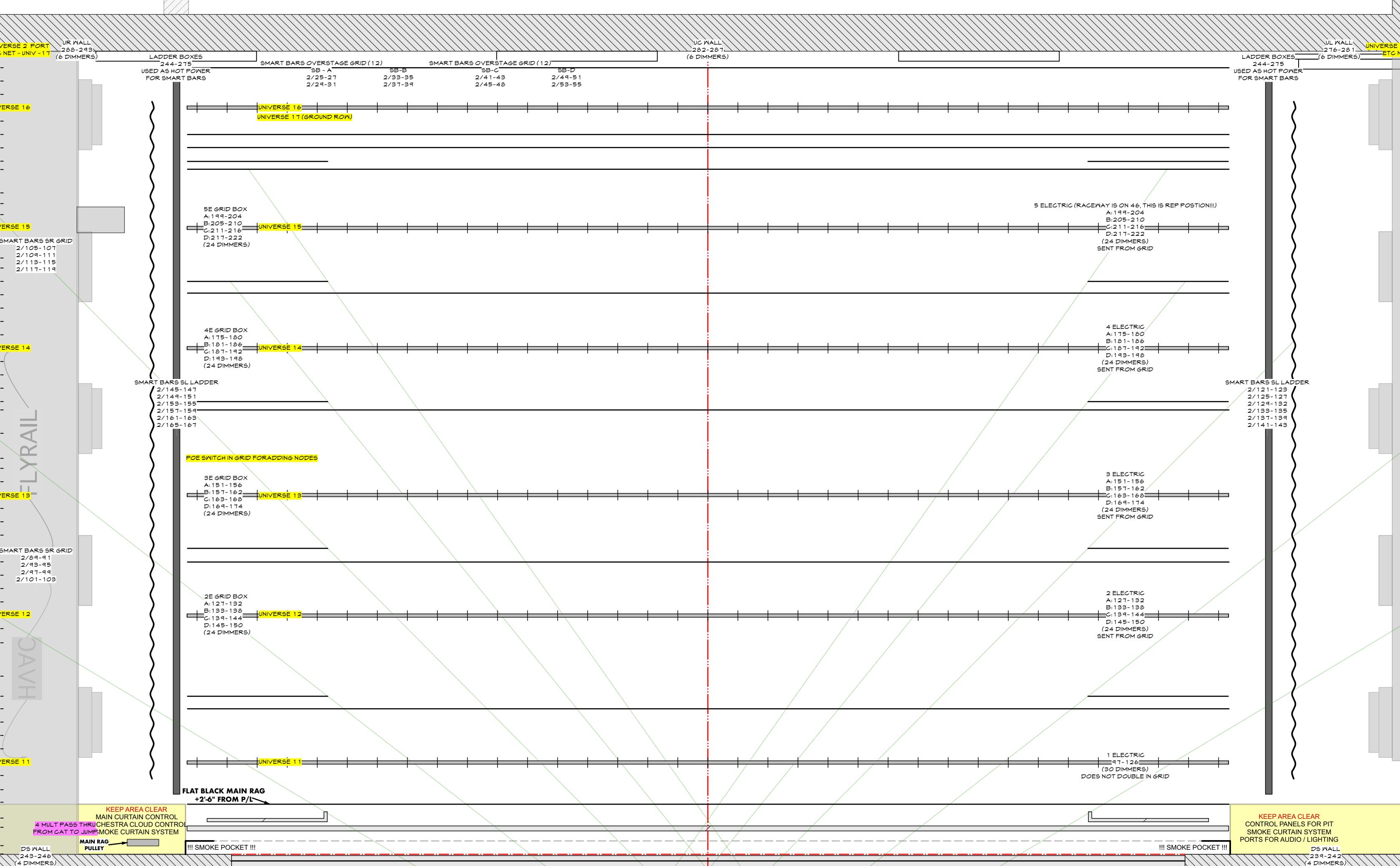
← CROSSOVER →

STORAGE

KITCHEN

NOTE:
FLOOR IS A DOUBLE PURCHASE SYSTEM
WEIGHT BRCKS ABOVE PIPE (YELLOW) / RACEWAY (PURPLE) WEIGHT
YOU CANNOT HANG ON THE MOTORIZED ACOUSTIC CLOUDS
LSL 1-4 ARE PERMANENT CANNOT BE MOVED OR SWAPPED.

ITEM	WEIGHT	TRIM	DIST	LOC	INVT
WHITE BOUNCS	10 HALF	DECK	37' 3"	51	
			37' 11"	49	
4 ELECTRIC	30 HALF	37' 2"	37' 3"	48	INVERSE 16
			37' 11"	47	
WHITE SP SCREEN	7 FULL	DECK	35' 11"	46	
BLACK SCRAM	4 FULL	DECK	35' 3"	45	
BLACK LEGS	4 FULL	DECK	34' 7"	44	
FULLSTAGE BLACK	11 FULL (1 HALF)	33' 4"	34' 2"	43	
MOTORIZED ACOUSTIC CLOUDS #3			33' 0"	W3	
SR LADDER			31' 11"	42	
5 ELECTRIC	23 FULL	38'	31' 3"	41	INVERSE 15
			30' 7"	40	
AUDIO MONITORS	13 FULL	31'	29' 9"	39	
			28' 3"	38	
#4 BLACK LEGS	4 FULL	DECK	28' 7"	37	
#4 BLACK BORDER	7 FULL	23' 4"	27' 11"	36	
			27' 3"	35	
			26' 7"	34	
4 ELECTRIC	21 FULL	38'	25' 3"	33	INVERSE 14
			24' 7"	32	
#3 BLACK LEGS	4 FULL	DECK	22' 7"	31	
#3 BLACK BORDER	7 FULL	23' 4"	22' 2"	30	
MOTORIZED ACOUSTIC CLOUDS #2			21' 0"	W2	
			19' 9"	29	
			18' 3"	28	
3 ELECTRIC	31 FULL	38' 10"	17' 11"	27	INVERSE 13
			17' 3"	26	
			16' 7"	25	
			15' 11"	24	
#2 LEGS	4 FULL	DECK	15' 3"	23	
#2 BORDER	7 FULL	23' 4"	14' 7"	22	
			13' 11"	21	
			12' 5"	20	
AUDIO MONITORS	38'	5' 3"	7'	19	
1 ELECTRIC	30 FULL	35'	4'	18	INVERSE 12
Z-TEK	1 FULL (1 HALF)	35'	3' 11"	17	
FULLSTAGE MOVE SCREEN	27 FULL	GRID	2' 3"	16	
SL LADDERS			2' 7"	15	
FALSE PRO LESS (BLACK)	38 FULL (1 HALF)	17' 5"	2'	14	
FALSE PRO HEADER (BLACK)	27 FULL (1 HALF)	22' 10"	1' 4"	13	
FREE CURTAIN	8" FC			12	
PLASTER LINE	X	0'0"	0"	11	



KEY TO SYMBOLS

- S4-19 750w
- S4-26 750w
- S4-36 750w
- S4-50 750w
- S4-15/30 750w
- S4-25/50 750w
- S4 PAR - VNSP - 750w
- S4 PAR - NSP - 750w
- S4 PAR - MFL - 750w
- S4 PAR - WFL - 750w
- FRESNEL - 2K
- FRESNEL - 5K
- S4 LUSTRE II 19
- S4 LUSTRE II 26
- S4 LUSTRE II 36
- S4 TUNGSTEN LED 19
- D60 LED

ACCESSORIES

- FULL TOPHAT
- HALF HAT
- EYELASH
- BARN DOORS
- DROP IN REE
- HALF EYE LASH

LIGHTING DESIGN BY:

DIMS / UNIVERSE

REV	REVISIONS	DATE
1	CONCEPTS, VENDOR SELECTION, LAMP SELECTION, CLASSIFIED LAYERS OVERLAYS	09/23
2	ORIGINAL FINAL FOR FIRST SEASON	09/21
3		X
4		X

KASSER THEATER REP 2024

MONTCLAIR STATE UNIVERSITY

DIRECTOR: X
 LIGHTING DESIGN: X
 ASSOC LIGHTING DESIGN: X
 SET DESIGN: X
 COSTUME DESIGN: X

DIMS / UNIVERSE

SCALE: 1/4"=1'-0" EXCEPT WHERE NOTED
 DATE: 04.23.21
 DESIGN: JMF
 DRAWN: JMF

#1 of 1