

Technical Specifications - v5.4

Last updated: (Sep 10, 2025)

Last Published: (v5.3 1/30/2024)

ALEXANDER KASSER THEATER

Lobby, Amphitheater & Kasser Studio 104

Montclair State University

Kasser Theater

1 Normal Ave

Montclair, NJ 07043

GPS→ Alexander Kasser Theater

Public Parking is in Red Hawk Parking Deck, adjacent to the theater

Contact Information:

Hillery Makatura

Director of Production Operations

makaturah@montclair.edu

O: 973-655-4455

Marlene Hamm

Production Manager

hammm@montclair.edu

O: 973-655-3189

Colin Van Horn

Technical Director

vanhornc@montclair.edu

O: 973-655-4023

Kevin Johnson

Sr. Production Engineer

johnsonk@montclair.edu

O: 973-655-4012

Jason Flamos

Lighting Supervisor

flamosj@montclair.edu

O: 973-655-6984

Cubby Terry

Facilities & Events Manager

cubbyt@montclair.edu

O: 973-655-7664

Table of Contents:

Click to Navigate

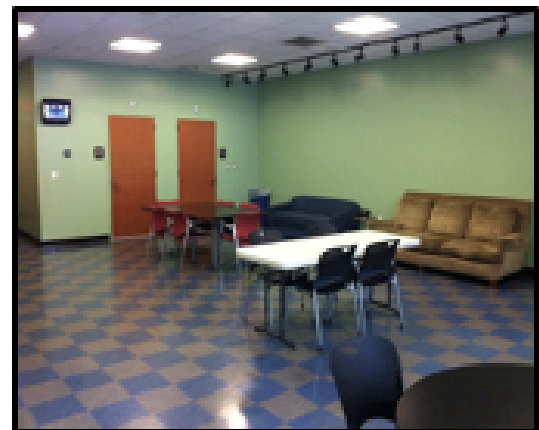
DRESSING ROOM INFORMATION	3
SEATING CAPACITY AND STAGE DIMENSIONS	4
FLY SYSTEM	5
SOFT GOOD INVENTORY	5
PLATFORM INVENTORY	6
CHAIR INVENTORY	6
ORCHESTRA SHELL	7
LIGHTING	8
AUDIO INFO AND INVENTORY	10
VIDEO INFORMATION AND INVENTORY	12
MUSICAL INSTRUMENTS	13
RIGGING/SHOP	13
STUDIO 104	14
KASSER LOBBY	15
AMPHITHEATER	16
TRAVEL/DIRECTIONS	17

DRESSING ROOM INFORMATION

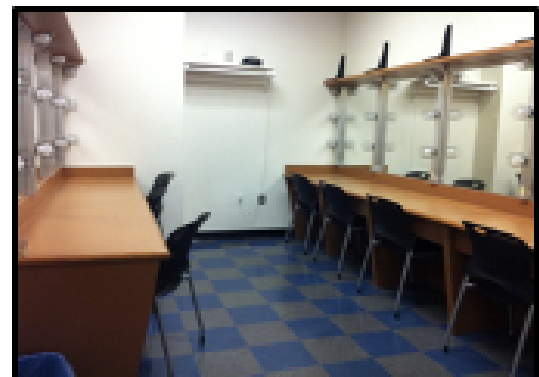
Lockable Dressing Rooms:	
Dressing room 312	8 people
Dressing room 317	2 people
Dressing room 318	8 people
Dressing room 319	2 people
Dressing room 320	8 people
Dressing room 321	2 people
Guest Suite (w/private bath)	1 person
All dressing rooms and green room include audio and video stage monitoring and paging	
Showers	
Green Room	2
Guest Suite	1
Wardrobe	
Washers	2
Dryers	2
Steamer	1
Irons/Ironing Boards	2
Clothing Racks	8
Sewing Machine	1
Serger	1
Sink	1
Spinner (delicates)	1
Green Room	
Located backstage, upstage left	
Tables	1+
Chairs	6+
Couches	3+
Kitchen	
Microwave	1
Oven/Stove (electric)	1
Refrigerator/Freezer	1
Rehearsal Room (Studio 104)	
Dimensions	47'x34'
Floor	Harlequin
<i>See Studio 104 Section for details</i>	
Gym	
The theater has no workout facility.	
Wifi / Internet Access	
Username and Password will be provided at the start of the presented engagement.	



2 Person Dressing Room



Green Room



8 Person Dressing Room

SEATING CAPACITY AND STAGE DIMENSIONS

Permanent Seating Capacity	463	
Orchestra Seats	288	
Mezzanine Seats	175	
“Presidential Seats” (side seating chairs)	36	
Usual Seating Capacity	463	
Add Presidential Seating	499	
Add Pit Cover and Presidential	534	
<i>Additional Standing Room Capacity is available for some engagements</i>		
<i>35 Orchestra Pit cover seats available for some engagements. Please inquire for more information</i>		
STAGE DIMENSIONS		
Proscenium	Imperial	Metric
Max Opening Width	47’7.25”	14.5m
Max Opening Height	24’2.5”	7.4m
Minimum Width (false legs)	39’10”	12.1m
Min Height (False Header)	18’5”	5.6m
Apron*		
Depth	3’	0.9m
Widest Width	12’6”	3.8m
*with orchestra pit at deck level		
Orchestra Pit		
Length	39’	11.9m
Widest Width (CS)	9’4”	2.8m
Narrowest Width (SR&SL)	39’10”	12.1m
Travel Distance (stage down)	10’0”	3.05m
Max Load (moving)	5,500lbs	7030kg
Max Load (stationary)	46,000lbs	20,865kg
NOTE: Orchestra Pit Cannot be moved in performance		
Stage Left Wing		
Width (with Obstructions)	50’	15.2m
Depth	40’	12.2m
Stage Right Wing		
Width (with Obstructions)	52’	15.8m
Depth	40’	12.2m
There is a cross-over available upstage of the back wall of the stage		
Stage		
Total Width (Sprung)	71’4”	21.8m
Total Depth	40’	12.2m
Freight Elevator		
Max Door Width	7’	2.13m
Elevator Width	8’	2.43m
Length	10’	3.04m
Height	15’6”	4.72m
Max Load	7000lbs	3174kg
Stage Floor	Imperial	Metric
Sprung Stage Floor	Harlequin	
Stage Facing Material	Masonite	
Dist. From plaster line		
Back of House	-49’7”	-15.1m
Edge of Orchestra	-13’1.25”	-4m
Edge of stage	-3’7”	-1.1m
Front of proscenium	-2’	-0.6m

Fire Curtain	+3”	0.076m
US Edge of Pocket	+8.25”	0.21m
False Hard Header	+1’3”	0.38m
False Hard Legs	+1’11”	0.58m
Main Curtain (black)	+2’7”	0.775m
First Available fly bar	+3’11”	1.0m
Last onstage Fly Bar	+39’3”	11.9m
Back Wall	+40’5”	12.3m
Marley Dance Floors		
Harlequin Reversible Pro	Black	TV Gray
Width	6’6.5”	2.0m
Length (6 Rolls)	~65’	~20m
Length (1 Roll)	~52’	~16m
Harlequin Cascade White	White	N/A
Width	6’6.5”	2.0m
Length (6 Rolls)	~65’	~20m
Length (1 Roll)	~52’	~16m
ROUGH Shows (scuffed)	Black	White
Width	62”	1.57m
Length (6 rolls)	~65’	~19.8m
Length (1 roll)	~55’	~16.76m
Loading Dock		
Capacity of East Bay	54’	16.4m
Capacity of West Bay	33’	10m
Height Limit*	13’6”	4.1m
*13’6” Height is possible with large trucks after axles are moved and suspension lowered.		
· Hydraulic dock plate available (East Bay).		

FLY SYSTEM

FLY SYSTEM		
<i>The Kasser Theater is equipped with a double purchase counterweight system with fly rail located stage right one level above stage deck (25'5" or 7.7m). Operation of fly system is restricted to Kasser Theater Employees only</i>		
# Fully Flexible line sets	46	
Add'l line sets for Proscenium header and legs, main drape and movie screen	4	
Batten Pipe (Steel)	1.5"	Sch 40
Batten Pipe Length	52'	15.85m
High Batten Trim	48'	14.63m
Batten Travel Distance	42'	12.8m
Arbor Capacity	2000lb	900kg
Max Load		
Line Set System Pipes	750lbs	340kg
SL/SR Ladder Systems	250lbs	113.4kg
Lift Lines per lineset	5	
Height from Deck to Grid	52'	15.85m
Pin Rail Locations	SR	SL
Acoustic Ceiling Panels		
<i>3 Permanently installed acoustic ceiling panels on electric motors. Each is 11' (3.35m) deep and full stage width</i>		
#1 Distance from plaster line	8'11"	2.7m
#2 Distance from plaster line	21'	6.4m
#3 Distance from plaster line	33'	10.06m

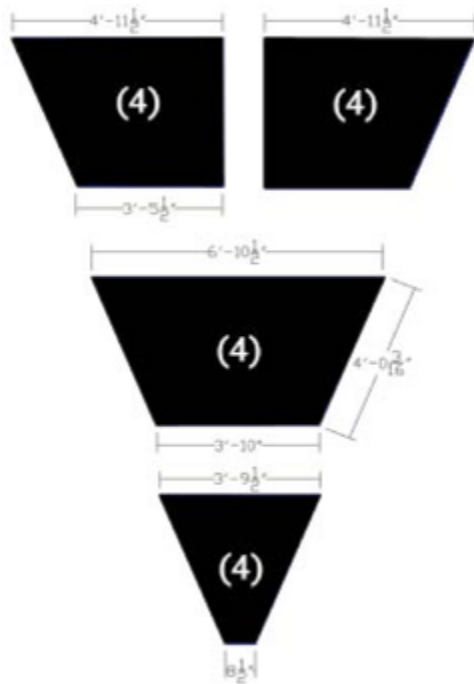
SOFT GOOD INVENTORY

SOFT GOODS				
Count	Width(I)	Height(I)	Width(M)	Height(M)
Black IFR Velour Legs (black velour 25 oz)				
12	12'0"	26'0"	3.7m	7.9m
Black IFR Velour Borders (black velour 25oz)				
5	52'0"	6'0"	15.8m	1.8m
6	52'0"	12'0"	15.8m	3.7m
Plastic White Bounce				
1	52'0"	25'0"	15m	6.9m
Black Sharkstooth Scrim				
2	52'0"	26'0"	15.7m	8.1m
White Sharkstooth Scrim				
1	52'0"	26'0"	15.7m	8.1m
White Cotton Cyc				
1	52'0"	25'0"	15m	6.9m
White Cotton Leno-Filled Scrim				
1	52'0"	26'0"	15.8m	7.9m
Flat Black Full Stage Drop (0% fullness)				
1	60'0"	26'0"	18.3m	7.9m
Black Main Curtain (0% fullness)				
1	60'0"	26'0"	18.3m	7.9m
Flat Black Sidetabs (German Masking)				
12	7'0"	20'6"	17.1m	6.2m
Full Black Travelers (black velour 25oz)				
2	56'0"	20'6"	17.1m	6.2m
Full Red Traveler (decorative red velour 28 oz)				
1	50'0"	22'0"	15.2m	6.7m
<i>2 pcs, red. Travel or guillotine</i>				
Reserved Drape (red velour 28 oz)				
1	50'0"	22'0"	15.2m	6.7m
<i>1pc, red, bottom gold fringe, guillotine, seam in the center, not movable and operated from SR floor</i>				



PLATFORM INVENTORY

PLATFORM INVENTORY	Units
Wenger Signature 4-Step Choral Risers	11
4' by 8' Wenger Versalite Platforms	20
3' by 8' Wenger Versalite Platforms	20
4' by 4' Wenger Versalite Platforms	1
Wenger Versalite Angled Platforms	16
Triangle	4
Symmetrical Trapezoid	4
Left Corner Trapezoid	4
Right Corner Trapezoid	4
6" Wenger Platform Legs (makes 8" tall platform)	88
14" Wenger Platform Legs (makes an 16" tall platform)	60
22" Wenger Platform Legs (makes 24" tall platform)	68
30"-54" Wenger Telescoping Platform Legs (makes a 32"-56" tall platform)	82



CHAIR INVENTORY

CHAIR INVENTORY	Units
Black Wenger Chairs	123
Adjustable Musician Chairs "Cello Chairs"	12
Wenger Adjustable Wooden Bar Stools	8
Black Conductor / Bass Chairs -Padded seat & backs -Adjustable Height	2
Black Herman-Miller chairs -Armless -Used primarily in Dressing Rooms	30
Black Herman-Miller chairs -Armed -Used primarily in Green Room	20
MUSIC STAND INVENTORY	
Standard Wenger Music Stands	80
Conductor Music Stands --Grey Topped	2
Conductor Music Stand -- Black Soft Fabric Top Cover	1
STAND LIGHTS	
Wenger Electric Stand light 40-watt bulb 6-foot (1.8m) electrical cord	65

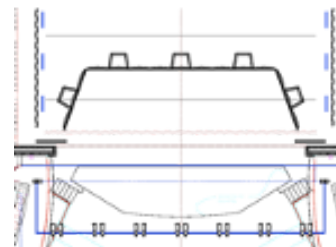


ORCHESTRA SHELL

The shell has a blond wood finish and built in overhead lighting. There are windows in the shell for off stage visibility, and wings that fold up to help with acoustics.

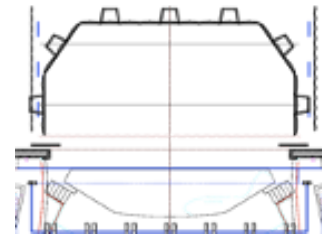
SMALL SHELL SETUP

Width: 41' (12.5m)
Depth (from plaster line): 13'6" (4.1m)
Wall Sections: 5
Ceiling Clouds: 1
 Doors: one single door that is *approximately 4' wide SL* *an SR and double doors US* that are 88" wide.



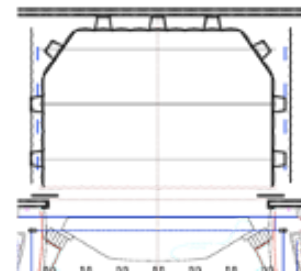
MEDIUM SHELL SETUP

Width: 46' (14m)
Depth (from plaster line): 23' (7m)
Wall Sections: 7
Ceiling Clouds: 2
 Doors: one single door SL and SR and double doors upstage.



LARGE SHELL SETUP

Width 46' (14m)
Depth (from plaster line) 35' (10.67m)
Wall Sections 9
Ceiling Clouds 3
**Doors: It has a single door (DS) and a double door (US) on SL and SR.*



LIGHTING INFORMATION AND INVENTORY [8.4.25]

CONTROL:	#
ETC Gio 3000 Console (Lighting Booth)	1
Touch Screens (On Gio)	3
2x10 Fader Wings	1
2x20 Fader Wing	1
Wireless System Remote (iPad Mini)	1
Portable Client Mac Laptop Control	1
ETC Remote Station: ETC Puck w/ Programming Wing (Tech table / backup)	1
Non Touch Screens (Puck W/ Wing)	2
Ion Classic (Stage)	1
Touch Screens (Ion Classic)	2
*LX and AV consoles set for trigger via midi or OSC	
REPERTORY PLOT INSTRUMENTS:	
ETC Source Four 19-degree - 750w	31
ETC Source Four 26-degree - 750w	25
ETC Source Four 36-degree - 750w	39
ETC Source Four 50-degree - 750w	2
ETC Source Four 15/30 Zoom - 750w	18
ETC Source Four PAR WFL - 750w	20
ETC Lustr II 26-Degree	46
ETC Lustr II 36-Degree	34
ETC D60 Wide Round	30
ETC Source Four Tungsten LED 19-Degree	23
Chroma Q Colorforce II 72+	14
Spotting Light (Balcony Rail Center)	1
LIGHTING INSTRUMENT INVENTORY:	Spare
ETC Source Four Ellipsoidal Fixtures - 750w	100
ETC S4 5-degree tubes	12
ETC S4 10-degree tubes	9
ETC S4 19-degree tubes	40
ETC S4 26-degree tubes	42
ETC S4 36-degree tubes	37
ETC S4 50-degree tubes	28
ETC S4 LED Lustr II	15
S4 LED Cyc Adaptors	10
ETC S4 Tungsten LED	5
ETC D60 Desire	5
*Variety of lenses available upon request.	
Colorado II Zoom	8
ETC S4 25-50 Zooms - 750w	8
ETC Source Four Par - 750w	56
Various lensing: VN5P, NSP, MFL, WFL	
Selecon 2k Fresnels	12
Altman 2k Fresnels	10
Altman 1k Fresnels	20
Arri 5k Fresnels	4
4 Cell Hanging 1kw Cycloramas	7
4 Cell Ground Row 1kw Cycloramas	7
1 Cell Ground/Hanging 1kw Cycloramas	24
4 Circuit MR16 8ft Strip Lights	8

ACCESSORIES:	
S4 Size A Template Holders	33
S4 Size B Template Holders	18
S4 Glass Gobo Holder	7
ETC S4 Drop-In Iris	11
6.25" Top Hats	50
6.25" Half Hats (Short)	7
6.25" Eyelashes	12

6.25" Half Eyelashes (Short)	5
6.25" Ellipsoidal Donuts	51
7.5" Top Hats	18
7.5" Half Hats (Short)	0
7.5" Eyelashes	0
D60 Top Hat	19
D60 Top Hat (Short)	20
D60 Egg Crate	6
D60 Barn Doors	20
S4P Barn Doors	20
5k Fresnel Barn Doors	4
Selecon 2k Fresnel Barn Doors	10
Altman 2k Fresnel Barn Doors	10
INTELLIGENT / SPOTLIGHT / FX:	
Martin Mac Aura XB	6
Atomic Strobes - 208v Power	4
24" Mirror Ball - DMX Motor	1
Robert Juliat MSR 1200 Follow Spots	2
Location: Spot Booth on 3rd Catwalk C/L	
SIDE ARMS / BASES / PIPE / FLOOR PLATE	
18" Side-Arms	45
50lb Base Booms - Altman Cast Iron	14
Cast Iron Floor Plates - 10lbs w/ 1/2" Bolt	24
1.5" Schedule 40 Pipe	Var.*
<i>* Various lengths and quantities of 1.5" black, schedule 40 steel pipe is available. Lengths are commonly: 1ft, 2ft, 3ft, 4ft, 5ft, 6ft, 8ft, 10ft & 21ft.</i>	
ATMOSPHERE GENERATING EQUIPMENT	
MDG Atmosphere Haze Generator	1
DMX / Manual Control/CO ₂ / Fluid Operated	
10 LB Co2 Tank	4
Martin / Jem ZR33 Fog Machine	2
DMX / Manual Control / Fluid Operated	

POWER / DIMMER INFORMATION	
ETC 96 Sensor Rack 2.4kw (60hz)	3
D20E and R20AF Modules Available	
6 x 6000w ETC Sensor Rack (SL Jump)	1
200 Amp Camlock Company Switch @ Dock	1
200 Amp Camlock Company Switch @ SL	1
L6-20 208v Circuits located Stage Left	6
L6-20 208v Circuits located in the Booth	2
L6-30 208v Circuit located in Booth	1
L21-30 circuits (3 each SL & SR on proscenium wall)	6
30 Amp 480v circuits @ SR	2
208v to 220v Transformers available	4
Portable Distribution Boxes:	
L21-30 Input x (6) Breakered 20amp 120v	1
L21-30 Input to (3) Breakered 20amp 208v	1
LED Tape / Low Voltage (12v) Dimmers	
City Theatrical D4HP	2

City Theatrical D4	1
WIRELESS DIMMING	
City Theatrical Show Baby	1
5900 Multiverse Show Baby	1
QolorFlex 5x2.5A 2.4Ghz Multiverse Dimmer	2
DMX DISTRIBUTION	
DSL	U3:U5
DSR	U3:U4
USL	U6:U8
USR	U7:U9
1ST ELECTRIC	U:11
2ND ELECTRIC	U:12
3RD ELECTRIC	U:13
4TH ELECTRIC	U:14
5TH ELECTRIC	U:15
6TH ELECTRIC	U16+17
3 rd CATWALK	U2:U21
2 nd CATWALK	U2:U21
BALCONY	U:31
SINGLE PORT TOURING GATEWAYS	5 AVAIL
NETWORKING	
GRID - 24 WAY POE SWITCH	1
DL - 4 PORT POE SWITCH	1
DR - 4 PORT POE SWITCH	1
UL - 4 PORT POE SWITCH	1
UR - 4 PORT POE SWITCH	1
SPARE - 16WAY POE SWITCH	1
POWER/DIMMER INFORMATION	
<p>*ETC Lighting System runs in Net2 *Distribution drawing available. Please inquire for most up to date drawing for power and data distribution</p>	
REPERTORY LIGHT PLOT	
<p>*Please contact production staff for the latest version of the Lighting plot, Lightwright, and console show file. File available in Vectorworks, Autocad, and PDF.</p>	

AUDIO INFO AND INVENTORY

CONSOLE	
Yamaha CL5 72/24	1
Dante-My16-AUD2	Slot #1
8 Chan. Line Level XLR Input	Slot #2
ADAT (reps connected to Motu)	Slot #3
Dante 3224-D Stage Box (Booth Rep)	1
Dante 1608-D Stage Box (Floating)	1
Dante 8 Channel Output (Booth & Amp Room - Rep)	2
MOTU 828 mk3 FireWire Interface	1
MOTU 828x Thunderbolt Interface	1
<i>Lighting and Sound consoles are set up for communication via midi or OSC</i>	
AUXILIARY CONSOLES	
Yamaha LS9-32/64	1
Ethernet Sound Card	
Ethernet Sound SM168 Stage Box	
8 Chan. Line Level XLR Input	
WiFi Controlled Soundcraft UI-12	2 (1 in 104)
SPEAKERS	
MAIN FOH SYSTEM (D&B POINT SOURCE SYSTEM)	
L,R,C System:	
Y7P	6
Y10P	1
8S Surrounds	20
E5 Front Fills	6
E6 Under balcony delays	2
Flown Cardioid Y-Subs	4
MONITORS/EXTRA SPEAKERS:	
DB Technologies S20 (subwoofer)	2
Meyer UPJunior	4
Meyer UPA-1P	2
Meyer MJF-208	2
EAW JF80 (DS, OH, and Boom Foldback)	10
Meyer UPM-1P	6
DB Technologies DVX DM 12k (Active)---12" foldback	4
RCF 5212C 12" (Passive) (Four in wings)	8
Renkus---Heinz MR5 (Passive - 12")	4
Galaxy Audio PA5X140 (Active) "Hotspot"	2
Galaxy Audio NSPA (Active) "Nano Spot"	3 (2 in gel room)
Anchor Audio AN-1000X (Active)-Monitor	2
QSC K12 12" (Active)	2
QSC KS 118 Subwoofer 18" (Active)	2
WIRELESS IN-EAR:	
Shure PSM200 In-Ear Transmitter	1
Shure Receivers (same single)	2

AMPLIFIERS:	
Crown MacroTech2400	6
QSC 4-Channel Amps (Rep Foldback)	2
AUDIO / VIDEO PLAYBACK / CTL:	
Mac Mini - 2ghz Intel / 16gb Mem Mac OS 10.15 Qlab 5 Connects to MIDI via MOTU At FOH for playback and control	1
Mac Pro (Late 2013) – 3 GHz 8-Core Intel Xeon E5 / 32 GB 1866 MHz DDR3 Mac OS 10.15 Q-Lab 5 / Isadora 2 OSC Router In AV booth for playback, control, or recording	1
Mac Mini Server (Mid 2011) – 2 GHz Intel Core i7 / 16 GB 1333 MHz DDR3 Mac OS 10.13 Q-Lab 4 In AV booth for lobby playback or control	1
Mac Mini (Late 2012) – 2.5 GHz Dual-Core Intel Core i5 / 4 GB 1600 MHz DDR3 Mac OS 10.15 Q-Lab 4 OBS In AV booth for streaming, playback, or control	1
Mac Mini () – Mac OS 10.15 In wireless rack stage left for A2 monitoring and control	1
MacBook Pro (Retina, 15-inch, Mid 2015) -2.8 GHz Quad-Core Intel Core i7 / 16 GB 1600 MHz DDR3 Mac OS 15.6. Q-Lab 4 OBS Vectorworks 2020 (Spotlight & ConnectCAD) In AV booth for streaming, playback, or control	1
STAGE MANAGEMENT / COMM	
Backstage Portable SM Station	1
Time/Clock	1
Clear Com Remote Station w/ Paging	1
32" LCD Monitors mounted SR+SL with a FOH Video Camera Feed	2
44" LCD Monitor on Balcony Rail	1
6 Channel Cue Light System Available 6 lights with 1 control panel	1
COMMUNICATION / INTERCOM	
Clear-Com 4-Chan. Remote station (RM 440) @ Backstage, Tech Table, Booth	3
Freespeak II Base Station	1
Freespeak Wireless Beltpacks	10
Clear-Com (RS-501) belt packs (1 ch)	8
Clear-Com (RS-502) belt packs (2 ch)	1

Clear-Com (CC-95) single muff headsets	8
Clear-Com (CC-250) double muff headsets	1
Clear-Com (HS6) telephones	2
<i>All dressing rooms and green room include audio and video stage monitoring and paging</i>	
<i>Please inquire for most up-to-date information on intercom systems</i>	
MICROPHONES (WIRED)	
Shure SM57	6 (2 in Field PA)
Shure SM58	8
Shure SM58S	3 (VOG)
Shure Beta 58A	4
Shure Beta 57A	8
Shure SM 81	4
Shure Beta 52A	2
Shure VP 88 (stereo)	1
DPA 4099s with various mounts	12
DPA 4098 CORE, Supercardioid, Black, XLR, 47cm Gooseneck	4
DPA 4066 Dual Ear Hook Omni (Beige, Brown, & Black)	Contact for current count
Electro-Voice RE20	1
Audio-Technica AT825A	7
Crown PCC 160	10
Crown PZM---30D	2
AKG 535EB	6
AKG C391B	3 (1 on Balc Rail)
AKG C419	4
AKG C568	1
Neumann TLM 170 r	3
Neumann KM184 ni	6
Sennheiser MD 421---II	4
Sennheiser MD---441	5
Sennheiser e904	4
Sennheiser e906	2
BSS (AR133) direct boxes	7
Radial JPC Stereo PC DI	2

Radial BT-PRO (Bluetooth RX-XLR)	1
Radial USB-PRO (USB to Balanced Audio DI)	1
Radial DAN-TX 2-CH Dante Transmitter	2
Radial DAN-RX 2-CH Dante Receiver	4
Schoeps MSTC 64 U (stereo pair room mike)	1
WIRELESS TRANSMITTERS/RECEIVERS	
Shure AD2 KSM8 Handhelds	12
Shure AD1 Bodypacks w/ Lemo3	6
Shure ADX1M bodypacks	8
AD4Q Axiem Receiver 470-616	6 (1 in field PA)
Sennheiser SK-5212II - (bodypack) Freq: 470-638MHz	8
Sennheiser SK-3063 (bodypack) Freq: 584-607MHz	8
Sennheiser EM3032-U (Dual Receivers)	4
MIC STANDS WITH BOOM ARMS	
AKG KM-259, blk. 92cm - 162cm	10
AKG KM-259, blk. 44cm - 64cm	14
AKG KM-210, blk) 89cm - 63cm	6
Atlas (MS-- -25E) triangle weighted base 95cm - 159cm.	4
MOTOROLA COMMUNICATION EQUIPMENT:	
Various CP200 4-Channel Radios for Stage and Front of House Staff Use.	
FREQUENCY INFORMATION:	
Range MIN	Range MAX
2-Way Mobile Radios:	
451.3125MHz	452.8125MHz
Shure Axiem Wireless	
470MHz	616MHz

VIDEO INFORMATION AND INVENTORY

PROJECTORS	
Panasonic HD 20k Projector (PTDZ21KU)	1
<i>Rep position @ the rear of balcony</i>	
Lens Optics Options:	
-ET-D75LE50 Fixed 0.70:1	1
-ET-D75LE6 Zoom 0.90:1-1.10:1	1
-ET-D75LE10 Zoom 1.30:1-1.70:1	1
-ET-D75LE20 Zoom 1.70:1-2.40:1	1
-ET-D75LE30 Zoom 2.40:1-4.70:1	1
-ET-D75LE40 Zoom 4.60:1-7.40:1	1
Panasonic HD 16K Projector PT-MZ16K	2
- ET-EMS600 1.35-2.10:1	2
- ET-EMT800 4.14-7.4:1	1
VIDEO CONTROL, PROCESSING & RECORDING	
Blackmagic Design ATEM TV Studio Switcher	1
Blackmagic Hyperdeck Studio Mini Ultra HD	4
Blackmagic Design Web Presenter	1
Various Blackmagic SDI to HDMI and HDMI to SDI converters.	Inquire
<i>Venue has both a BNC RG59, HDSDI RG6, and Fiber Optic Patch System available.</i>	
VIDEO MONITORING	
iKan VX9w-S 9" IPS On-Camera Field Monitor with Scopes	1
9" CRT Monitor, B/W, Sony	2
9" CRT monitor, Color, JVC TM-R9U	1
24" CRT Toshiba TV, color	1
27" CRT Sony, TV, color	1
21" LCD Screens for Onstage Conductor Monitoring.	2
<i>Rigging Available for Balcony Rail Attachment</i>	
LG 55" Flat Screens on roving stands	2
<i>All Dressing Rooms, Green Room, Control Booth, and offices have Audio and Video Remote Monitoring of the Stage</i>	
Color Monitoring Cameras	
Marshall CV343-CSB Full-HD (3G-SDI) Compact Broadcast POV Camera	4
<i>Wide & Telephoto lenses available Acts as House Camera throughout facility Installed permanently on FOH Balcony Rail, Lobby, Studio 104, and 1 Spare</i>	
Sony BR-1000 4K PTZ with fiber connection to Broadcast and Media Operations broadcast facility	6



MUSICAL INSTRUMENTS

PIANOS	
Yamaha Concert Grand Piano	1
Steinway D Concert Grand Piano	1
54" Mason & Hamlin Upright Piano	1
Schafer & Sons VS53 Upright (Studio 104)	1
Yamaha CP40 Electric Piano	1
Steinway Model 1098 Upright Piano (Guest Suite)	1
AMPLIFIERS	
Fender '65 Twin Reverb 85w (Reissue)	1
Fender Modern Deluxe	1
Ampeg SVT---3Pro Bass Head	1
Ampeg SVT---410HLF Cabinet	1
Ampeg SVT---15E Cabinet	1
PERCUSSION	
Gretsch "New Classic" Drum Kit <i>(Vintage Marine Pearl, Evans Coated Heads on All Drums)</i>	1
Bass Drum (14" x 18")	1
Rack Tom (8" x 12")	1
Floor Tom (14" x 14")	1
Floor Tom (16" x 16")	1
Snare Drum (5 ½" x 14")	1
DW High---Hat Stand	1
Cymbals Stands	3
DW5000 Kick Pedal	1
Drum Throne	1
Snare Stand	1
Glockenspiel - Yamaha Deagen No 1590	1
Yamaha Vibraphone YV3710	1
Yamaha Marimba YM5104A	1
Yamaha Timpani's 5 Drum Set TP7300 or TP6300	5
Large Gong - Unbranded	1
Medium Gong - Zildjian	1
Pearl - Concert Bass	1
Yamaha Xylophone YX350a	1
Yamaha Chimes DC9190	1
Percussion Accessory Table	2

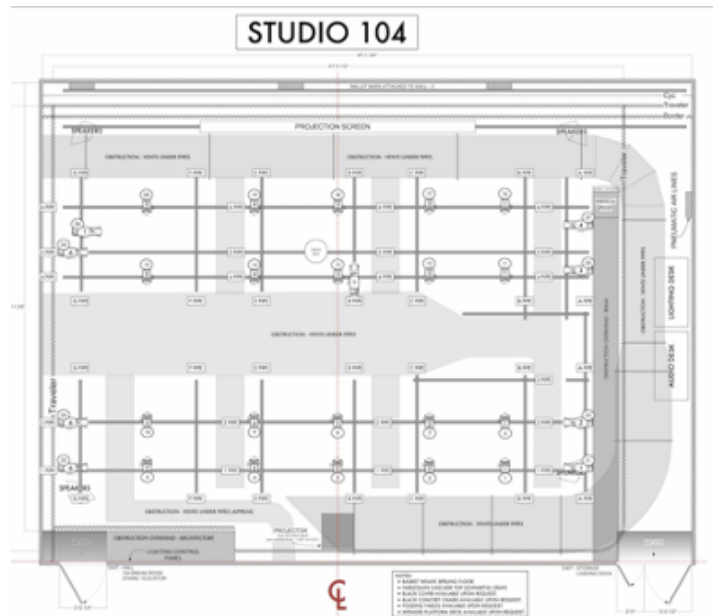
RIGGING/SHOP

CHAIN MOTORS	
CM LodeStar Model-F	4
½ Ton, 16' per minute, 60' lift,	
208V - 30amp Power	
Motion Laboratories Power Distribution and Control System	
TRUSS TOMCAT CORE TRUSS	
10' x 12" x 12" Lengths	8
8' x 12" x 12" Lengths	2
4' x 12" x 12" Lengths	2
1' x 1' x 1' 4-way corner blocks	4
10' x 20.5" x 20.5" Lengths	2
8' x 20.5" x 20.5" Lengths	1
<i>All necessary hardware for assembly</i>	
<u>Scene/Fabrication Shop Information Available Upon Request</u>	

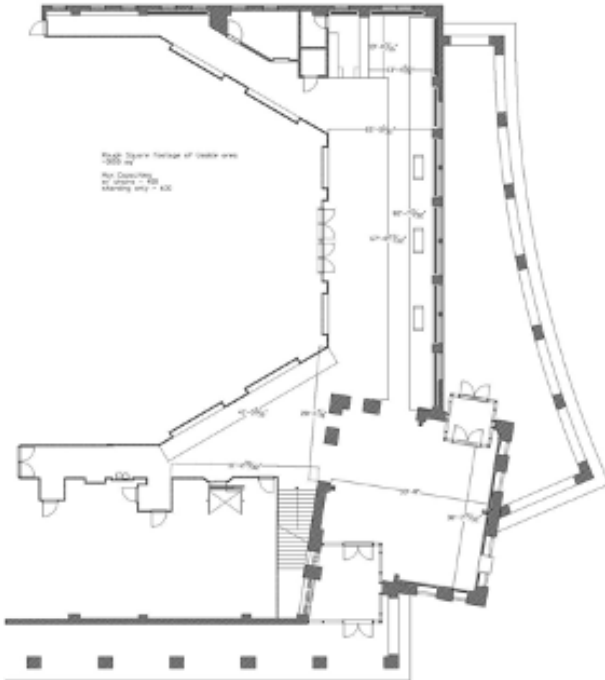
STUDIO 104

Studio space available for warm ups, classes, or rehearsal space.

FACILITY
Harlequin installed Cascade gun metal gray sprung marley floor dance surface* *black marley covering available for tough use projects / events
Adjustable height dance barres along the far wall.
Black Velour Travelers along each wall - Can be moved via installed curtain tracks
PROJECTION
Retractable Da-Lite Cinema Tensioned Cosmopolitan Projection Screen
Sony Laser VPL-FHZ65 6000 Lumens Projector (Lens: 1.39 to 2.31)
SOUND SYSTEM
Soundcraft UI16 Mixer Wifi Controlled Digital Mixer
(2) Crown Macro Tech 2400 amps
(8) Reinkus Heinz Speakers (4) clusters of (2) (room can turn 90 degrees in rep)
LIGHTING
(20) ETC ColorSource PARs
(9) ETC ColorSource Spots @ 50 degrees
ETC Echo Touch lighting control
ROOM CAPACITY
w/tables & chairs (dining) - 72
w/chairs - 70-96 depending on layout
Standing only - 21



KASSER LOBBY



More Information available upon Request

AMPHITHEATER

Historically:

“The federal Works Progress Administration constructed an amphitheater for what was then known as Montclair State Teachers College. The 2,000-seat theater was constructed into a hillside, its 22 tiers of seats measuring between 92 and 190 feet long. The stage, at construction, measured 70 feet by 40 feet and contained a tree in the middle. An orchestra pit in front of the stage measured 70'-by-30’.”

Playing Area: 65' 7" wide x 33'5" deep

**Brief Lighting Info: Two stage towers both house 3 LED flood lights
Audience towers hold 1 LED flood on left and right tower
Front of house holds 4 halogen 1000w bulbs on left and right tower
3x 96 etc dimmer rack w/ socko allocated to space**

Brief Power Info: Coming Soon

**Alexander Kasser Theater
Montclair State University**

TRAVEL/DIRECTIONS

Box Office: 973-655-5112

Technical Questions: 973-655-4021

<http://www.peakperfs.org>
For Detailed Directions - Perform a Google Map Search for: “[Alexander Kasser Theater](#)”

www.njtransit.com or call NJ Transit at 973-275-5555 for more information.

GPS DIRECTIONS:

In the right-hand column you will find directions to the Kasser Theater from all points by car and by public transportation. If you are utilizing GPS to visit us, please use the following information when entering directions into your GPS: Enter 22 Normal Avenue, Montclair, NJ 07043. This will take you to the entrance of the campus. Turn right off of Normal Ave. on to campus, the Kasser Theater and Red Hawk parking deck will be directly in front of you.

FROM POINTS NORTH:

Take Garden State Parkway to Route 46 West (exit 154). Exit onto Valley Road (south) toward Montclair. *

FROM POINTS SOUTH:

Take Garden State Parkway to Route 3 West (exit 153B). Exit onto Valley Road (south) toward Montclair. *

FROM MIDTOWN MANHATTAN:

Take Lincoln Tunnel to Route 3 West for approximately 10.5 miles. Route 3 will merge to Route 46—stay right. Take first exit immediately after the merge, onto Valley Road (south), toward Montclair. *

FROM UPPER MANHATTAN

Take the George Washington Bridge to Route 80 West. Take Exit 62 to merge onto the Garden State Parkway South. Take Exit 154 for Route 46 toward Clifton. Exit onto Valley Road toward Paterson/Montclair. *

*Once on Valley Road (south) – Stay on Valley Road for one mile to the first traffic light. Turn right onto Normal Avenue. Then make another right into the main entrance of the campus. The Alexander Kasser Theater will be directly in front of you. Convenient parking is available at the Red Hawk Parking Deck adjacent to the theater.

PUBLIC TRANSPORTATION (Bus)

DeCamp Bus Lines runs busses from NY Port Authority, routes 66 and 66R. Travel time is roughly 25 minutes. The first stop on weekdays is Montclair University Bus Stop, which lets you off at the base of the Kasser Theater. On off-times, the bus lets off at Valley Road and Mt. Hebron Road. You must then walk along Valley (cemetery on your right) and make a left onto Normal Avenue. Make a right on College Avenue and head up the hill. Kasser Theater is the building at the top of the hill in front of you. For bus schedules, please check www.decamp.com.

PUBLIC TRANSPORTATION (Train)

(weekdays only)

NJ Transit Railroad is the recommended method of public transportation. Midtown Direct operates between NY Penn Station and Montclair Heights (not Montclair State University) and travel time is approximately 45 minutes. Exit the train at the Montclair Heights Station and walk along Normal Ave towards the campus (you will pass a football field on your left). At the entrance to campus, turn left on College Ave and walk up the hill. Kasser Theater is the building in front of you at the top of the hill. Go to

