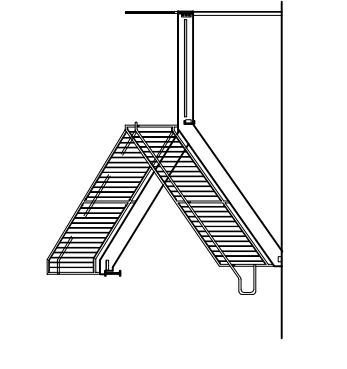


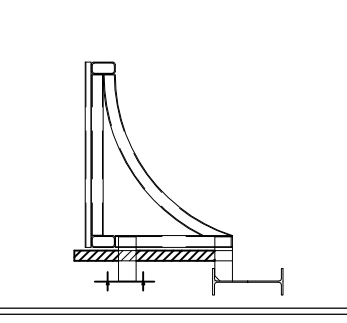
PLAN AT SITE STEPS & RETAINING WALLS  
 SCALE:  $\frac{3}{8}'' = 1'-0''$

**STANDARDS/SPECS.**  
 CLEANING STANDARD  
 FINISH AS NOTED  
 ELECTRODES: E70XX  
 SHOP BOLTS:  $\frac{7}{8}''$  A325 (U.O.N.)  
 OPEN HOLES:  $\frac{1}{2}''$  (U.O.N.)

APPROVER PLEASE NOTE:  
 THIS DRAWING REFLECTS OUR  
 UNDERSTANDING OF THE CONTRACT  
 DOCUMENTS THAT HAVE BEEN  
 DESIGNED BY YOUR FIRM. PLEASE  
 REVIEW CAREFULLY, GIVING SPECIAL  
 ATTENTION TO THE DETAILS AND PLAN  
 VIEWS. IF STAR RISERS HAVE BEEN  
 MOVED FROM ONE RISE TO ANOTHER,  
 IT IS DONE TO CREATE A SMOOTH  
 RAILING TRANSITION AT PLATFORMS  
 AND FLOOR LANDINGS.  
 IF ITEMS ARE NOT MARKED FOR  
 CORRECTION, IT WILL BE ASSUMED  
 THAT IT IS APPROVED FOR  
 FABRICATION. THIS IS SUBJECT TO  
 COORDINATION BY THE G.C. OF ALL  
 TRADES WHOSE PRODUCTS OR ITEMS  
 ATTACH TO OR FIELD VERIFICATION.



**ANVIL CRAFT CORP**  
 MISC. & ORNAMENTAL STEEL FABRICATORS  
 1005 ASPEN STREET  
 EASTON, PA 18042  
 610-250-9600  
© 2011 ANVIL CRAFT CORP.



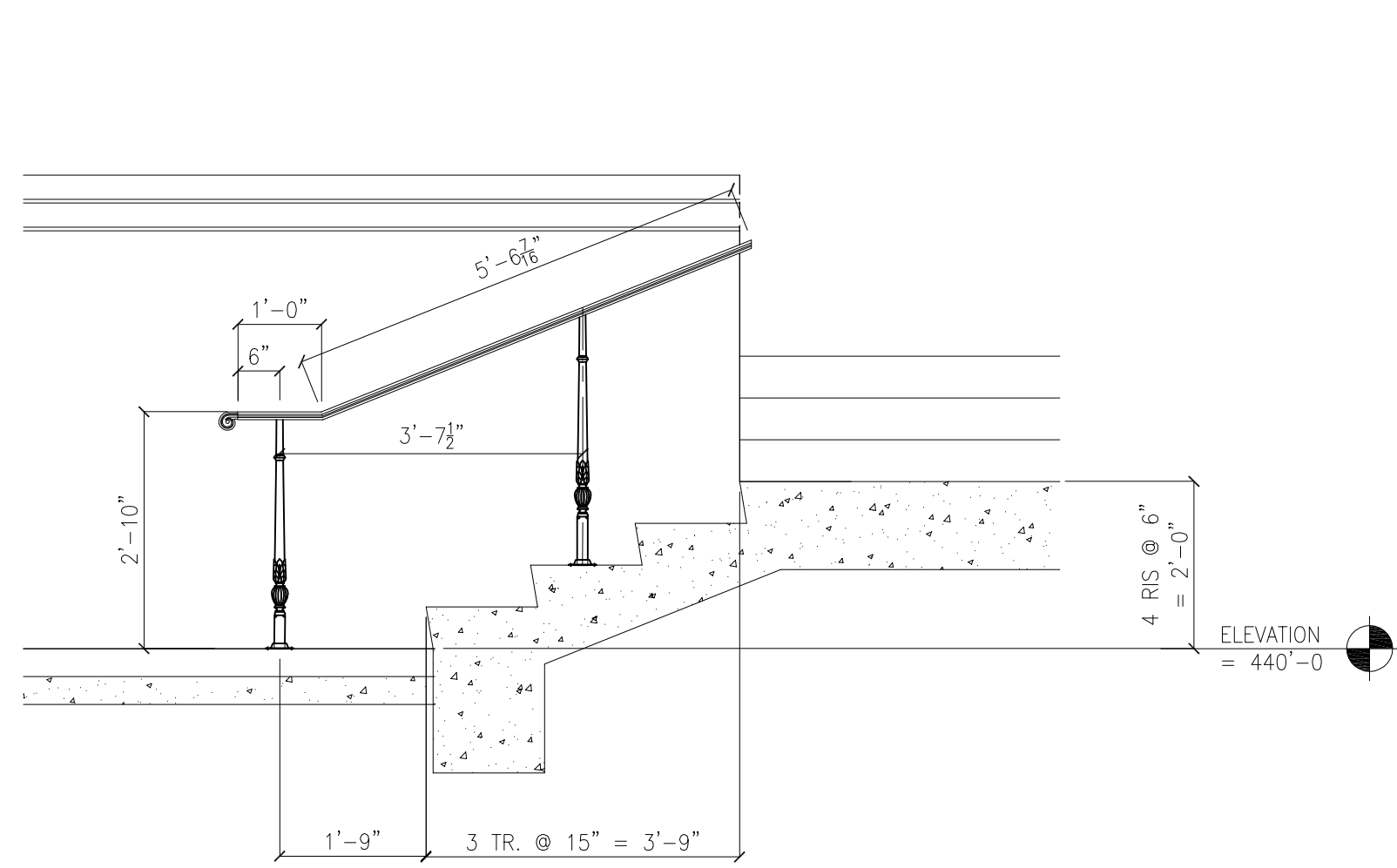
**CUSTOMER:**  
 TERMINAL CONSTRUCTION CORP.  
 215 STATE HWY. 17 SOUTH  
 WOOD RIDGE, NJ 07075  
 PH: 201-939-9150  
 FAX: 201-221-8463

**PROJECT:** PROJECT NO: 07091313  
 MONTCLAIR STATE UNIVERSITY  
 SCHOOL OF BUSINESS  
 PLAN @ CONCRETE SITE STEPS  
 AND RETAINING WALLS

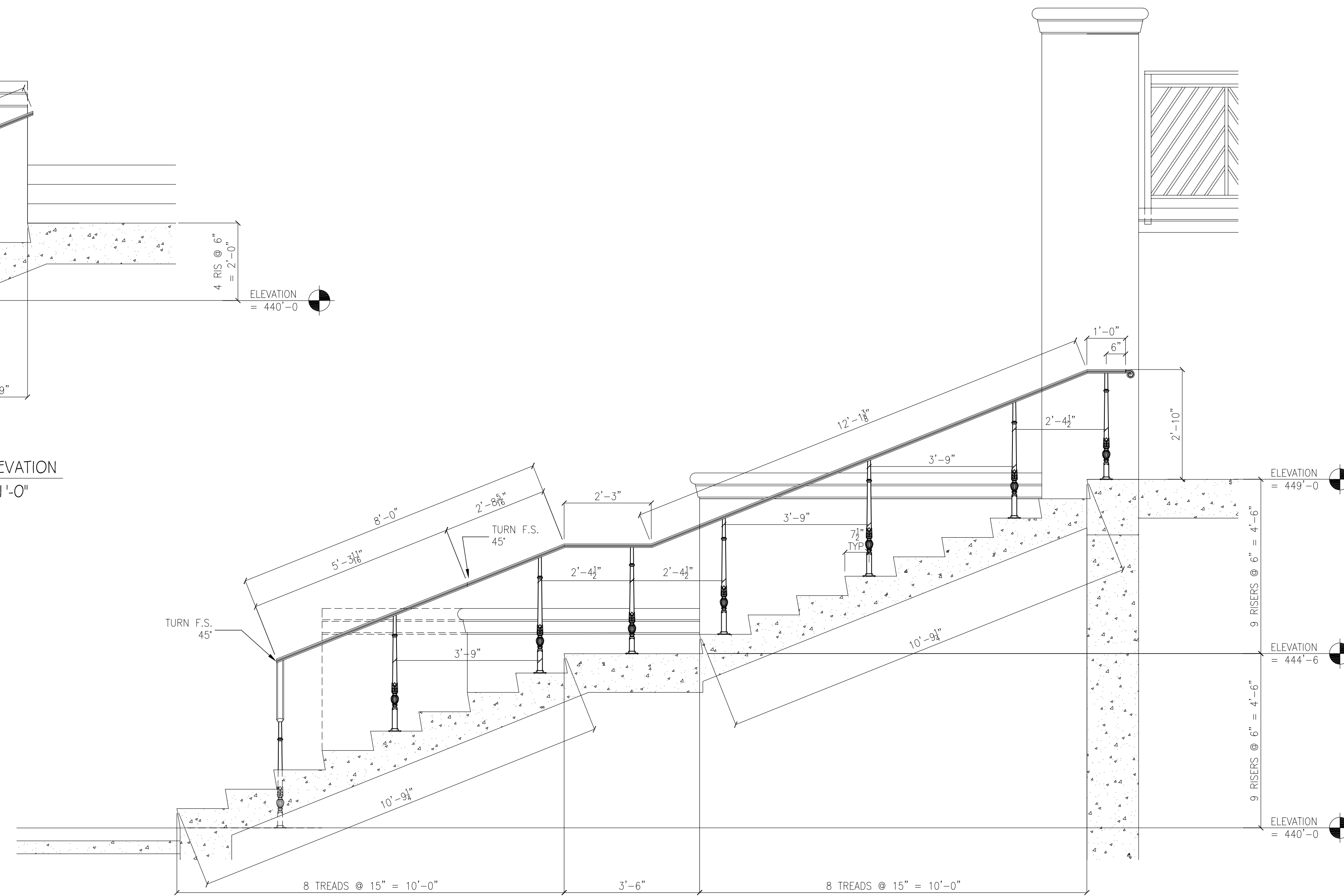
REV.	DATE	BY
△		
△		
△		

**DWN. BY** SS  
**DATE** 03-07-14

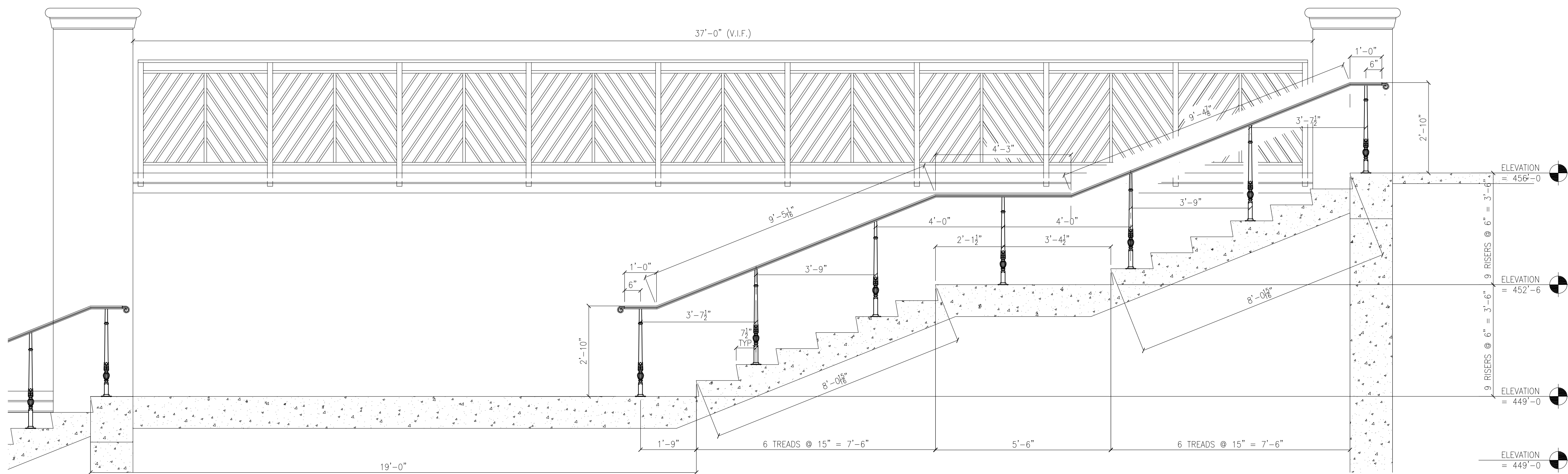
**M-36**



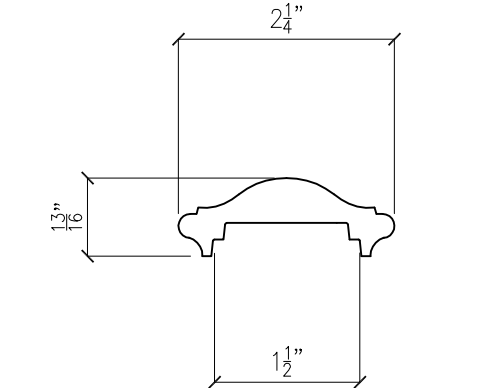
1a HANDRAIL ELEVATION  
SCALE: 1/2" = 1'-0"



1 HANDRAIL ELEVATION  
SCALE: 1/2" = 1'-0"

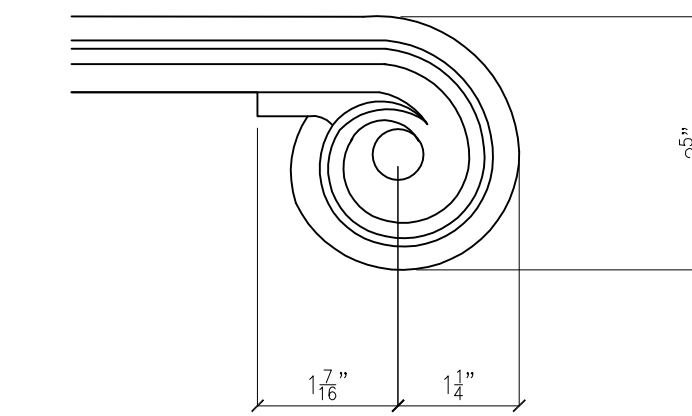


2 HANDRAIL ELEVATION  
SCALE: 1/2" = 1'-0"



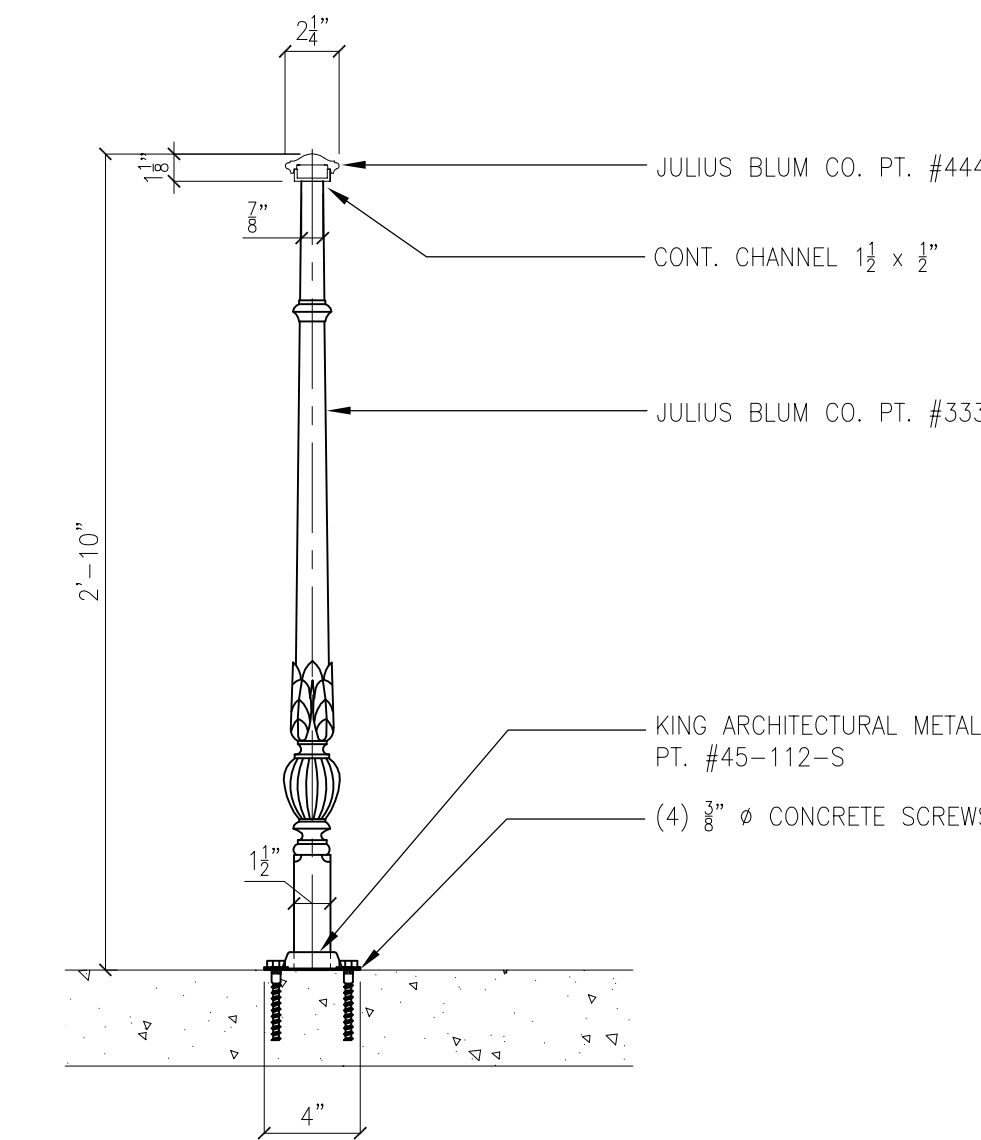
CAPRAIL Moulding  
JULIUS BLUM CO. PT. #4441

4 ENLARGED DETAIL  
SCALE: 3" = 1'-0"

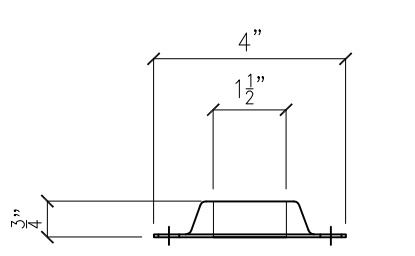
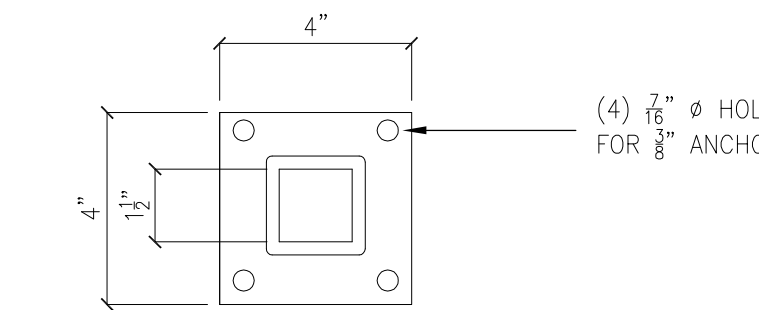


VOLUTE  
JULIUS BLUM CO. PT. #4441V

5 ENLARGED DETAIL  
SCALE: 3" = 1'-0"



3 TYPICAL HANDRAIL SECTION  
SCALE: 1 1/2" = 1'-0"



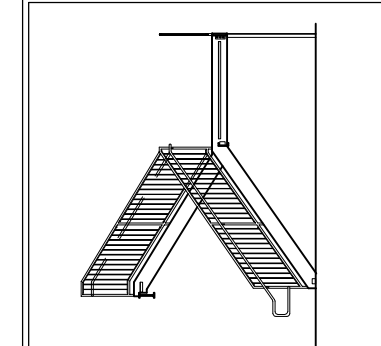
STEEL FLANGE  
KING ARCH. PT. #45-112-S

6 ENLARGED DETAIL  
SCALE: 3" = 1'-0"

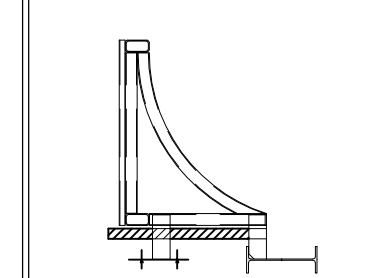
GENERAL NOTES FOR HANDRAILS:  
1) REFERENCE SITE DWGS. LP501 THRU LP-503.  
2) ALL MATERIAL TO BE CARBON STEEL.  
3) ALL STEEL TO BE PAINTED BLACK.  
4) ALL DIMENSIONS TO BE FIELD VERIFIED PRIOR TO FABRICATION.

STANDARDS/SPECS.  
CLEANING: STANDARD  
FINISH: PAINT BLACK  
ELECTRODES: E70XX  
SHOP BOLTS: 1/2" A325 (U.O.N.)  
OPEN HOLES: 1/2" (U.O.N.)

APPROVER PLEASE NOTE:  
THIS DRAWING REFLECTS OUR  
UNDERSTANDING OF THE CONTRACT  
DOCUMENTS THAT HAVE BEEN  
DISCUSSED BY YOUR FIRM. PLEASE  
REVIEW CAREFULLY, GIVING SPECIAL  
ATTENTION TO THE DETAILS AND PLAN  
VIEWS. IF STAIR RISERS HAVE BEEN  
MOVED FROM ONE RISE TO ANOTHER,  
IT IS DONE TO CREATE A SMOOTH  
RAILING TRANSITION AT PLATFORMS  
AND FLOOR LANDINGS.  
IF ITEMS ARE NOT MARKED FOR  
CORRECTION, IT WILL BE ASSUMED  
THAT IT IS APPROVED FOR  
FABRICATION. THIS IS SUBJECT TO  
COORDINATION BY THE G.C. OF ALL  
TRADES WHOSE PRODUCTS OUR ITEMS  
ATTACH TO OR FIELD VERIFICATION.



ANVIL CRAFT CORP  
MISC. & ORNAMENTAL STEEL FABRICATORS  
1005 ASPEN STREET  
EASTON, PA 18042  
610-250-9600  
© 2011 ANVIL CRAFT CORP.



CUSTOMER:  
TERMINAL CONSTRUCTION CORP.  
215 STATE HWY. 17 SOUTH  
WOOD RIDGE, NJ 07075  
PH: 201-939-9150  
FAX: 201-221-8463

PROJECT: PROJECT NO: 07091313  
MONTCLAIR STATE UNIVERSITY  
SCHOOL OF BUSINESS  
HAND RAILINGS @ CONCRETE  
SITE STEPS  
ELEVATIONS, SECTION & DETAILS

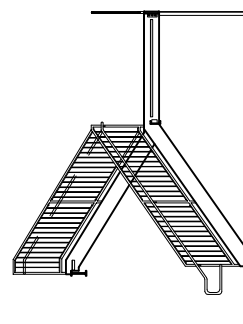
REV.	DATE	BY
△		
△		
△		

DWN. BY: SS  
DATE: 03-07-14

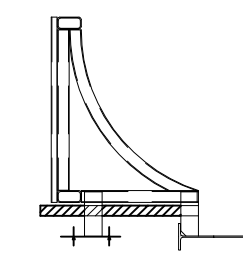
M-37

STANDARDS/SPECS.  
 CLEANING STANDARD  
 FINISH PAINT BLACK  
 ELECTRODES: E70XX  
 SHOP BOLTS: 7/8" A325 (U.O.N.)  
 OPEN HOLES: 1/2" (U.O.N.)

APPROVER PLEASE NOTE:  
 THIS DRAWING REFLECTS OUR  
 UNDERSTANDING OF THE CONTRACT  
 DOCUMENTS THAT HAVE BEEN  
 DISCUSSED BY YOUR FIRM PLEASE  
 REVIEW CAREFULLY, GIVING SPECIAL  
 ATTENTION TO THE DETAILS AND PLAN  
 VIEWS. IF STAR RISERS HAVE BEEN  
 MOVED FROM ONE RISE TO ANOTHER  
 IT IS DONE TO CREATE A SMOOTH  
 RAILING TRANSITION AT PLATFORMS  
 AND FLOOR LANDINGS.  
 IF ITEMS ARE NOT MARKED FOR  
 CORRECTION, IT WILL BE ASSUMED  
 THAT IT IS APPROVED FOR  
 FABRICATION. THIS IS SUBJECT TO  
 COORDINATION BY THE G.C. OF ALL  
 TRADES WHOSE PRODUCTS OUR ITEMS  
 ATTACH TO OR FIELD VERIFICATION.



ANVIL CRAFT CORP  
 MISC. & ORNAMENTAL STEEL FABRICATORS  
 1005 ASPEN STREET  
 EASTON, PA 18042  
 610-250-9600  
 © 2001 ANVIL CRAFT CORP.



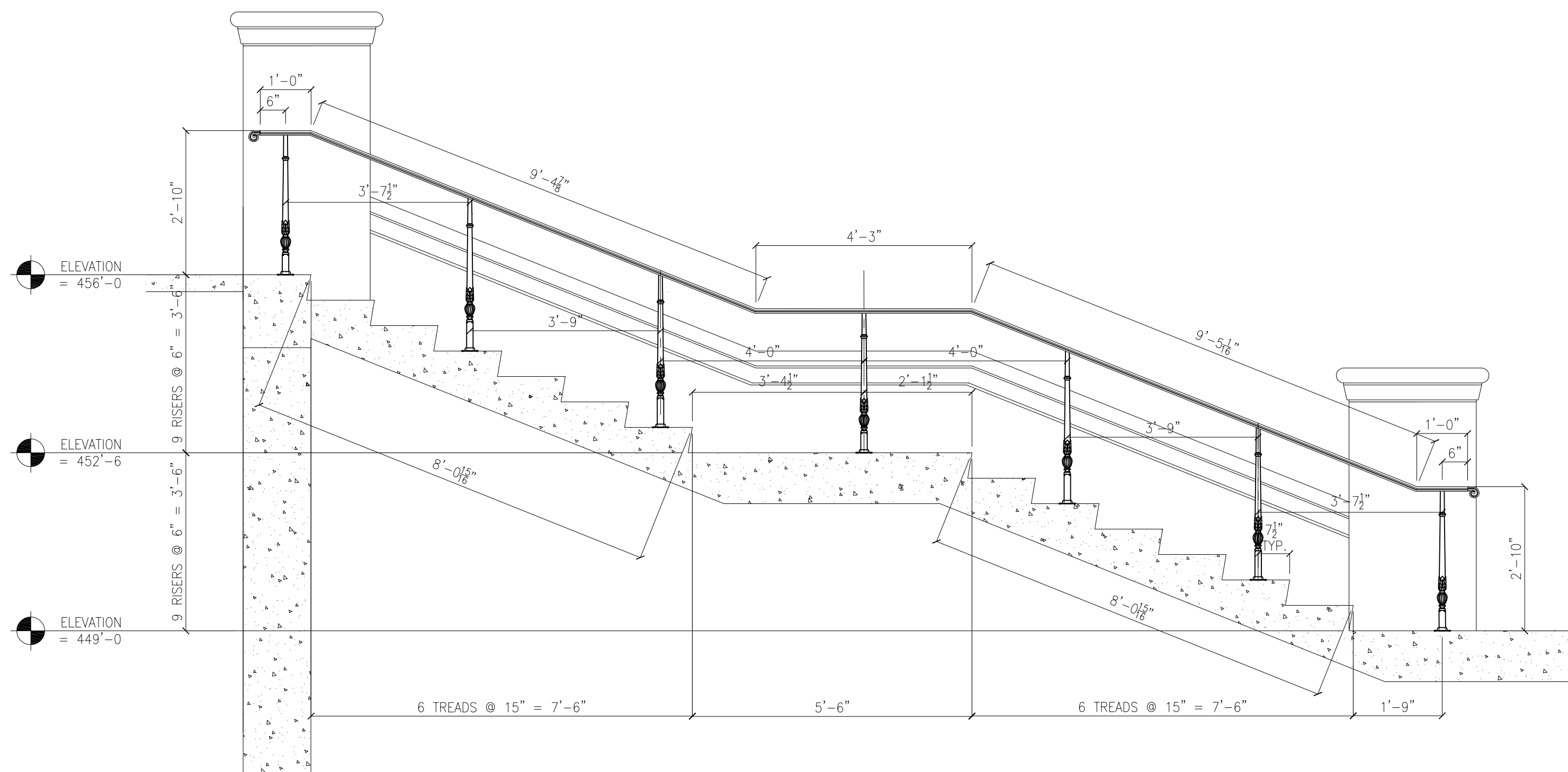
CUSTOMER:  
 TERMINAL CONSTRUCTION CORP.  
 215 STATE HWY. 17 SOUTH  
 WOOD RIDGE, NJ 07075  
 PH: 201-939-9150  
 FAX: 201-221-8463

PROJECT: PROJECT NO: 07091313  
 MONTCLAIR STATE UNIVERSITY  
 SCHOOL OF BUSINESS  
 HANDRAILS @ CONCRETE SITE STEPS  
 ELEVATIONS

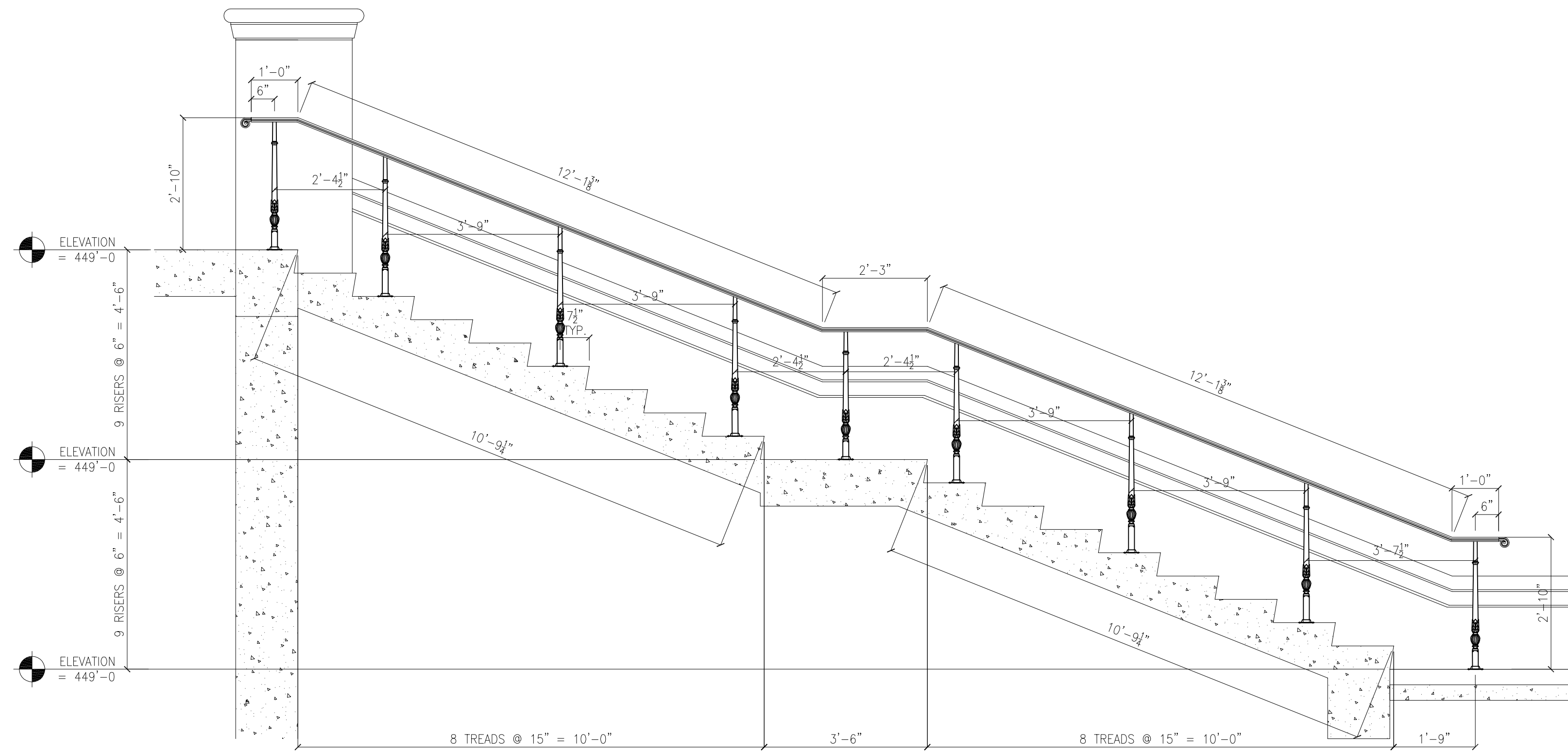
REV.	DATE	BY
△		
△		
△		

DWN. BY: SS  
 DATE: 03-07-14

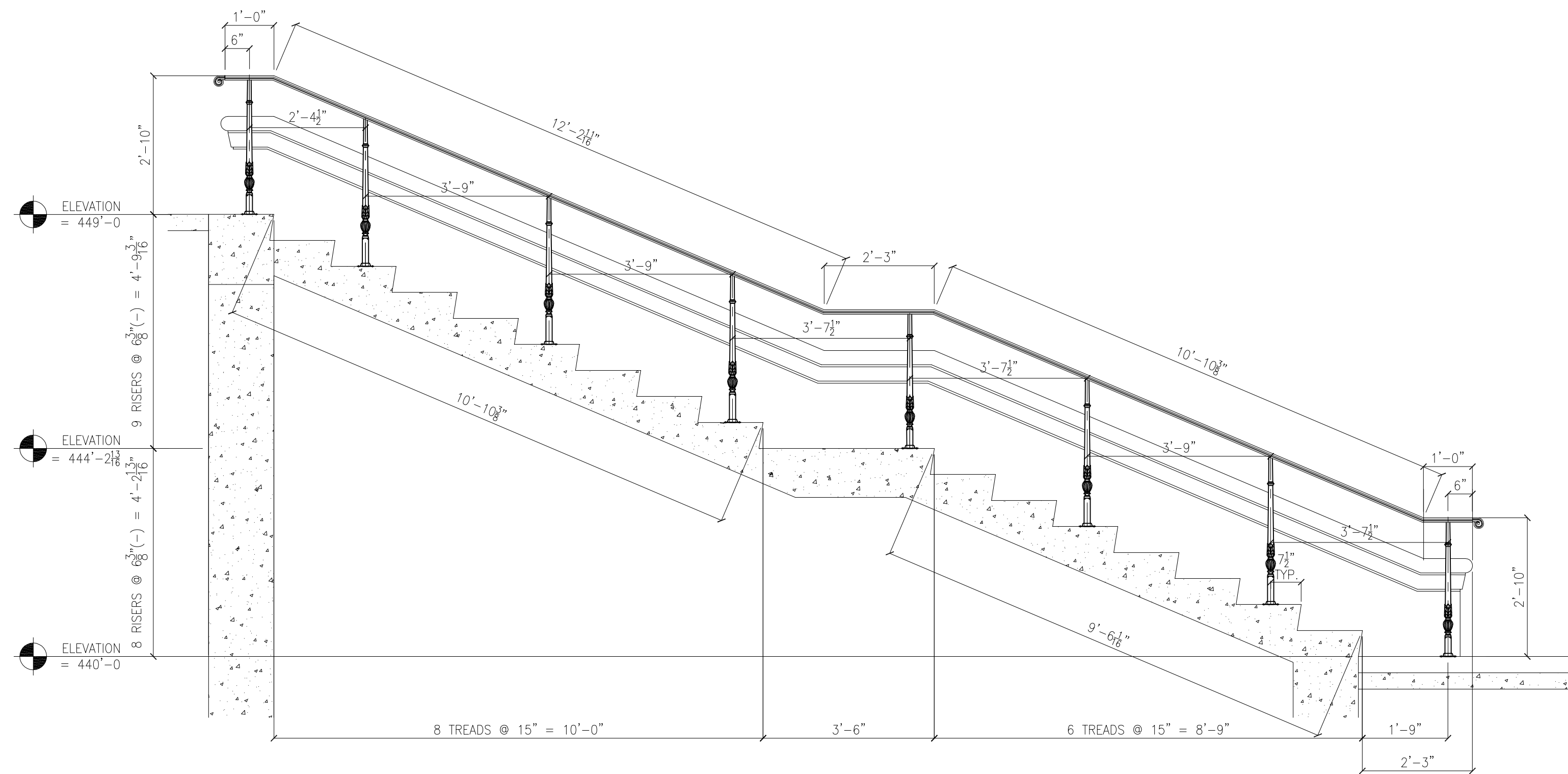
M-38



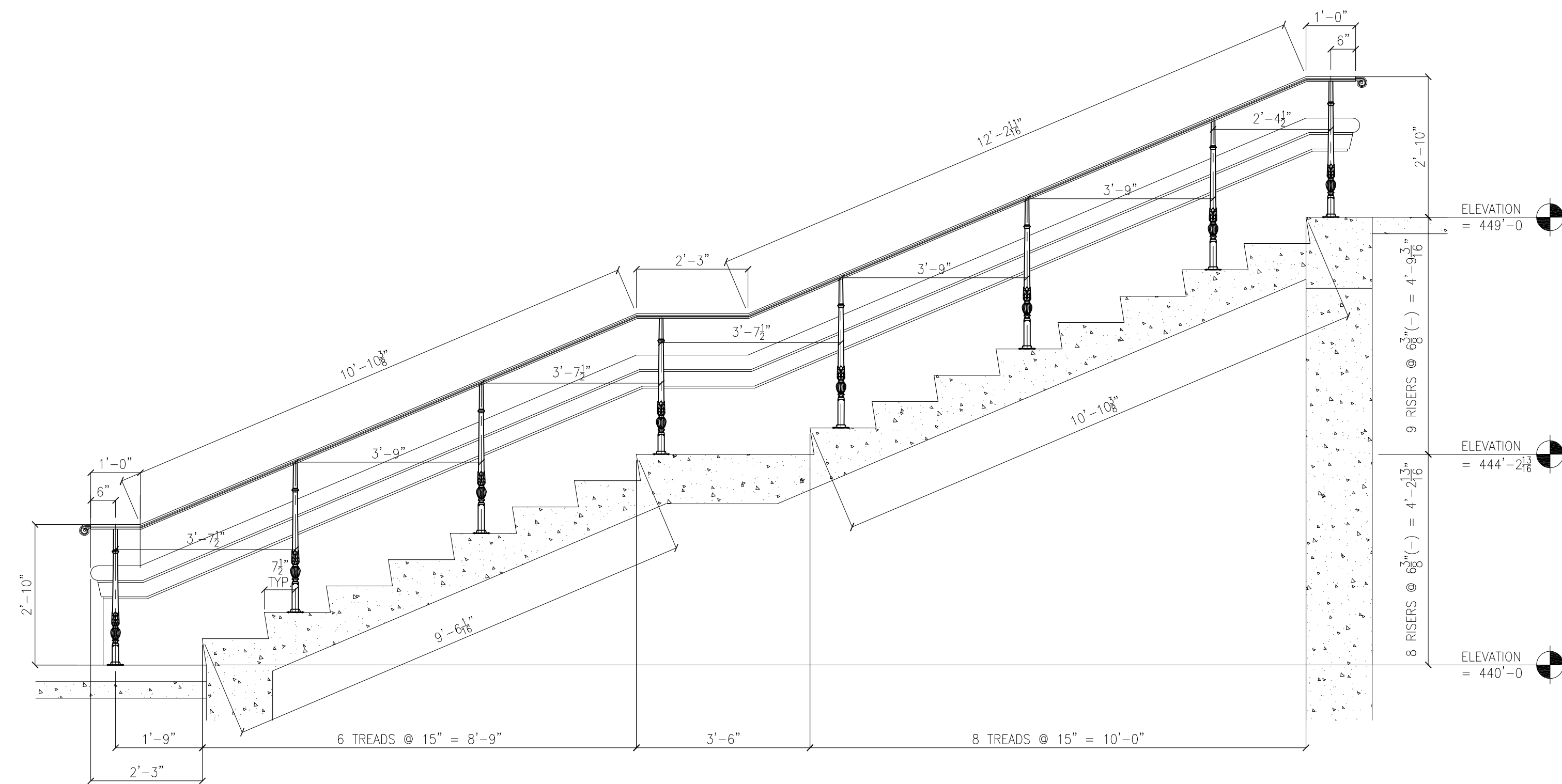
2 HANDRAIL ELEVATION  
 SCALE: 1/2" = 1'-0"



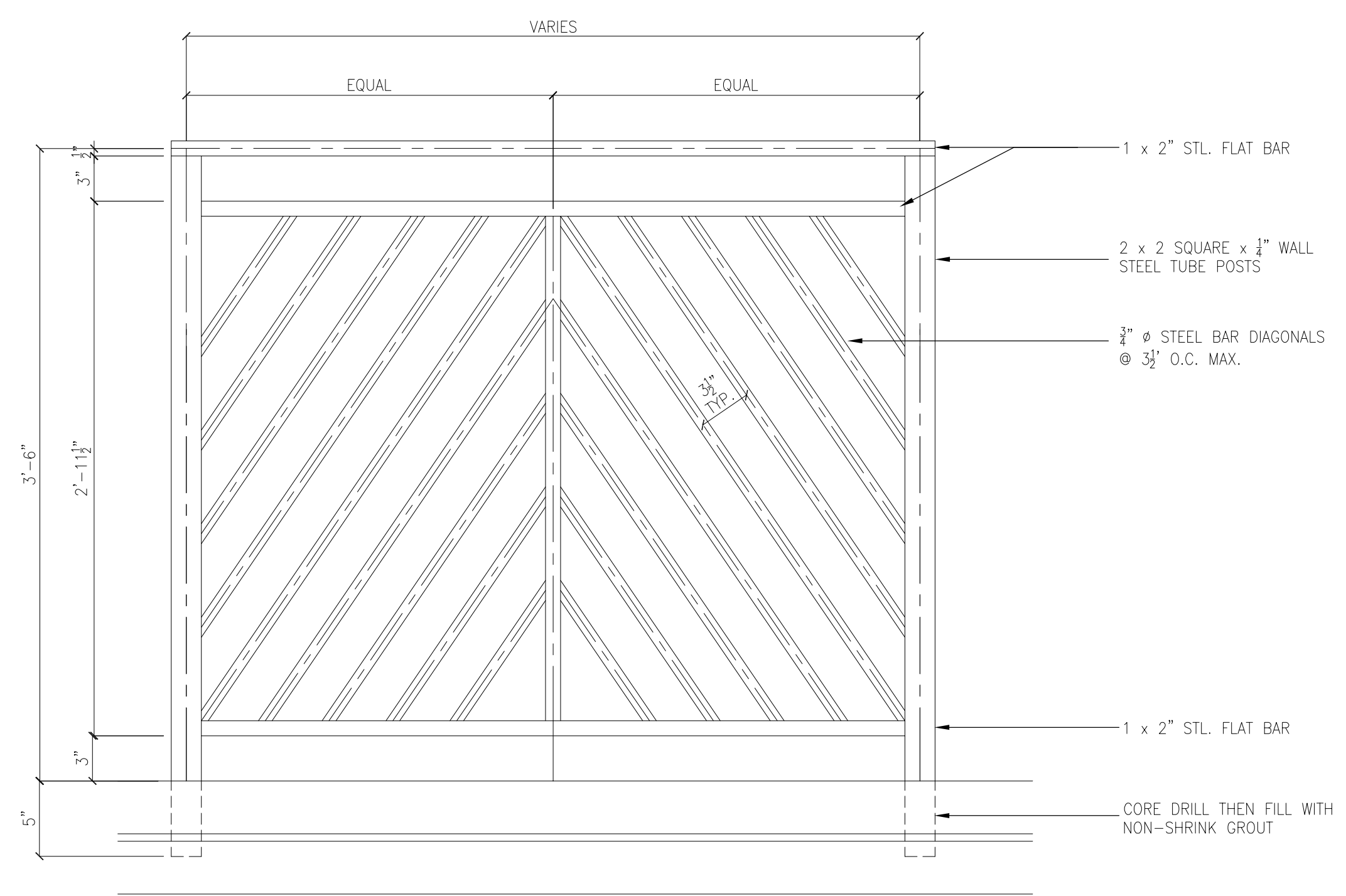
1 HANDRAIL ELEVATION  
 SCALE: 1/2" = 1'-0"



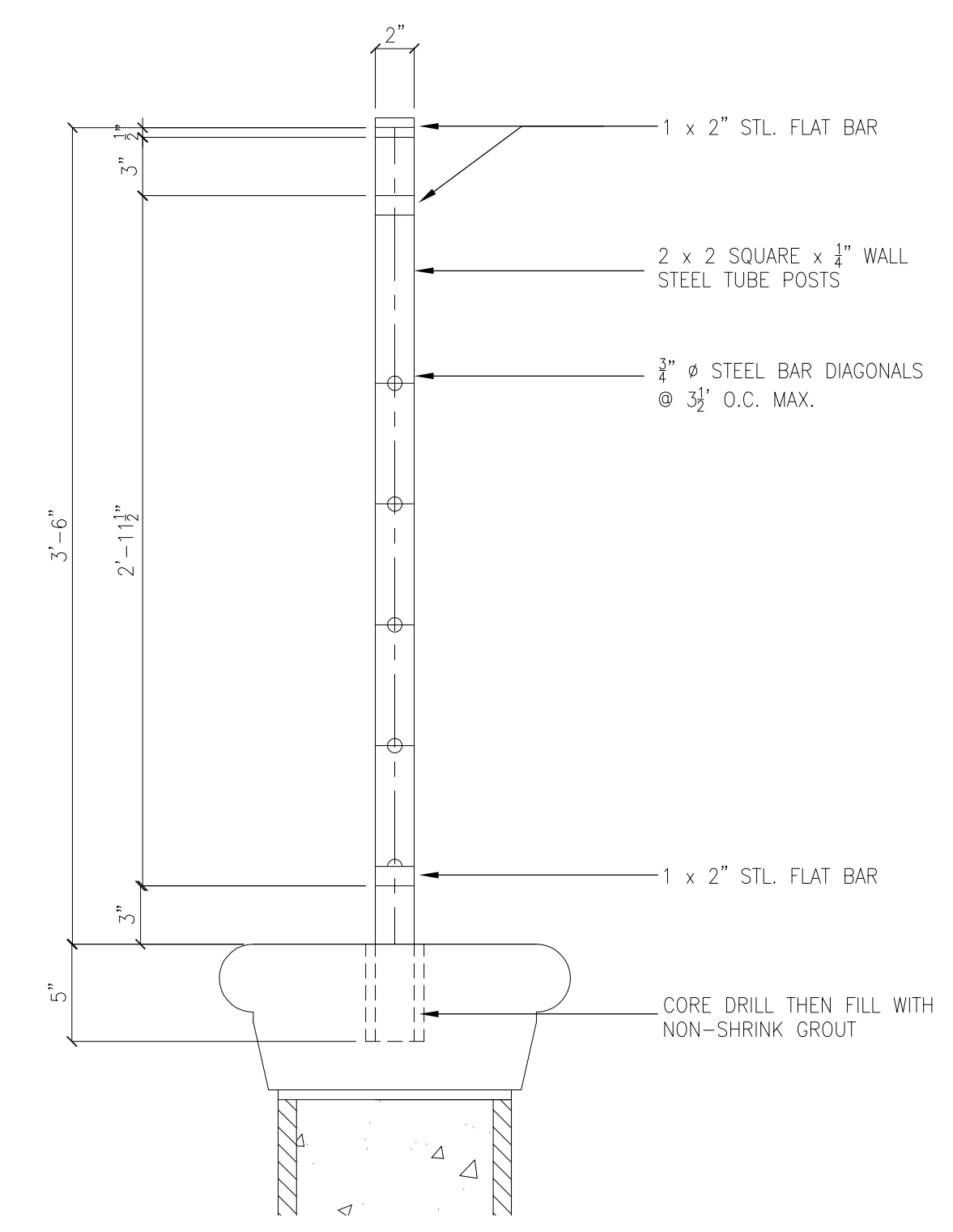
3 HANDRAIL ELEVATION  
 SCALE: 1/2" = 1'-0"



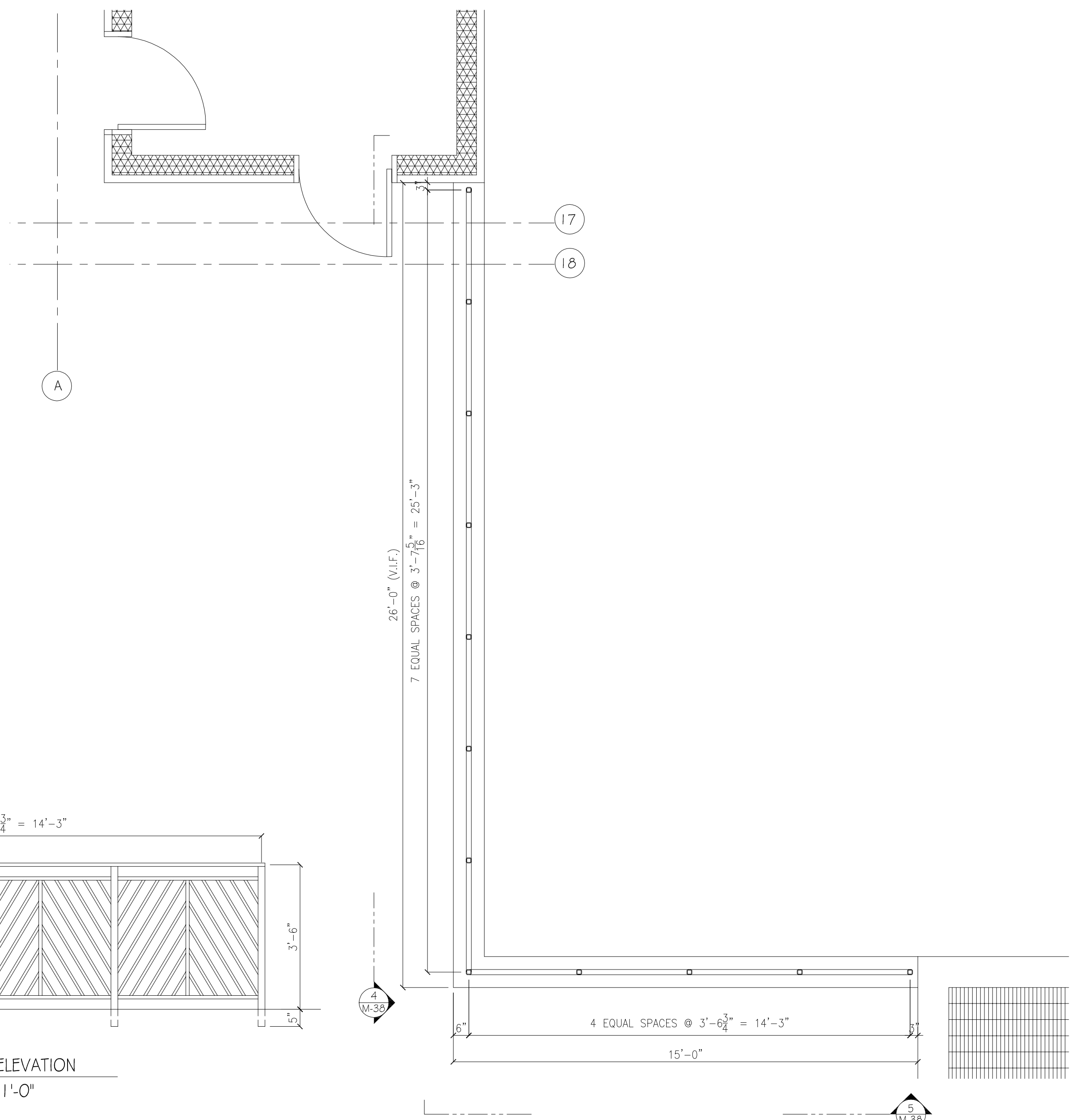
4 HANDRAIL ELEVATION  
 SCALE: 1/2" = 1'-0"



3 TYPICAL GUARDRAIL ELEVATION  
SCALE: 1/2" = 1'-0"

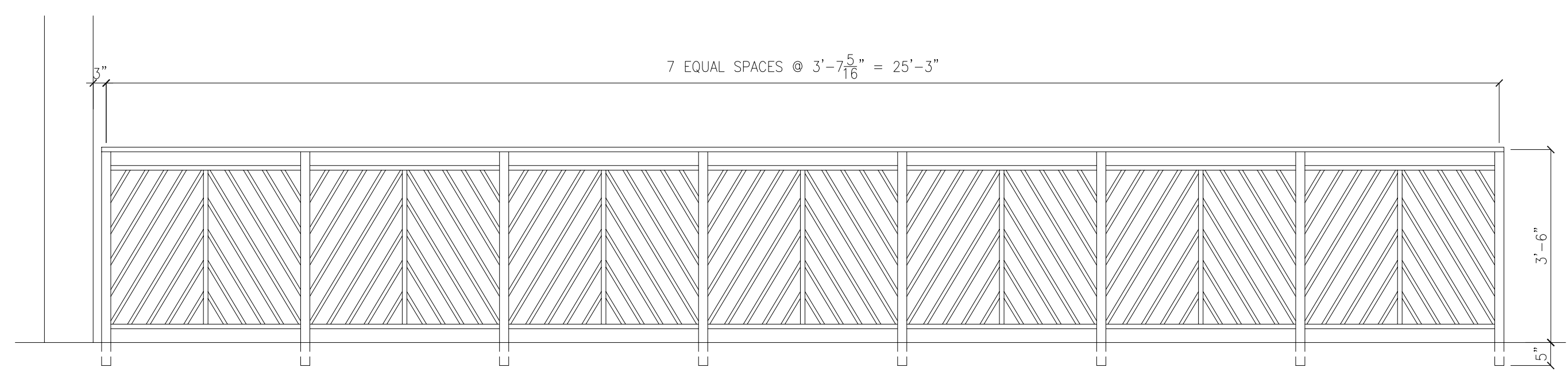


2 TYPICAL GUARDRAIL SECTION  
SCALE: 1/2" = 1'-0"

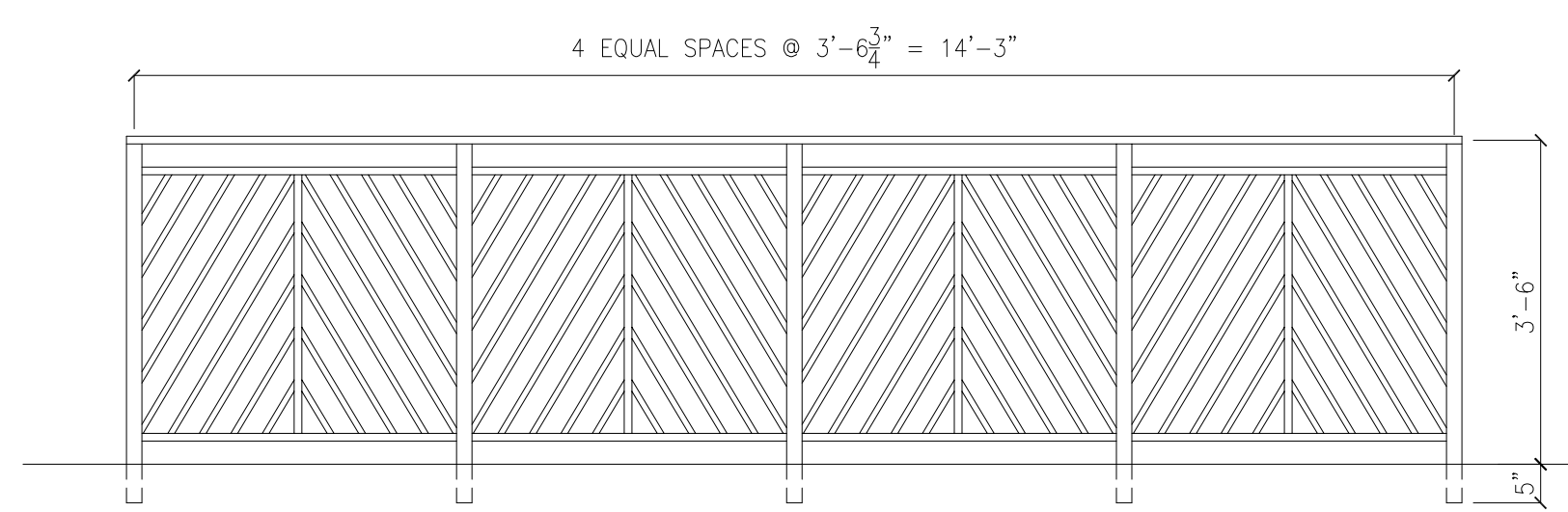


1 PLAN AT SITE RETAINING WALLS  
SCALE: 3/8" = 1'-0"

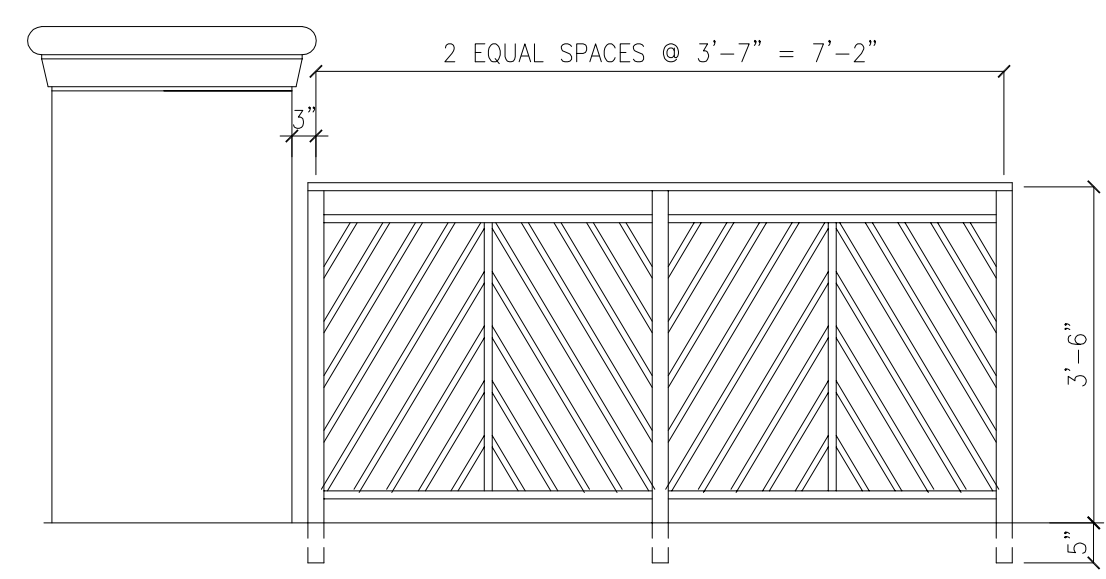
GENERAL NOTES FOR RETAINING WALL GUARDRAILS:  
 1) REFERENCE SITE DWGS. LP501 THRU LP-503.  
 2) ALL MATERIAL TO BE CARBON STEEL.  
 3) ALL STEEL TO BE HOT DIP GALVANIZED.  
 4) ALL DIMENSIONS TO BE FIELD VERIFIED PRIOR TO FABRICATION.



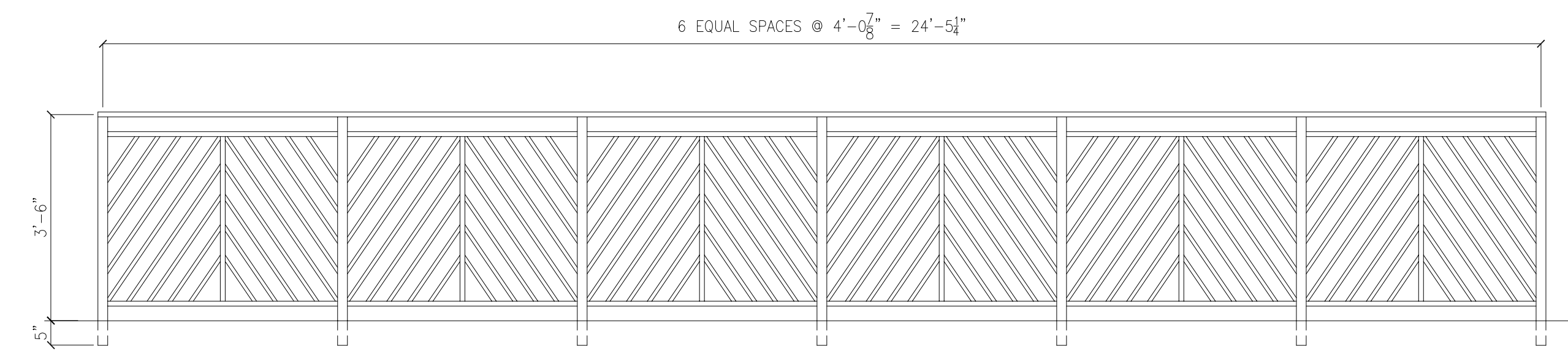
4 GUARDRAIL ELEVATION  
SCALE: 1/2" = 1'-0"



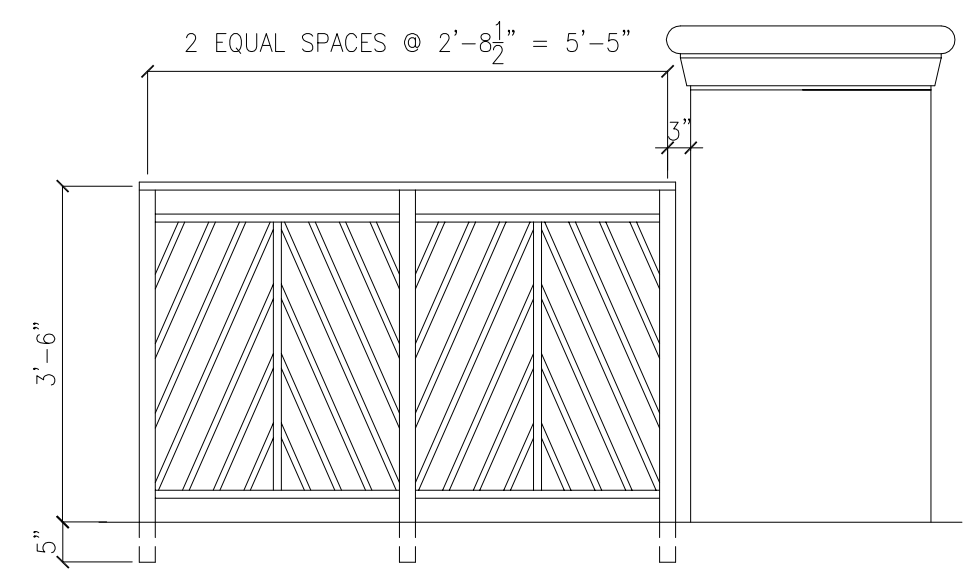
5 GUARDRAIL ELEVATION  
SCALE: 1/2" = 1'-0"



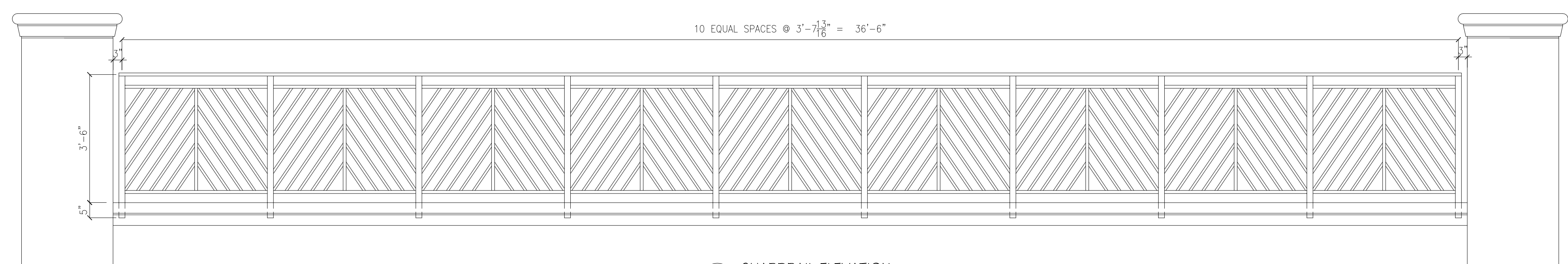
6 GUARDRAIL ELEVATION  
SCALE: 1/2" = 1'-0"



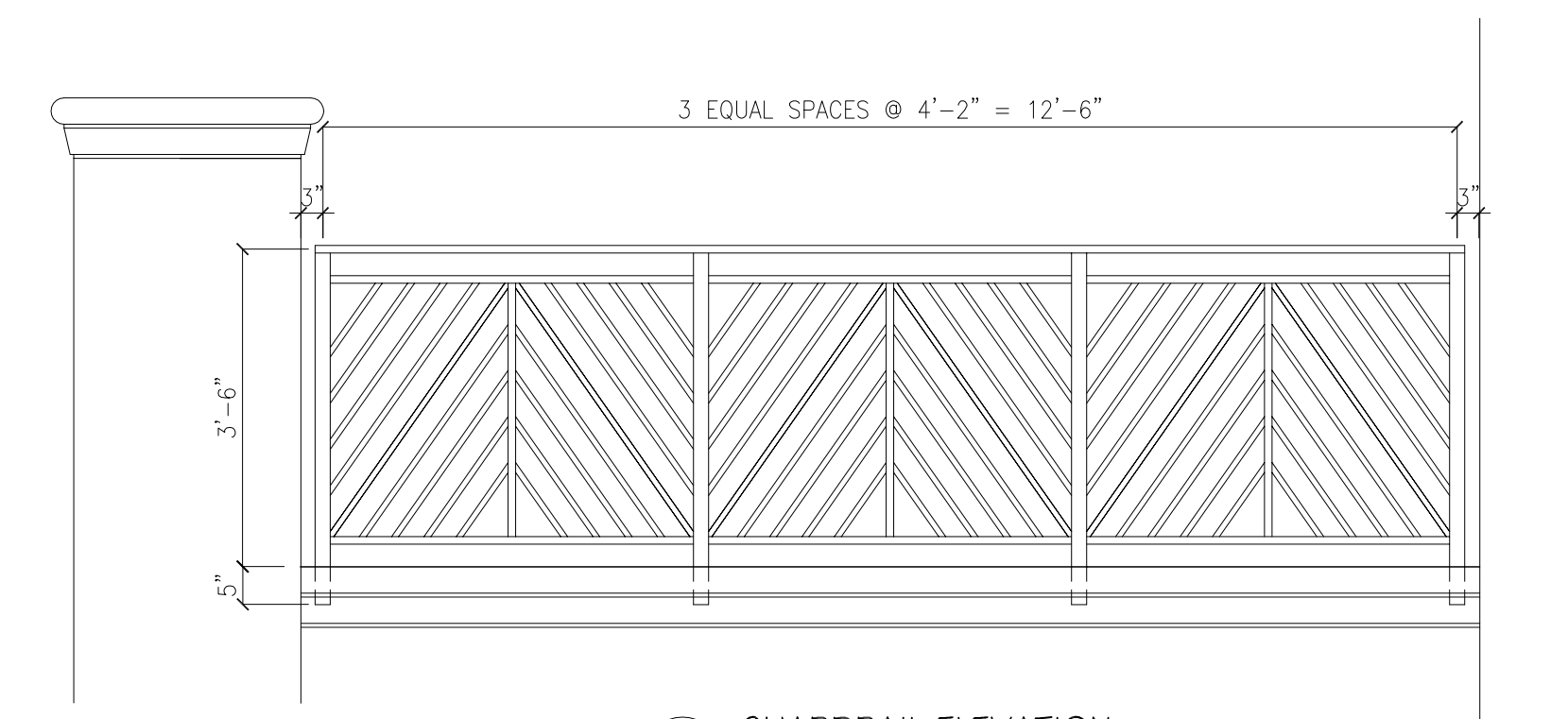
7 GUARDRAIL ELEVATION  
SCALE: 1/2" = 1'-0"



8 GUARDRAIL ELEVATION  
SCALE: 1/2" = 1'-0"



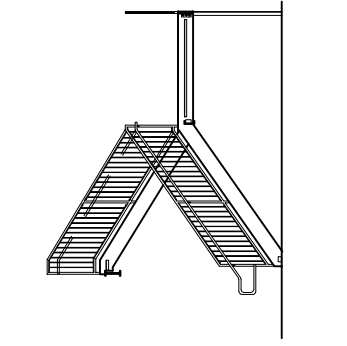
9 GUARDRAIL ELEVATION  
SCALE: 1/2" = 1'-0"



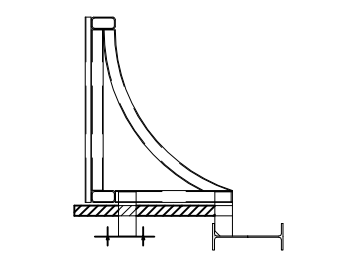
10 GUARDRAIL ELEVATION  
SCALE: 1/2" = 1'-0"

STANDARDS/SPECS.  
 CLEANING: STANDARD  
 FINISH: GALVANIZED  
 ELECTRODES: E70XX  
 SHOP BOLTS: 7/8" A325 (U.O.N.)  
 OPEN HOLES: 1/8" (U.O.N.)

APPROVER PLEASE NOTE:  
 THIS DRAWING REFLECTS OUR  
 UNDERSTANDING OF THE CONTRACT  
 DOCUMENTS THAT HAVE BEEN  
 DISCUSSED BY YOUR FIRM. PLEASE  
 REVIEW CAREFULLY, GIVING SPECIAL  
 ATTENTION TO THE DETAILS AND PLAN  
 VIEWS. IF STAR RISERS HAVE BEEN  
 MOVED FROM ONE RISE TO ANOTHER,  
 IT IS DONE TO CREATE A SMOOTH  
 RAILING TRANSITION AT PLATFORMS  
 AND FLOOR LANDINGS.  
 IF ITEMS ARE NOT MARKED FOR  
 CORRECTION, IT WILL BE ASSUMED  
 THAT IT IS APPROVED FOR  
 FABRICATION. THIS IS SUBJECT TO  
 COORDINATION BY THE G.C. OF ALL  
 TRADES WHOSE PRODUCTS OUR ITEMS  
 ATTACH TO OR FIELD VERIFICATION.



ANVIL CRAFT CORP  
 MISC. & ORNAMENTAL STEEL FABRICATORS  
 1005 ASPEN STREET  
 EASTON, PA 18042  
 610-250-9600  
 © 2011 ANVIL CRAFT CORP.



CUSTOMER:  
 TERMINAL CONSTRUCTION CORP.  
 215 STATE HWY. 17 SOUTH  
 WOOD RIDGE, NJ 07075  
 PH.: 201-939-9150  
 FAX.: 201-221-8463

PROJECT: PROJECT NO: 07091313  
 MONTCLAIR STATE UNIVERSITY  
 SCHOOL OF BUSINESS  
 GUARDRAILS @ SITE RETAINING WALLS  
 ELEVATIONS

REV.	DATE	BY
△		
△		
△		

DWN. BY: SS  
 DATE: 03-07-14