

**MONTCLAIR STATE**  

---

**UNIVERSITY**

---

**2020 RETENTION AND GRADUATION REPORT**

Office of Institutional Research

Spring 2020

**TABLE 1: RETENTION AND GRADUATION RATES FOR FULL-TIME, FIRST-TIME UNDERGRADUATE COHORTS  
ENTERING FALL 2009 TO FALL 2018 [1]**

YEAR COHORT ENTERED	NUMBER IN ENTERING COHORT [3]	RETENTION RATES			RETENTION & CUMULATIVE GRADUATION RATES [2]					
		PERCENT RETAINED TO SECOND YEAR	PERCENT RETAINED TO THIRD YEAR	PERCENT RETAINED TO FOURTH YEAR	PERCENT GRADUATED 4 YEARS	PERCENT RETAINED TO 5TH YEAR	PERCENT GRADUATED 5 YEARS	PERCENT RETAINED TO 6TH YEAR	PERCENT GRADUATED 6 YEARS	PERCENT RETAINED TO 7TH YEAR
2009	2,100	81.2%	73.3%	70.0%	36.0%	32.0%	60.0%	7.6%	65.6%	2.5%
2010	2,169	81.8%	73.9%	69.8%	39.2%	29.7%	60.9%	6.8%	65.2%	2.3%
2011	2,336	81.7%	72.5%	69.3%	42.3%	26.5%	62.0%	5.9%	65.3%	2.4%
2012	2,201	86.1%	77.8%	75.0%	47.1%	27.0%	67.8%	5.3%	71.4%	1.5%
2013	3,027	81.5%	73.0%	70.3%	44.6%	25.1%	62.6%	5.8%	67.0%	1.5%
2014	2,889	83.2%	76.3%	72.6%	44.9%	25.7%	64.7%	5.4%		
2015	3,097	83.1%	74.3%	70.4%	47.3%	22.7%				
2016	2,977	80.5%	72.0%	68.7%						
2017	3,004	79.5%	71.6%							
2018	3,168	80.1%								
<b>Means</b>	<b>2,697</b>	<b>81.9%</b>	<b>73.8%</b>	<b>70.7%</b>	<b>43.1%</b>	<b>27.0%</b>	<b>63.0%</b>	<b>6.1%</b>	<b>66.9%</b>	<b>2.1%</b>

[1] Sources: SURE/IPEDS Enrollment, Degree, and SSN Change file submissions. Retention rates exclude degree earners.

[2] Graduation rates correspond to those reported on the IPEDS Graduation Rate Survey (GRS).

[3] This is the Revised IPEDS GRS Cohort number, with exclusions (death, permanent disability, military service, foreign service, & church mission service) removed.

= Our most recent retention and graduation rates.

**TABLE 2: RETENTION AND GRADUATION RATES FOR FULL-TIME, FIRST-TIME FRESHMAN COHORTS  
BY ADMISSIONS STATUS, FALL 2013 TO FALL 2018 [1]**

YEAR & ADMIT TYPE	NUMBER IN ENTERING COHORT	RETENTION RATES			RETENTION & CUMULATIVE GRADUATION RATES					
		PERCENT RETAINED TO SECOND YEAR	PERCENT RETAINED TO THIRD YEAR	PERCENT RETAINED TO FOURTH YEAR	PERCENT GRADUATED 4 YEARS	PERCENT RETAINED TO 5TH YEAR	PERCENT GRADUATED 5 YEARS	PERCENT RETAINED TO 6TH YEAR	PERCENT GRADUATED 6 YEARS	PERCENT RETAINED TO 7TH YEAR
<b>2013</b>	<b>3,027</b>	<b>81.5%</b>	<b>73.0%</b>	<b>70.3%</b>	<b>44.6%</b>	<b>25.1%</b>	<b>62.6%</b>	<b>5.8%</b>	<b>67.0%</b>	<b>1.5%</b>
Regular	2,805	80.8%	72.4%	69.9%	45.0%	24.3%	62.4%	5.5%	66.5%	1.4%
EOF	126	90.5%	83.3%	81.7%	37.3%	38.9%	61.9%	13.5%	73.8%	4.0%
Special	96	88.5%	76.0%	67.7%	41.7%	32.3%	69.8%	4.2%	72.9%	0.0%
<b>2014</b>	<b>2,889</b>	<b>83.2%</b>	<b>76.3%</b>	<b>72.6%</b>	<b>44.9%</b>	<b>25.7%</b>	<b>64.7%</b>	<b>5.4%</b>		
Regular	2,654	83.1%	76.2%	73.0%	45.9%	25.2%	65.3%	5.4%		
EOF	119	89.1%	85.7%	77.3%	35.3%	37.8%	61.3%	5.9%		
Special	116	78.4%	69.0%	57.8%	33.6%	25.9%	53.4%	5.2%		
<b>2015</b>	<b>3,097</b>	<b>83.1%</b>	<b>74.3%</b>	<b>70.4%</b>	<b>47.3%</b>	<b>22.7%</b>				
Regular	2,849	82.8%	74.2%	70.5%	48.2%	21.9%				
EOF	122	91.8%	86.1%	82.0%	39.3%	39.3%				
Special	126	81.0%	65.1%	57.9%	34.9%	23.0%				
<b>2016</b>	<b>2,977</b>	<b>80.5%</b>	<b>72.0%</b>	<b>68.7%</b>						
Regular	2,777	80.2%	71.8%	68.6%						
EOF	129	85.3%	76.0%	74.4%						
Special	71	83.1%	69.0%	62.0%						
<b>2017</b>	<b>3,003</b>	<b>79.5%</b>	<b>71.7%</b>							
Regular	2,837	79.2%	71.2%							
EOF	123	87.0%	83.7%							
Special	44	72.7%	68.2%							
<b>2018</b>	<b>3,168</b>	<b>80.1%</b>								
Regular	2,982	79.9%								
EOF	117	86.3%								
Special	69	76.8%								

[1] Sources: SURE/IPEDS Enrollment, Degree, and SSN Change file submissions. Retention rates exclude degree earners.

**TABLE 3: RETENTION AND GRADUATION RATES FOR FULL-TIME, FIRST-TIME FRESHMAN COHORTS  
BY SEX, FALL 2013 TO FALL 2018 [1]**

YEAR ENTERED & SEX	NUMBER IN ENTERING COHORT	RETENTION RATES			RETENTION & CUMULATIVE GRADUATION RATES					
		PERCENT RETAINED TO SECOND YEAR	PERCENT RETAINED TO THIRD YEAR	PERCENT RETAINED TO FOURTH YEAR	PERCENT GRADUATED 4 YEARS	PERCENT RETAINED TO 5TH YEAR	PERCENT GRADUATED 5 YEARS	PERCENT RETAINED TO 6TH YEAR	PERCENT GRADUATED 6 YEARS	PERCENT RETAINED TO 7TH YEAR
<b>2013</b>	<b>3,027</b>	<b>81.5%</b>	<b>73.0%</b>	<b>70.3%</b>	<b>44.6%</b>	<b>25.1%</b>	<b>62.6%</b>	<b>5.8%</b>	<b>67.0%</b>	<b>1.1%</b>
Female	1,890	82.4%	74.9%	72.0%	49.5%	22.5%	66.7%	4.7%	70.5%	1.0%
Male	1,137	79.9%	69.8%	67.5%	36.4%	29.5%	55.8%	7.7%	61.3%	1.2%
<b>2014</b>	<b>2,889</b>	<b>83.2%</b>	<b>76.3%</b>	<b>72.6%</b>	<b>44.9%</b>	<b>25.7%</b>	<b>64.7%</b>	<b>5.4%</b>		
Female	1,814	85.3%	79.2%	75.6%	49.5%	24.9%	69.4%	5.1%		
Male	1,075	79.6%	71.4%	67.5%	37.2%	27.2%	56.7%	6.0%		
<b>2015</b>	<b>3,097</b>	<b>83.1%</b>	<b>74.3%</b>	<b>70.4%</b>	<b>47.3%</b>	<b>22.7%</b>				
Female	1,950	83.9%	75.2%	71.6%	51.5%	20.4%				
Male	1,147	81.7%	72.7%	68.4%	40.2%	26.6%				
<b>2016</b>	<b>2,977</b>	<b>80.5%</b>	<b>72.0%</b>	<b>68.7%</b>						
Female	1,869	80.8%	72.7%	69.7%						
Male	1,108	79.9%	70.8%	67.0%						
<b>2017</b>	<b>3,003</b>	<b>79.5%</b>	<b>71.7%</b>							
Female	1,943	80.1%	72.5%							
Male	1,061	78.3%	70.0%							
<b>2018</b>	<b>3,168</b>	<b>80.1%</b>								
Female	1,980	81.5%								
Male	1,188	77.9%								

[1] Sources: SURE/IPEDS Enrollment, Degree, and SSN Change file submissions. Retention rates exclude degree earners.

**TABLE 4: RETENTION AND GRADUATION RATES FOR FULL-TIME, FIRST-TIME FRESHMAN COHORTS  
BY RACE/ETHNICITY/U.S. RESIDENCY, FALL 2013 TO FALL 2018 [1]**

YEAR & RACE/ ETHNIC	NUMBER IN ENTERING COHORT	RETENTION RATES			RETENTION & CUMULATIVE GRADUATION RATES					
		PERCENT RETAINED TO SECOND YEAR	PERCENT RETAINED TO THIRD YEAR	PERCENT RETAINED TO FOURTH YEAR	PERCENT GRADUATED 4 YEARS	PERCENT RETAINED TO 5TH YEAR	PERCENT GRADUATED 5 YEARS	PERCENT RETAINED TO 6TH YEAR	PERCENT GRADUATED 6 YEARS	PERCENT RETAINED TO 7TH YEAR
<b>2013</b>	<b>3,027</b>	<b>81.5%</b>	<b>73.0%</b>	<b>70.3%</b>	<b>44.6%</b>	<b>25.1%</b>	<b>62.6%</b>	<b>10.4%</b>	<b>67.0%</b>	<b>1.5%</b>
Internat'l	43	76.7%	72.1%	67.4%	46.5%	23.3%	60.5%	9.3%	62.8%	2.3%
Hispanic	683	82.4%	74.4%	71.7%	38.4%	31.2%	59.7%	12.6%	65.4%	2.2%
Amlnd/NtAl	2	50.0%	50.0%	50.0%	0.0%	50.0%	0.0%	50.0%	50.0%	0.0%
Asian	173	80.3%	69.9%	66.5%	41.0%	25.4%	56.1%	10.4%	63.0%	1.2%
Black/AfAm	293	83.3%	73.4%	71.0%	39.6%	30.7%	61.1%	10.9%	67.2%	1.0%
NatHa/Pacl	4	100.0%	75.0%	75.0%	50.0%	25.0%	75.0%	25.0%	75.0%	0.0%
White	1,436	80.2%	72.4%	69.7%	49.2%	20.5%	65.2%	8.6%	68.0%	1.0%
Multiracial	114	82.5%	68.4%	66.7%	38.6%	28.1%	57.0%	15.8%	63.2%	2.6%
Unknown	279	84.6%	76.3%	73.5%	46.2%	26.9%	65.2%	11.1%	70.3%	2.2%
<b>2014</b>	<b>2,889</b>	<b>83.2%</b>	<b>76.3%</b>	<b>72.6%</b>	<b>44.9%</b>	<b>25.8%</b>	<b>64.7%</b>	<b>5.4%</b>		
Internat'l	40	72.5%	70.0%	67.5%	42.5%	22.5%	62.5%	5.0%		
Hispanic	716	83.7%	77.0%	72.1%	35.9%	31.3%	58.4%	8.2%		
Amlnd/NtAl	2	100.0%	50.0%	50.0%	50.0%	0.0%	50.0%	0.0%		
Asian	160	84.4%	78.1%	71.9%	44.4%	27.5%	61.9%	8.1%		
Black/AfAm	328	86.6%	79.6%	75.6%	40.9%	33.5%	65.5%	6.1%		
NatHa/Pacl	7	57.1%	57.1%	57.1%	42.9%	14.3%	57.1%	0.0%		
White	1,275	83.0%	76.4%	73.8%	51.7%	20.7%	69.5%	3.5%		
Multiracial	91	76.9%	65.9%	65.9%	40.7%	26.4%	54.9%	4.4%		
Unknown	270	82.2%	74.1%	68.5%	44.1%	25.2%	63.0%	5.2%		
<b>2015</b>	<b>3,097</b>	<b>83.1%</b>	<b>74.3%</b>	<b>70.7%</b>	<b>47.3%</b>	<b>22.7%</b>				
Internat'l	31	74.2%	64.5%	67.7%	41.9%	32.3%				
Hispanic	865	81.7%	73.1%	68.7%	40.2%	27.4%				
Amlnd/NtAl	1	100.0%	100.0%	100.0%	100.0%	0.0%				
Asian	179	85.5%	74.3%	72.1%	48.6%	21.8%				
Black/AfAm	391	83.9%	68.0%	63.9%	34.0%	28.1%				
NatHa/Pacl	8	87.5%	75.0%	75.0%	62.5%	12.5%				
White	1,258	83.5%	76.8%	73.7%	56.0%	17.6%				
Multiracial	82	90.2%	80.5%	79.3%	52.4%	20.7%				
Unknown	282	81.6%	74.8%	69.5%	46.5%	23.8%				

YEAR & RACE/ ETHNIC	NUMBER IN ENTERING COHORT	RETENTION RATES			RETENTION & CUMULATIVE GRADUATION RATES					
		PERCENT RETAINED TO SECOND YEAR	THIRD YEAR	FOURTH YEAR	PERCENT GRADUATED 4 YEARS	PERCENT RETAINED TO 5TH YEAR	PERCENT GRADUATED 5 YEARS	PERCENT RETAINED TO 6TH YEAR	PERCENT GRADUATED 6 YEARS	PERCENT RETAINED TO 7TH YEAR
<b>2016</b>	<b>2,977</b>	<b>80.5%</b>	<b>72.0%</b>	<b>68.7%</b>						
Internat'l	21	71.4%	57.1%	52.4%						
Hispanic	850	79.2%	69.3%	66.5%						
Amlnd/NtAl	2	100.0%	50.0%	50.0%						
Asian	186	86.0%	73.7%	67.2%						
Black/AfAm	426	79.3%	69.2%	65.3%						
NatHa/Pacl	8	62.5%	62.5%	50.0%						
White	1,248	80.8%	74.0%	71.1%						
Multiracial	75	82.7%	77.3%	74.7%						
Unknown	161	82.0%	75.8%	72.7%						
<b>2017</b>	<b>3,003</b>	<b>79.5%</b>	<b>71.7%</b>							
Internat'l	18	55.6%	50.0%							
Hispanic	879	79.0%	69.9%							
Amlnd/NtAl	4	75.0%	75.0%							
Asian	196	85.2%	75.5%							
Black/AfAm	502	76.1%	66.3%							
NatHa/Pacl	7	71.4%	71.4%							
White	1,185	80.9%	75.4%							
Multiracial	103	75.7%	65.0%							
Unknown	110	80.9%	71.8%							
<b>2018</b>	<b>3,168</b>	<b>80.1%</b>								
Internat'l	29	65.5%								
Hispanic	1,044	78.2%								
Amlnd/NtAl	5	100.0%								
Asian	208	77.4%								
Black/AfAm	483	82.4%								
NatHa/Pacl	6	66.7%								
White	1,185	82.1%								
Multiracial	86	76.7%								
Unknown	122	78.7%								

[1] Sources: SURE/IPEDS Enrollment, Degree, and SSN Change file submissions. Retention rates exclude degree earners.

**TABLE 5: RETENTION AND GRADUATION RATES FOR FULL-TIME, FIRST-TIME UNDERGRADUATES  
BY RACE/ETHNICITY AND SEX, FALL 2013 [1]**

YEAR & RACE/ ETHNIC	NUMBER IN ENTERING COHORT	RETENTION RATES			RETENTION & CUMULATIVE GRADUATION RATES					
		PERCENT RETAINED TO SECOND YEAR	THIRD YEAR	FOURTH YEAR	PERCENT GRADUATED 4 YEARS	PERCENT RETAINED TO 5TH YEAR	PERCENT GRADUATED 5 YEARS	PERCENT RETAINED TO 6TH YEAR	PERCENT GRADUATED 6 YEARS	PERCENT RETAINED TO 7TH YEAR
<b>2013</b>	<b>3,027</b>	<b>81.5%</b>	<b>73.0%</b>	<b>70.3%</b>	<b>44.6%</b>	<b>25.1%</b>	<b>62.6%</b>	<b>10.4%</b>	<b>67.0%</b>	<b>1.5%</b>
<i>Internat'l</i>	43	76.7%	72.1%	67.4%	46.5%	23.3%	60.5%	9.3%	62.8%	2.3%
Female	27	70.4%	70.4%	66.7%	51.9%	18.5%	66.7%	7.4%	66.7%	3.7%
Male	16	87.5%	75.0%	68.8%	37.5%	31.3%	50.0%	12.5%	56.3%	0.0%
<i>Hispanic</i>	683	82.4%	74.4%	71.7%	38.4%	31.2%	59.7%	12.6%	65.4%	2.2%
Female	445	83.6%	75.5%	73.3%	42.5%	28.1%	62.7%	13.5%	67.6%	2.2%
Male	238	80.3%	72.3%	68.9%	30.7%	37.0%	54.2%	10.9%	61.3%	2.1%
<i>AmInd/NtAl</i>	2	50.0%	50.0%	50.0%	0.0%	50.0%	0.0%	50.0%	50.0%	0.0%
Female	1									
Male	1	0.0%	0.0%	0.0%	0.0%	0.0%	0.0%	0.0%	0.0%	0.0%
<i>Asian</i>	173	80.3%	69.9%	66.5%	41.0%	25.4%	56.1%	10.4%	63.0%	1.2%
Female	93	83.9%	74.2%	69.9%	44.1%	26.9%	62.4%	7.5%	67.7%	2.2%
Male	80	76.3%	65.0%	62.5%	37.5%	23.8%	48.8%	13.8%	57.5%	0.0%
<i>Black/AfAm</i>	293	83.3%	73.4%	71.0%	39.6%	30.7%	61.1%	10.9%	67.2%	1.0%
Female	189	85.7%	77.8%	74.6%	47.1%	29.1%	68.8%	10.6%	73.5%	1.1%
Male	104	78.8%	65.4%	64.4%	26.0%	33.7%	47.1%	11.5%	55.8%	1.0%
<i>NatHa/Pacl</i>	4	100.0%	75.0%	75.0%	50.0%	25.0%	75.0%	25.0%	75.0%	0.0%
Female	2	100.0%	100.0%	100.0%	50.0%	50.0%	100.0%	50.0%	100.0%	0.0%
Male	2									
<i>White</i>	1,436	80.2%	72.4%	69.7%	49.2%	20.5%	65.2%	8.6%	68.0%	1.0%
Female	876	80.7%	74.2%	71.5%	54.5%	17.2%	68.6%	8.8%	71.5%	0.8%
Male	560	79.5%	69.6%	67.0%	40.9%	25.7%	59.8%	8.2%	62.7%	1.4%
<i>Multiracial</i>	114	82.5%	68.4%	66.7%	38.6%	28.1%	57.0%	15.8%	63.2%	2.6%
Female	76	82.9%	69.7%	67.1%	42.1%	26.3%	61.8%	13.2%	65.8%	3.9%
Male	38	81.6%	65.8%	65.8%	31.6%	31.6%	47.4%	21.1%	57.9%	0.0%
<i>Unknown</i>	279	84.6%	76.3%	73.5%	46.2%	26.9%	65.2%	11.1%	70.3%	2.2%
Female	181	84.5%	76.8%	72.4%	51.4%	23.8%	69.6%	9.9%	72.9%	0.6%
Male	98	84.7%	75.5%	75.5%	36.7%	32.7%	57.1%	13.3%	65.3%	5.1%

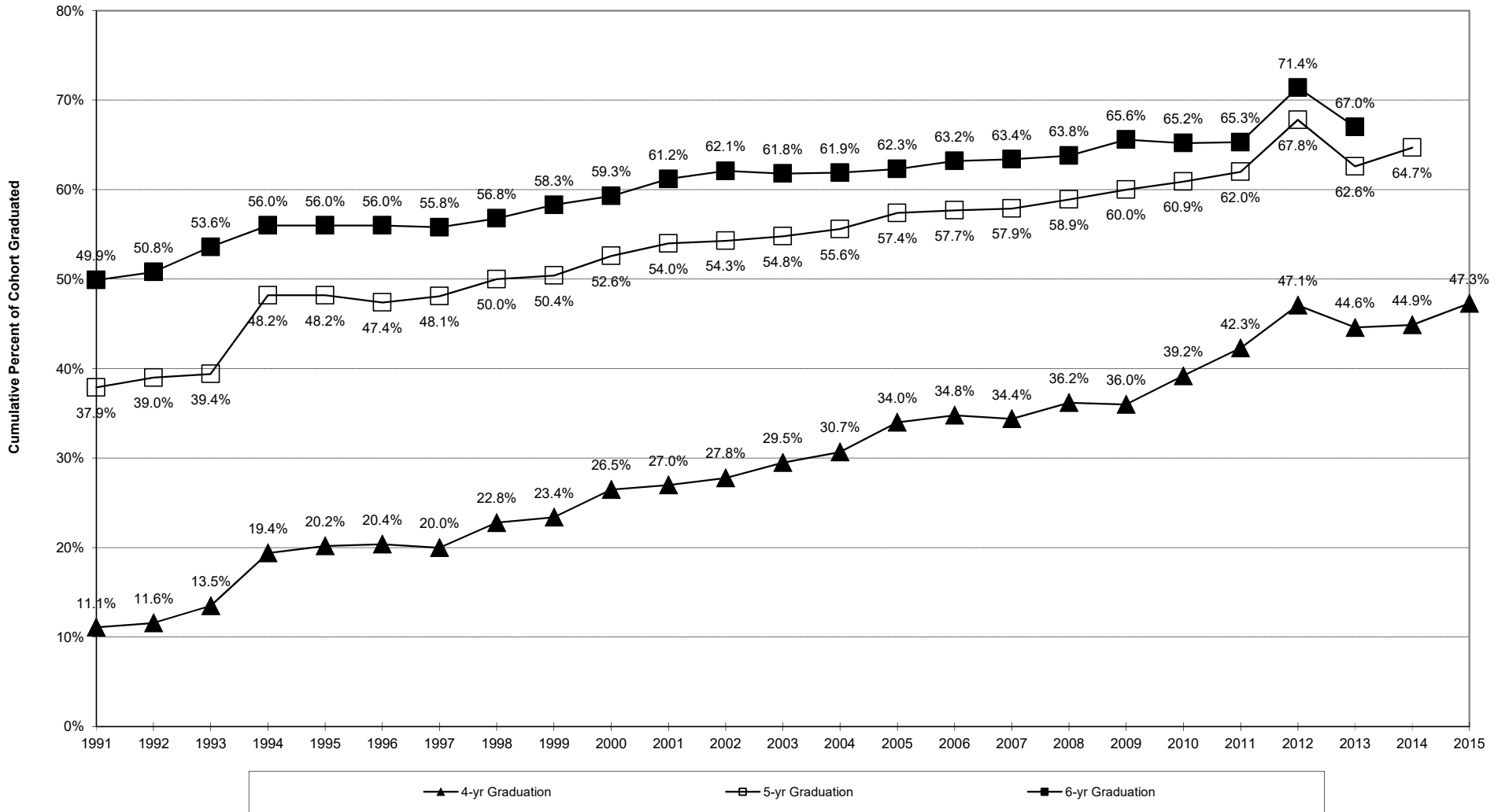
[1] Sources: SURE/IPEDS Enrollment, Degree, and SSN Change file submissions. Retention rates exclude degree earners.

**TABLE 6: LONG-TERM TRENDS IN GRADUATION RATES**

Cohort	4-yr Graduation	5-yr Graduation	6-yr Graduation	Completed in Fifth Year	Completed in Sixth Year
1991	11.1%	37.9%	49.9%	26.8%	12.0%
1992	11.6%	39.0%	50.8%	27.4%	11.8%
1993	13.5%	39.4%	53.6%	25.9%	14.2%
1994	19.4%	48.2%	56.0%	28.8%	7.8%
1995	20.2%	48.2%	56.0%	28.0%	7.8%
1996	20.4%	47.4%	56.0%	27.0%	8.6%
1997	20.0%	48.1%	55.8%	28.1%	7.7%
1998	22.8%	50.0%	56.8%	27.2%	6.8%
1999	23.4%	50.4%	58.3%	27.0%	7.9%
2000	26.5%	52.6%	59.3%	26.1%	6.7%
2001	27.0%	54.0%	61.2%	27.0%	7.2%
2002	27.8%	54.3%	62.1%	26.5%	7.8%
2003	29.5%	54.8%	61.8%	25.3%	7.0%
2004	30.7%	55.6%	61.9%	24.9%	6.3%
2005	34.0%	57.4%	62.3%	23.4%	4.9%
2006	34.8%	57.7%	63.2%	22.9%	5.5%
2007	34.4%	57.9%	63.4%	23.5%	5.5%
2008	36.2%	58.9%	63.8%	22.7%	4.9%
2009	36.0%	60.0%	65.6%	24.0%	5.6%
2010	39.2%	60.9%	65.2%	21.7%	4.3%
2011	42.3%	62.0%	65.3%	19.7%	3.3%
2012	47.1%	67.8%	71.4%	20.7%	3.6%
2013	44.6%	62.6%	67.0%	18.0%	4.4%
2014	44.9%	64.7%		19.8%	
2015	47.3%				
Average	29.8%	53.7%	60.3%	24.7%	7.0%



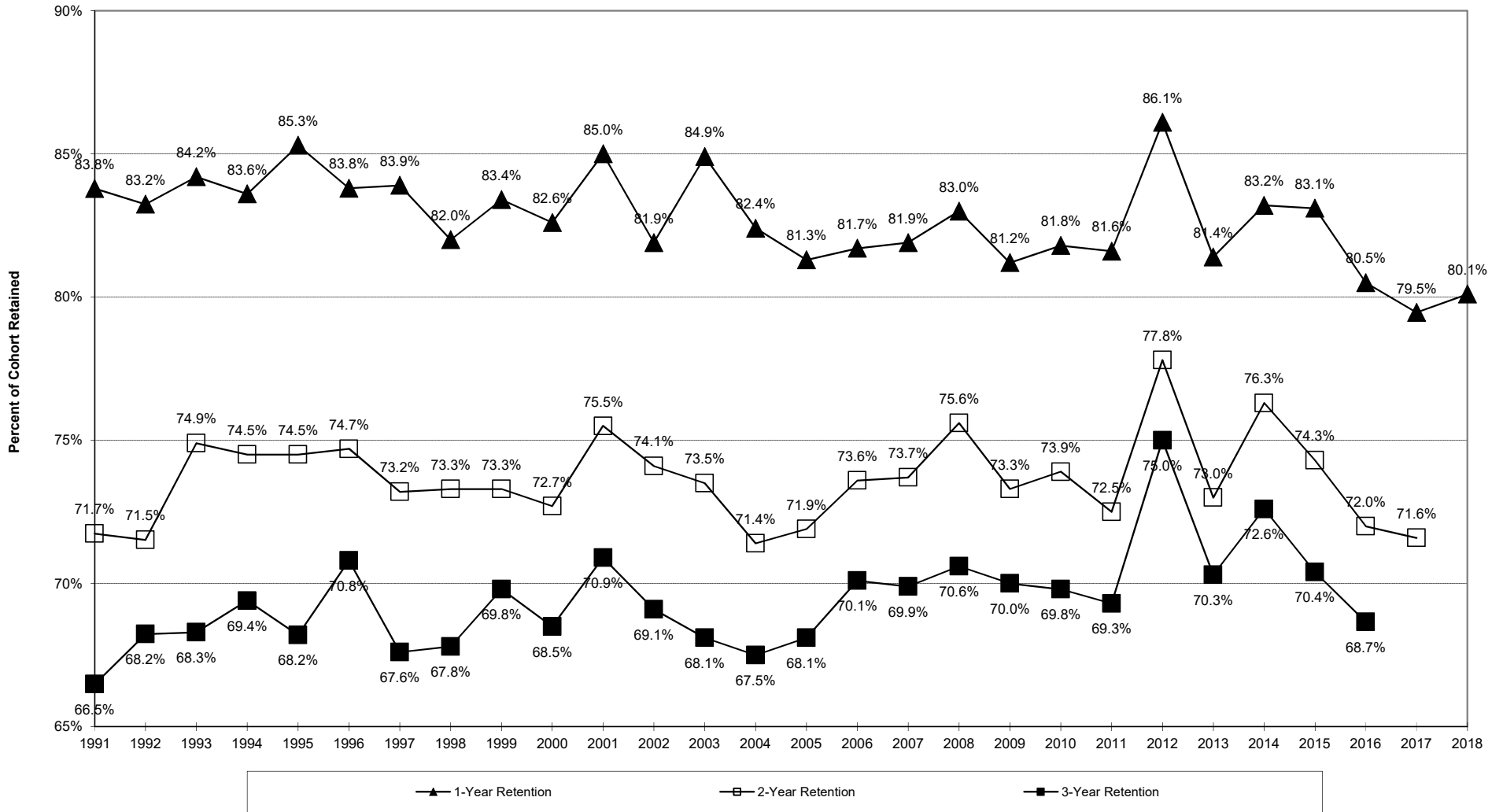
**CHART 1: GRADUATION RATES FOR COHORTS OF FULL-TIME, FIRST-TIME FRESHMEN**



**TABLE 7: LONG-TERM TRENDS IN RETENTION AND ATTRITION**

Cohort	First Semester Retention	1-Year Retention	2-Year Retention	3-Year Retention	First Semester Attrition	First Year Attrition	Second Year Attrition	Third Year Attrition
1991	<b>No Spring IPEDS Data</b>	83.8%	71.7%	66.5%	<b>No Spring IPEDS Data</b>	16.2%	12.0%	5.3%
1992		83.2%	71.5%	68.2%		16.8%	11.7%	3.3%
1993		84.2%	74.9%	68.3%		15.8%	9.3%	6.6%
1994		83.6%	74.5%	69.4%		16.4%	9.1%	5.1%
1995		85.3%	74.5%	68.2%		14.7%	10.8%	6.3%
1996	94.4%	83.8%	74.7%	70.8%	5.6%	16.2%	9.1%	3.9%
1997	95.1%	83.9%	73.2%	67.6%	4.9%	16.1%	10.7%	5.6%
1998	94.0%	82.0%	73.3%	67.8%	6.0%	18.0%	8.7%	5.5%
1999	95.1%	83.4%	73.3%	69.8%	4.9%	16.6%	10.1%	3.5%
2000	94.6%	82.6%	72.7%	68.5%	5.4%	17.4%	9.9%	4.2%
2001	94.6%	85.0%	75.5%	70.9%	5.4%	15.0%	9.5%	4.6%
2002	94.2%	81.9%	74.1%	69.1%	5.8%	18.1%	7.8%	5.0%
2003	93.5%	84.9%	73.5%	68.1%	6.5%	15.1%	11.4%	5.4%
2004	94.0%	82.4%	71.4%	67.5%	6.0%	17.6%	11.0%	3.9%
2005	94.7%	81.3%	71.9%	68.1%	5.3%	18.7%	9.4%	3.8%
2006	93.4%	81.7%	73.6%	70.1%	6.6%	18.3%	8.1%	3.5%
2007	94.0%	81.9%	73.7%	69.9%	6.0%	18.1%	8.2%	3.8%
2008	94.5%	83.0%	75.6%	70.6%	5.5%	17.0%	7.4%	5.0%
2009	94.4%	81.2%	73.3%	70.0%	5.6%	18.8%	7.9%	3.3%
2010	93.8%	81.8%	73.9%	69.8%	6.2%	18.2%	7.9%	4.1%
2011	93.6%	81.6%	72.5%	69.3%	6.4%	18.4%	9.1%	3.2%
2012	95.5%	86.1%	77.8%	75.0%	4.5%	13.9%	8.3%	2.8%
2013	95.4%	81.4%	73.0%	70.3%	4.6%	18.6%	8.4%	2.7%
2014	94.1%	83.2%	76.3%	72.6%	5.9%	16.8%	6.9%	3.7%
2015	92.3%	83.1%	74.3%	70.4%	7.7%	16.9%	8.8%	3.9%
2016	91.8%	80.5%	72.0%	68.7%	8.2%	19.5%	8.5%	3.3%
2017	91.4%	79.5%	71.6%		8.6%	20.5%	7.9%	
2018	90.2%	80.1%			9.8%	19.9%		
2019	91.6%				8.4%			
Average	93.8%	83.1%	73.8%	69.5%	6.2%	16.9%	9.3%	4.4%

**CHART 2: RETENTION RATES FOR COHORTS OF FULL-TIME, FIRST-TIME FRESHMEN**



**TABLE 8: 200% GRADUATION RATES**

Cohort	Four-year Graduation (100%)	Five-year Graduation (125%)	Six-year Graduation (150%)	Seven-year Graduation (175%)	Eight-year Graduation (200%)	Completed in Seventh Year	Completed in Eighth Year
1998	22.8%	50.0%	56.8%	59.5%	60.7%	2.7%	1.2%
1999	23.4%	50.4%	58.3%	61.5%	62.3%	3.2%	0.8%
2000	26.5%	52.6%	59.3%	61.0%	62.5%	1.7%	1.5%
2001	27.0%	54.0%	61.2%	63.8%	64.8%	2.6%	1.0%
2002	27.8%	54.3%	62.1%	63.9%	64.6%	1.8%	0.6%
2003	29.5%	54.8%	61.8%	63.4%	64.4%	1.6%	1.0%
2004	30.7%	55.6%	61.9%	63.8%	64.8%	1.9%	1.0%
2005	34.0%	57.4%	62.3%	63.8%	64.5%	1.5%	0.7%
2006	34.8%	57.7%	63.2%	64.7%	65.6%	1.5%	0.8%
2007	34.4%	57.9%	63.4%	65.6%	66.2%	2.2%	0.6%
2008	36.2%	58.9%	63.8%	65.5%	66.7%	1.7%	1.2%
2009	36.0%	60.0%	65.6%	66.9%	67.3%	1.3%	0.4%
2010	39.2%	60.9%	65.2%	66.6%	67.0%	1.4%	0.4%
2011	42.3%	62.0%	65.3%	66.8%	67.4%	1.5%	0.6%
Average	31.8%	56.2%	62.2%	64.1%	64.9%	1.9%	0.8%

**TABLE 9: RETENTION AND GRADUATION RATES FOR THE FULL-TIME, FIRST-TIME FRESHMAN COHORT ENTERING IN FALL 2013, BY SAT SCORES [1]**

YEAR & SAT RANGE	NUMBER IN ENTERING COHORT	RETENTION RATES			CUMULATIVE GRADUATION RATES		
		PERCENT RETAINED TO SECOND YEAR	PERCENT RETAINED TO THIRD YEAR	PERCENT RETAINED TO FOURTH YEAR	PERCENT GRADUATED ≤4 YEARS	PERCENT GRADUATED 5 YEARS	PERCENT GRADUATED 6 YEARS
<b>2013</b>	<b>3,027</b>	<b>81.5%</b>	<b>73.0%</b>	<b>70.3%</b>	<b>44.6%</b>	<b>62.6%</b>	<b>67.0%</b>
<i>Math</i>							
700-800	23	82.6%	73.9%	60.9%	60.9%	69.6%	73.9%
600-690	237	84.8%	77.2%	72.2%	50.2%	67.5%	72.2%
500-590	1,155	81.3%	72.1%	69.9%	45.3%	62.9%	67.0%
400-490	1,344	80.9%	72.9%	71.2%	42.9%	61.9%	66.6%
300-390	146	83.6%	73.3%	65.1%	43.2%	58.2%	63.0%
200-290	2	100.0%	50.0%	50.0%	50.0%	50.0%	50.0%
Missing	120	80.0%	74.2%	69.2%	44.2%	63.3%	65.8%
<i>Critical Reading</i>							
700-800	14	78.6%	78.6%	71.4%	42.9%	64.3%	71.4%
600-690	173	82.1%	72.8%	65.3%	49.1%	63.6%	65.9%
500-590	843	82.1%	73.8%	71.3%	47.6%	63.5%	67.7%
400-490	1,558	81.2%	72.3%	70.5%	44.2%	62.4%	67.2%
300-390	314	81.2%	73.6%	69.7%	36.6%	60.5%	65.0%
200-290	5	100.0%	100.0%	80.0%	40.0%	80.0%	80.0%
Missing	120	80.0%	74.2%	69.2%	44.2%	63.3%	65.8%
<i>Writing</i>							
700-800	4	50.0%	25.0%	25.0%	0.0%	25.0%	25.0%
600-690	269	80.3%	69.5%	65.8%	35.3%	56.1%	59.9%
500-590	1,461	82.1%	73.7%	71.7%	44.4%	62.9%	68.4%
400-490	953	80.9%	71.7%	69.5%	46.1%	62.7%	66.0%
300-390	198	82.8%	78.8%	72.2%	52.5%	67.7%	72.2%
200-290	18	88.9%	88.9%	72.2%	61.1%	88.9%	88.9%
Missing	124	79.0%	72.6%	67.7%	42.7%	62.1%	64.5%

[1] Sources: SURE/IPEDS Enrollment, Degree, and SSN Change file submissions. Retention rates exclude degree earners.

**TABLE 10: MEANS COMPARISONS: COMPLETERS VS. NON-COMPLETERS, FALL 2013 COHORT**

2013 Entering First-time Cohort Academic Measures	Means			Statistical Significance
	Completers	Non-Completers	Difference	
SAT-Mathematics	498	494	5	
SAT-Verbal	477	474	3	
SAT-Combined (2 tests)	975	968	7	
SAT-Written	485	477	8	
SAT-Combined (3 tests)	1489	1474	15	
High School GPA	3.22	3.09	0.13	***
High School Rank	68	61	7	***

\* T-tests: group means; 2-tailed, equal variance assumed,  $p \leq 0.05$

\*\* T-tests: group means; 2-tailed, equal variance assumed,  $p \leq 0.01$

\*\*\* T-tests: group means; 2-tailed, equal variance assumed,  $p \leq 0.001$

**TABLE 11: SIX-YEAR GRADUATION RATES FOR FULL-TIME, FIRST-TIME UNDERGRADUATE COHORTS  
FOR STUDENTS RECEIVING FEDERAL AND STATE TUITION GRANTS, FALL 2009 TO FALL 2013**

		CUMULATIVE SIX-YEAR GRADUATION RATE			
FEDERAL PELL GRANT AWARD STATUS	NUMBER IN ENTERING COHORT	NUMBER GRADUATED IN 6 YEARS	PERCENT GRADUATED 6 YEARS		Difference
<b>2009</b>	<b>2,100</b>	<b>1,377</b>	<b>65.6%</b>		
Received Federal PELL Grant	701	439	62.6%		
Did Not Receive Federal PELL Grant	1,399	938	67.0%		(4.42)
<b>2010</b>	<b>2,169</b>	<b>1,415</b>	<b>65.2%</b>		
Received Federal PELL Grant	803	505	62.9%		
Did Not Receive Federal PELL Grant	1,366	910	66.6%		(3.73)
<b>2011</b>	<b>2,336</b>	<b>1,526</b>	<b>65.3%</b>		
Received Federal PELL Grant	939	593	63.2%		
Did Not Receive Federal PELL Grant	1,397	933	66.8%		(3.63)
<b>2012</b>	<b>2,201</b>	<b>1,571</b>	<b>71.4%</b>		
Received Federal PELL Grant	891	615	69.0%		
Did Not Receive Federal PELL Grant	1,310	956	73.0%		(3.95)
<b>2013</b>	<b>3,027</b>	<b>2,029</b>	<b>67.0%</b>		
Received Federal PELL Grant	1,201	818	68.1%		
Did Not Receive Federal PELL Grant	1,826	1,211	66.3%		1.79
<hr/>					
		CUMULATIVE SIX-YEAR GRADUATION RATE			
STATE OF NEW JERSEY TUITION ASSISTANCE GRANT (TAG) AWARD STATUS	NUMBER IN ENTERING COHORT	NUMBER GRADUATED IN 6 YEARS	PERCENT GRADUATED 6 YEARS		Difference
<b>2009</b>	<b>2,100</b>	<b>1,377</b>	<b>65.6%</b>		
Received NJ TAG Grant	641	410	64.0%		
Did Not Receive NJ TAG Grant	1,459	967	66.3%		(2.32)
<b>2010</b>	<b>2,169</b>	<b>1,415</b>	<b>65.2%</b>		
Received NJ TAG Grant	668	428	64.1%		
Did Not Receive NJ TAG Grant	1,501	987	65.8%		(1.68)
<b>2011</b>	<b>2,336</b>	<b>1,526</b>	<b>65.3%</b>		
Received NJ TAG Grant	727	474	65.2%		
Did Not Receive NJ TAG Grant	1,609	1,052	65.4%		(0.18)
<b>2012</b>	<b>2,201</b>	<b>1,571</b>	<b>71.4%</b>		
Received NJ TAG Grant	712	502	70.5%		
Did Not Receive NJ TAG Grant	1,489	1,069	71.8%		(1.29)
<b>2013</b>	<b>3,027</b>	<b>2,029</b>	<b>67.0%</b>		
Received NJ TAG Grant	987	649	65.8%		
Did Not Receive NJ TAG Grant	2,040	1,380	67.6%		(1.89)

**TABLE 12: COHORT ADJUSTMENTS**  
**FIRST-TIME ENTERING UNDERGRADUATES, FALL 2008 TO FALL 2018**

<b>YEAR COHORT ENTERED</b>	<b>ORIGINAL NUMBER IN ENTERING COHORT [1]</b>	<b>NUMBER OF EXCLUSIONS [2]</b>	<b>REVISED/ADJUSTED NUMBER IN ENTERING COHORT [3]</b>
<b>2008</b>	2,257	0	2,257
<b>2009</b>	2,101	1	2,100
<b>2010</b>	2,171	2	2,169
<b>2011</b>	2,338	2	2,336
<b>2012</b>	2,202	1	2,201
<b>2013</b>	3,030	3	3,027
<b>2014</b>	2,889	0	2,889
<b>2015</b>	3,098	1	3,097
<b>2016</b>	2,977	0	2,977
<b>2017</b>	3,004	1	3,003
<b>2018</b>	3,030	3	3,027

[1] Source: SURE/IPEDS fall enrollment submission.

[2] IPEDS allows institutions to "exclude" from their first-time cohorts students who die, become permanently disabled, leave for military service, leave for foreign service, or leave on a church mission. Source: Banner.

[3] This is the Revised IPEDS cohort number, with exclusions (death, permanent disability, military service, foreign service, & church mission service) removed. This number is used to complete our IPEDS Graduation Rate Survey.



**TABLE 13: IPEDS OUTCOME MEASURES SURVEY OF FULL-TIME\_FIRST-TIME, PART-TIME\_FIRST-TIME, FULL-TIME\_TRANSFER, AND PART-TIME\_TRANSFER COHORTS ENTERING DURING THE FULL ACADEMIC YEAR 2011-12**

FULL ACADEMIC YEAR ENTERING COHORTS 2011-2012	NUMBER IN ENTERING COHORT	EXCLUSIONS	ADJUSTED COHORTS	FOUR-YEAR GRADUATION RATES		SIX-YEAR GRADUATION RATES		EIGHT-YEAR GRADUATION RATES		OUT-TRANSFER RATES	
				Number Awarded Degrees	Percent Awarded Degrees	Number Awarded Degrees	Percent Awarded Degrees	Number Awarded Degrees	Percent Awarded Degrees	Number Transferred To Other Institution	Percent Transferred To Other Institution
<b>Total AY Entrants</b>	<b>4,415</b>	<b>5</b>	<b>4,410</b>	<b>2,308</b>	<b>52.3%</b>	<b>2,996</b>	<b>67.9%</b>	<b>3,071</b>	<b>69.6%</b>	<b>907</b>	<b>20.6%</b>
Full-time, First-time	2,378	3	2,375	992	41.8%	1,541	64.9%	1,589	66.9%	582	24.5%
Part-time, First-time	25	0	25	1	4.0%	1	4.0%	2	8.0%	9	36.0%
Full-time, Transfer	1,718	2	1,716	1,196	69.7%	1,295	75.5%	1,311	76.4%	263	15.3%
Part-time, Transfer	294	0	294	119	40.5%	159	54.1%	169	57.5%	53	18.0%

Source: IPEDS Outcomes Measure Survey. Data from: (a) Student Unit Record Enrollment (SURE) State of New Jersey compliance files, and (b) National Student Clearinghouse.

**TABLE 14: GRADUATION RATE BENCHMARK DATA FOR NEW JERSEY PEERS AND CARNEGIE CLASSIFICATIONS  
FALL 2003 TO FALL 2012 FULL-TIME FIRST-TIME COHORTS**

**Graduation Rate 2009-2018 (Cohorts 2003-2012)**

	2003 Cohort			2004 Cohort			2005 Cohort			2006 Cohort			2007 Cohort			2008 Cohort		
	4 Year	5 Year	6 Year	4 Year	5 Year	6 Year	4 Year	5 Year	6 Year	4 Year	5 Year	6 Year	4 Year	5 Year	6 Year	4 Year	5 Year	6 Year
<b>Public Doctoral Universities (Very High Research Activity)</b>																		
Rutgers University-New Brunswick	52%	71%	77%	53%	70%	77%	53%	71%	77%	57%	76%	79%	57%	76%	79%	59%	77%	80%
New Jersey Institute of Technology*	17%	45%	55%	16%	44%	55%	17%	42%	54%	19%	45%	54%	23%	46%	58%	24%	50%	59%
National Average-(92 Institutions in IPEDS 2018)	45%	67%	71%	42%	63%	68%	43%	63%	68%	44%	64%	69%	45%	65%	69%	47%	66%	71%
<b>Public Doctoral Universities (High Research Activity)</b>																		
Montclair State University*	30%	55%	62%	31%	56%	62%	34%	57%	62%	35%	58%	63%	34%	58%	63%	36%	59%	64%
Rowan University*	47%	65%	67%	42%	63%	68%	43%	62%	66%	49%	69%	72%	46%	65%	70%	43%	64%	67%
Rutgers University-Camden*	30%	52%	62%	32%	54%	64%	30%	50%	61%	32%	58%	63%	27%	48%	55%	23%	46%	52%
Rutgers University-Newark	34%	56%	65%	30%	53%	63%	36%	61%	68%	32%	56%	61%	32%	60%	67%	37%	58%	66%
National Average-(90 Institutions in IPEDS 2018)	28%	48%	54%	27%	45%	52%	27%	46%	52%	27%	46%	52%	27%	46%	53%	28%	47%	54%
<b>Public Doctoral/Professional</b>																		
National Average-(28 Institutions in IPEDS 2018)	17%	34%	41%	17%	34%	41%	18%	35%	41%	18%	35%	42%	19%	36%	43%	21%	38%	44%
<b>Public Master's College&amp; Universities (Larger Programs)</b>																		
Kean University	19%	38%	45%	17%	39%	47%	21%	42%	49%	19%	43%	50%	19%	39%	46%	18%	41%	48%
New Jersey City University	8%	26%	38%	8%	25%	37%	6%	24%	39%	7%	25%	34%	5%	19%	32%	7%	23%	32%
Stockton University	39%	58%	66%	40%	60%	64%	43%	61%	66%	40%	60%	64%	42%	61%	65%	51%	63%	67%
The College of New Jersey	73%	84%	86%	71%	84%	86%	74%	85%	87%	72%	85%	87%	72%	82%	84%	73%	84%	87%
William Paterson University of New Jersey	21%	46%	52%	17%	42%	49%	18%	38%	46%	14%	40%	48%	16%	42%	50%	18%	43%	51%
National Average- (157 institutions in IPEDS 2018)	21%	40%	46%	22%	40%	46%	22%	39%	46%	23%	41%	47%	24%	41%	47%	24%	42%	48%
<b>Public Master's College&amp; Universities (Medium Programs)</b>																		
Ramapo College of New Jersey	NA	NA	NA	32%	54%	64%	30%	50%	61%	60%	71%	73%	59%	71%	73%	58%	71%	72%
National Average- (56 institutions in IPEDS 2018)	21%	35%	41%	20%	36%	41%	20%	35%	41%	19%	33%	39%	20%	35%	40%	20%	35%	41%
<b>Public Master's College&amp; Universities (Small Programs)</b>																		
National Average-(34 institutions in IPEDS 2018)	22%	35%	40%	20%	34%	38%	20%	34%	38%	21%	35%	40%	21%	35%	40%	22%	36%	41%

**TABLE 14: GRADUATION RATE BENCHMARK DATA FOR NEW JERSEY PEERS AND CARNEGIE CLASSIFICATIONS  
FALL 2003 TO FALL 2012 FULL-TIME FIRST-TIME COHORTS**

	2009 Cohort			2010 Cohort			2011 Cohort			2012 Cohort		
	4 Year	5 Year	6 Year	4 Year	5 Year	6 Year	4 Year	5 Year	6 Year	4 Year	5 Year	6 Year
<b>Public Doctoral Universities (Very High Research Activity)</b>												
Rutgers University-New Brunswick	58%	77%	80%	59%	77%	80%	60%	77%	80%	61%	77%	80%
New Jersey Institute of Technology*	24%	48%	61%	25%	52%	61%	28%	56%	64%	29%	57%	65%
National Average-(92 Institutions in IPEDS 2018)	48%	67%	71%	48%	67%	72%	50%	68%	72%	49%	67%	71%
<b>Public Doctoral Universities (High Research Activity)</b>												
Montclair State University*	36%	60%	66%	39%	61%	65%	42%	62%	65%	47%	68%	71%
Rowan University*	43%	61%	67%	48%	68%	71%	48%	65%	69%	49%	67%	72%
Rutgers University-Camden*	26%	50%	57%	27%	52%	59%	25%	51%	58%	31%	53%	58%
Rutgers University-Newark	33%	62%	68%	34%	60%	66%	37%	63%	68%	34%	59%	64%
National Average-(90 Institutions in IPEDS 2018)	28%	48%	54%	29%	49%	54%	31%	49%	55%	30%	48%	53%
<b>Public Doctoral/Professional</b>												
National Average-(28 Institutions in IPEDS 2018)	21%	38%	44%	21%	37%	44%	22%	38%	44%	24%	41%	46%
<b>Public Master's College&amp; Universities (Larger Programs)</b>												
Kean University	21%	42%	50%	21%	43%	50%	22%	42%	49%	23%	42%	49%
New Jersey City University	5%	21%	29%	7%	25%	31%	13%	25%	33%	11%	32%	39%
Stockton University	53%	69%	73%	50%	67%	70%	54%	70%	73%	57%	72%	74%
The College of New Jersey	72%	83%	85%	75%	85%	87%	73%	85%	87%	76%	84%	86%
William Paterson University of New Jersey	20%	42%	49%	29%	46%	51%	27%	50%	55%	29%	48%	52%
National Average- (157 institutions in IPEDS 2018)	25%	43%	48%	26%	43%	49%	26%	44%	49%	26%	44%	49%
<b>Public Master's College&amp; Universities (Medium Programs)</b>												
Ramapo College of New Jersey	60%	71%	74%	61%	71%	73%	60%	71%	74%	59%	71%	74%
National Average- (56 institutions in IPEDS 2018)	21%	36%	42%	21%	35%	41%	21%	37%	42%	27%	42%	46%
<b>Public Master's College&amp; Universities (Small Programs)</b>												
National Average-(34 institutions in IPEDS 2018)	23%	37%	41%	23%	37%	41%	24%	38%	42%	26%	40%	44%

\*NJIT moved to Doctoral U-Very High and Rowan, Montclair, and Rutgers-Camden moved to Doctoral U-High Research in Carnegie 2018

Data Source: IPEDS GRS 2004, 2005, 2006, 2007, 2008, 2009, 2010, 2011,2012,2013,2014,2015,2016,2017,2018