



IACUC General Meeting

February 15, 2012



Objectives

- What is the IACUC?
- IACUC Role
- IACUC review procedure
- Common protocol issues
- Occupational Health Program

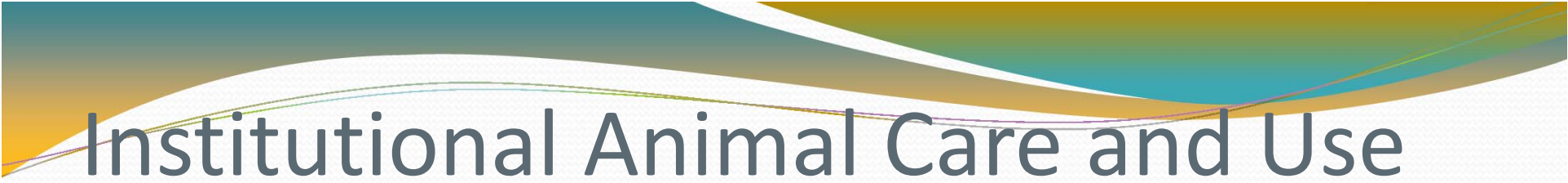


Why is compliance with animal research necessary?

- Compliance with federal laws and granting agency regulations
- Protection of animals in research
- Public need for transparency



IACUC?



Institutional Animal Care and Use Committee

- Committee monitors and oversees the care and use of animals in research, teaching, and testing
 - Chair
 - Veterinarian
 - Non-affiliated member (current member: wildlife expert)
 - Non-scientist (current member: safety expert)
 - Practicing scientists (3)
- 1 Administrator



IACUC Responsibilities

- Review, clarify, modify and approve animal research protocols before initiation
- Inspect animal facilities
- Provide training as needed



Agencies enforcing standards

- HHS- Office of Laboratory Animal Welfare (PHS)
- USDA
- State Statutes and local ordinances



What “animal(s)”?

- PHS – live vertebrate animal used or intended for use in research, research training, experimentation, or biological testing
- USDA – live or dead, dog, cat, nonhuman primate, guinea pig, hamster, rabbit, or any other warm-blooded animal which is being used or intended for use in research, teaching, experimentation, or exhibition purposes or as a pet. This **excludes** birds, lab rats, and lab mice



What activities require review?

- Lab research
- Observational studies that may affect animal behavior or health
- Field studies
- Classroom teaching studies involving students
- **Any** use of vertebrate animals by MSU-affiliated personnel



PI Responsibilities

- Before starting your application
 - Contact the IACUC Administrator
- Before initiating your protocol and before obtaining any animals
 - Obtain IACUC approval
 - Obtain Occupational Health Program clearances
- After IACUC approval
 - Make no changes before IACUC approval
 - Obtain renewal approval at end of Year 1 and Year 2
 - Ensure all personnel are trained and obtain health clearance
 - Maintain records and make lab available for inspection

Reporting Concerns

Institutional Animal Care and Use Committee

Contact IACUC/Report a Concern

IACUC Chair: Lisa Hazard, PhD

IACUC Administrator: Hila Berger, MPH

Phone number: 973-655-7781

Fax No.: 973-655-3022

Email: bergerh@mail.montclair.edu

Reporting a Concern

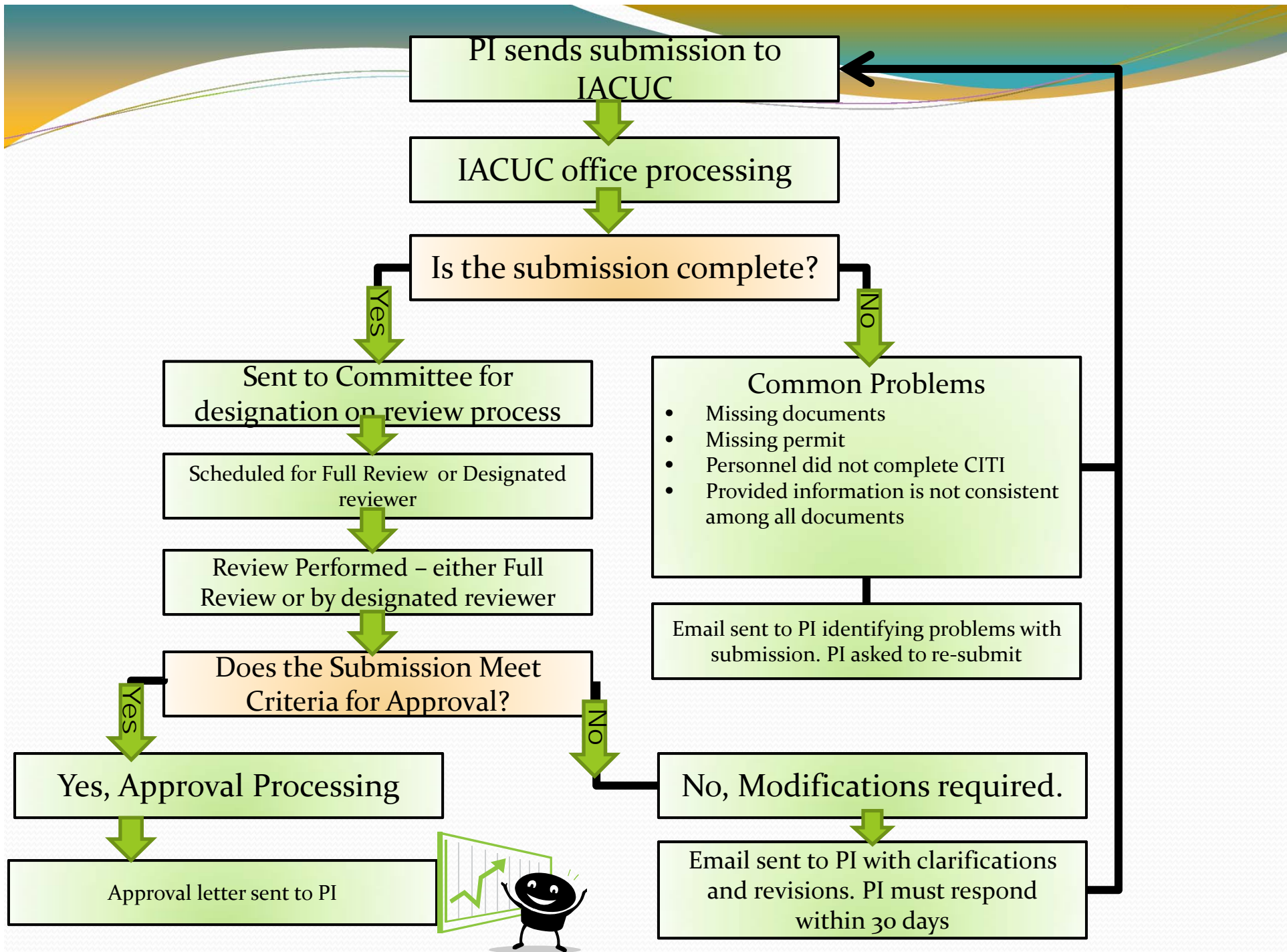
Reports of any animal care and use concerns can be submitted to the IACUC Office via the campus mail, electronic mail, fax, in person, or by telephone to the IACUC Office.

You may choose to use an **reporting form** to submit your concern. If you, as the person filing the form, wish to be informed of the actions taken in response to the report, please include your contact information on the form. Otherwise, you may remain anonymous. In all cases, your concern will be handled confidentially to the extent reasonably possible. The Animal Welfare Act provides that "No facility employee, Committee member, or laboratory personnel shall be discriminated against or be subject to any reprisal for reporting violations of any regulations or standards under the Act." (9 CFR § 2.32(c)(4)).

Upon submission of the report, the IACUC Office staff will review the report, make the appropriate



IACUC Procedure





IACUC application

- <http://www.montclair.edu/orsp/iacuc/forms/index.html>



Common concerns

- Method of euthanasia
- Final disposition of animals
- Regular animal care and record keeping
- Animal rationale
- Methods of monitoring animal for distress

The slide features a dark blue background with a decorative header at the top. The header consists of a teal-to-yellow gradient with several thin, curved lines in various colors (yellow, green, blue) that sweep across the top. The main text is centered in the upper half of the slide.

Occupational Health Program



What is the institutional policy?

- Policy is under final stages of review by HR
- Health Screening form will be available online
 - Required of all personnel (e.g. faculty, staff, student researchers) who will handle animals
- All screening forms will go directly to Donna Barry, Director of the University Health Center
- Forms are never reviewed by Committee or staff at IACUC
- UHC will report clearance status to IACUC prior to final approval of protocol



Contact Us

- <http://www.montclair.edu/ORSP/iacuc/>
- **IACUC Chair:** Lisa Hazard, PhD
 - hazardl@mail.montclair.edu
- **IACUC Administrator:** Hila Berger, MPH
 - **Phone number:** 973-655-7781
 - **Fax No.:** 973-655-3022
 - **Email:** bergerh@mail.montclair.edu



Thank you!