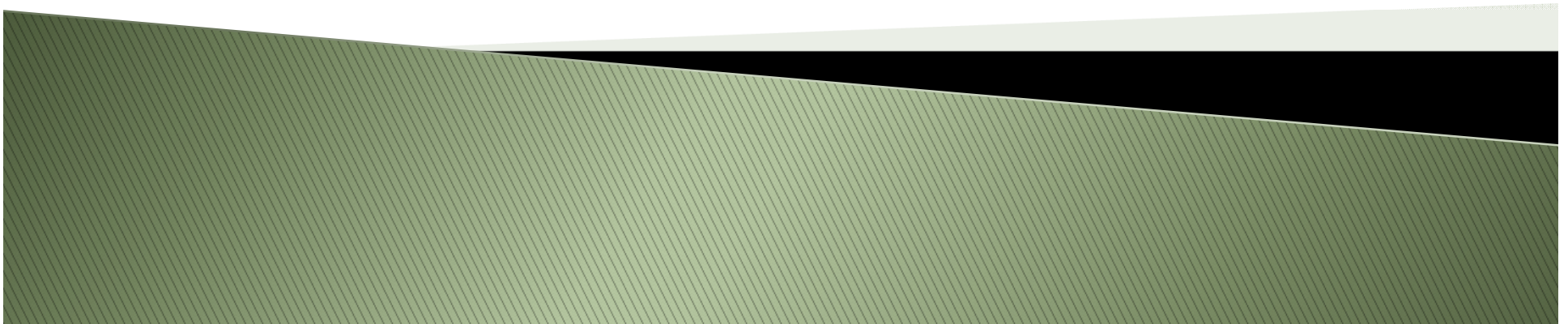


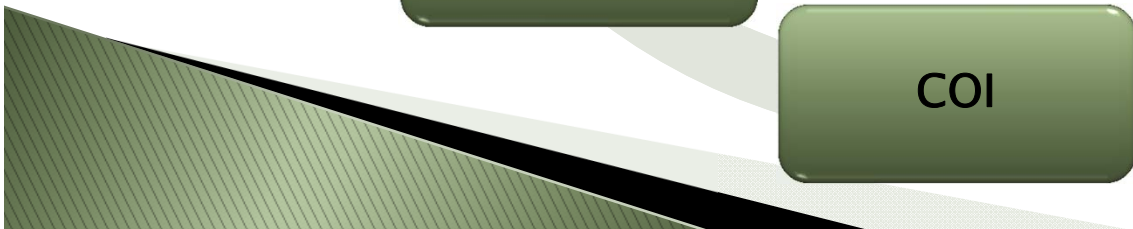
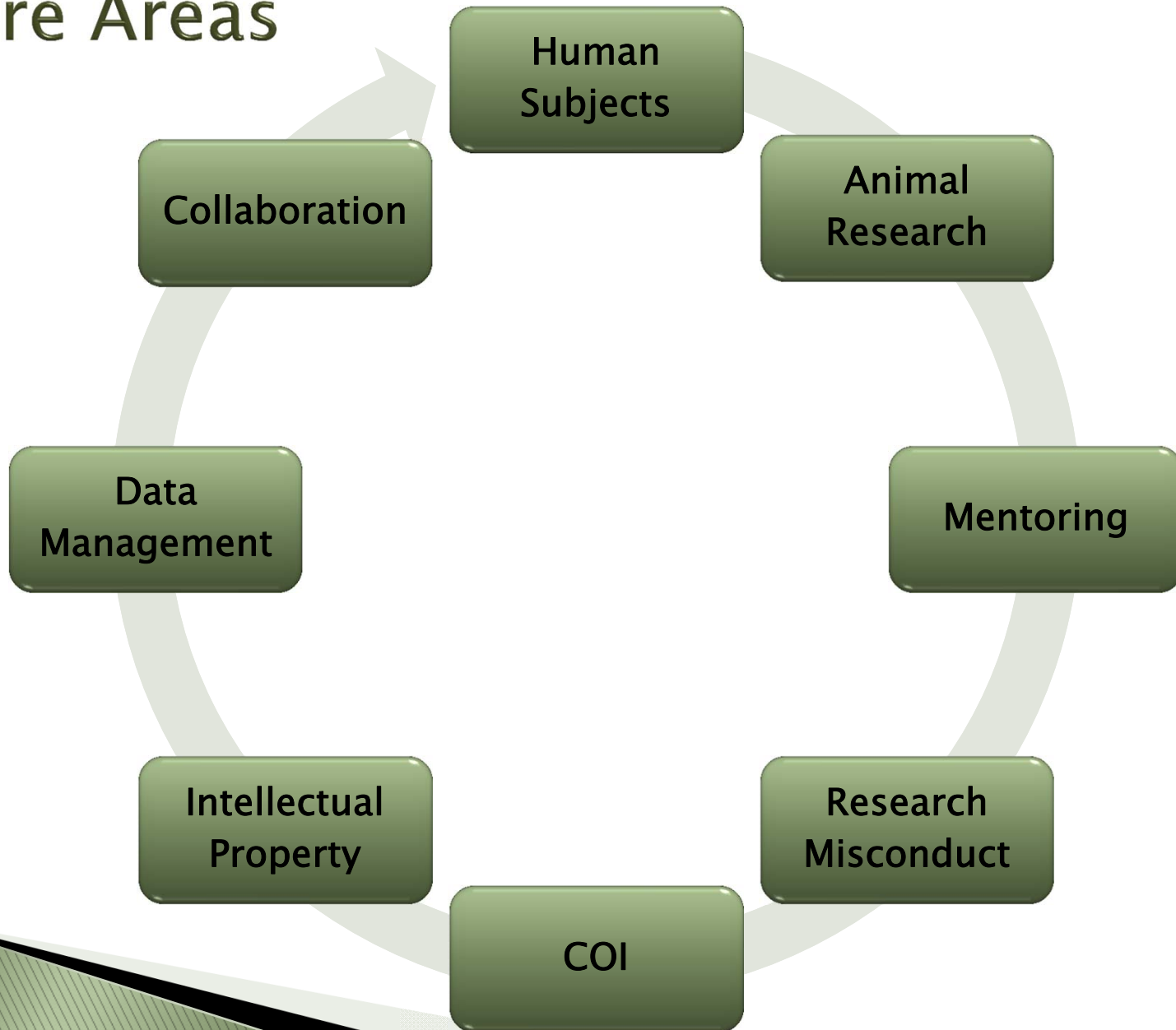
Responsible Conduct of Research and Compliance

Faculty Compliance

October 17, 2011

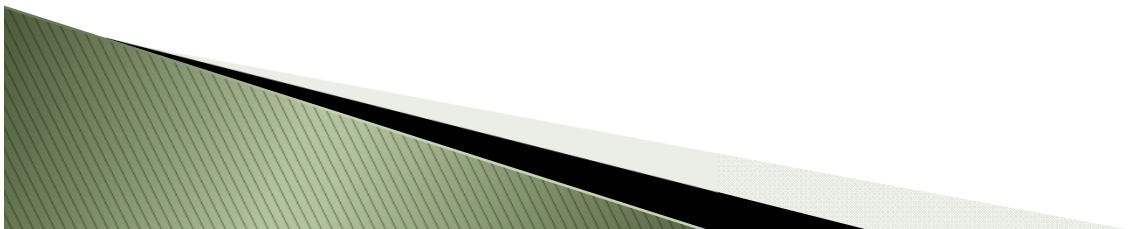


Core Areas



Why worry about RCR?


- ▶ Integrity in our respective fields
- ▶ Ethics
- ▶ Public protection
- ▶ University reputation
- ▶ RCR education is a requirement for NSF/NIH
- ▶ Responsibility as a mentor



MSU Policies

<http://www.montclair.edu/ORSP/compliance/>

- Compliance
- Getting Started with Grant Opportunities
- Pre-Award Procedures
- Post-Award Procedures
- Internal Awards
- Annual Reports & Award Recipients
- Workshops



The Montclair State University Research Compliance and Integrity staff is committed to training opportunities, policy development, and outreach. We are dedicated to maintaining the highest level of research integrity and serving the compliance needs of our research community.

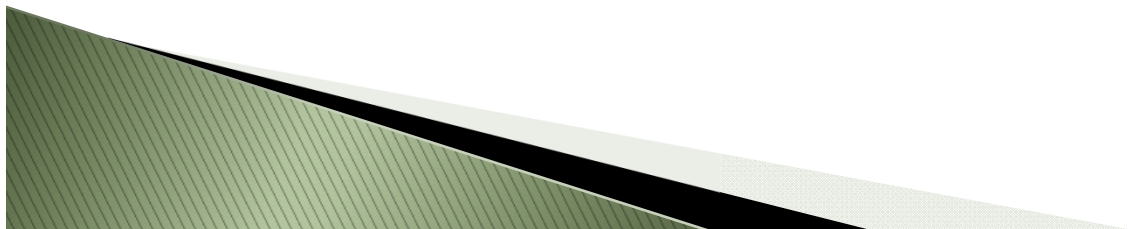
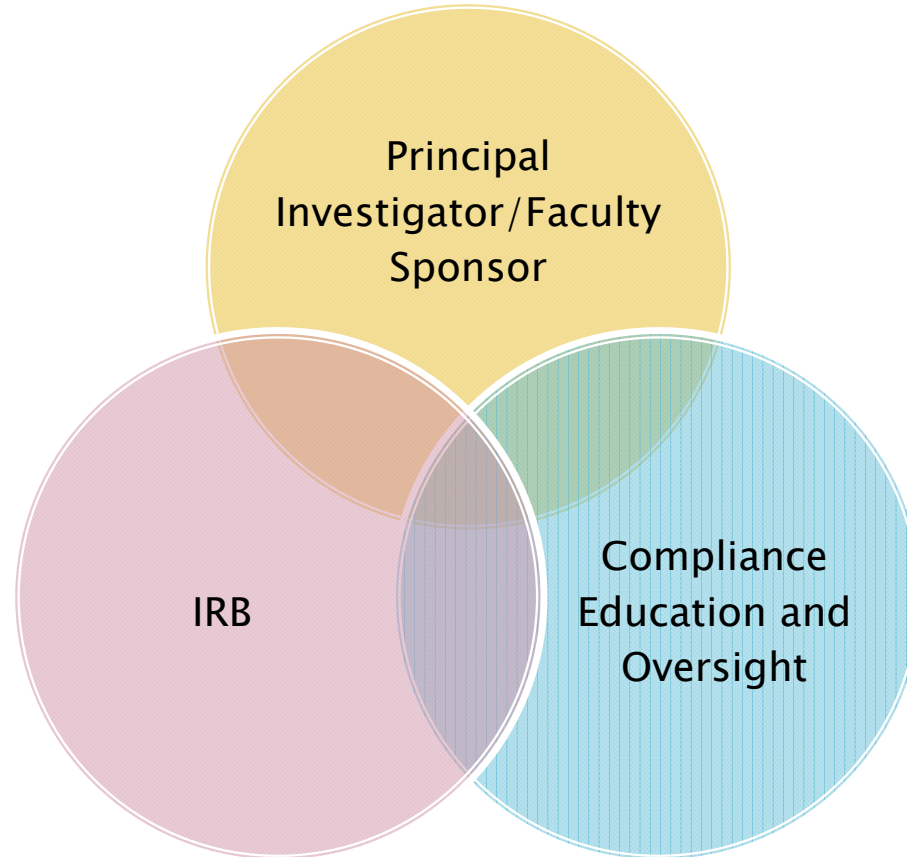
Policies and Guidelines	Regulatory Committees	Training
<p>Role of a Principal Investigator information outlines the responsibilities of a Principal Investigator and who is eligible to serve as a PI.</p>	<p>IRB is charged to review, approve initiation of, and conduct periodic reviews of research projects that involve human participants.</p> <p>IRB Chair: Debra Zellner</p>	<p>Required Responsible Conduct of Research Certification</p> <p>All faculty receiving NSF grants (and staff and students) must complete the attached responsible conduct of research training online module as soon as a grant is awarded to MSU.</p>
<p>Responsible Conduct of Research Training Policy establishes the minimum RCR training requirements for postdocs, and undergraduate and graduate students who are supported, i.e., stipend, tuition and fees, or travel support, by NSF.</p>	<p>Institutional Animal Care and Use Committee</p> <p>IACUC Chair: Lisa Hazard</p>	<p>Protecting Human Research Participants All faculty, staff or students conducting IRB approved research must complete this online training.</p>
<p>Scientific Misconduct gives guidelines and procedures regarding allegations of misconduct in research.</p>	<p>Institutional BioSafety Committee</p>	<p>Customized workshops in Responsible Conduct of Research (RCR). Faculty and staff are encouraged to inquire about this option available beginning Fall 2011.</p>
Copyright Statement		

Done

Human Subjects Research



Human Subjects Protection

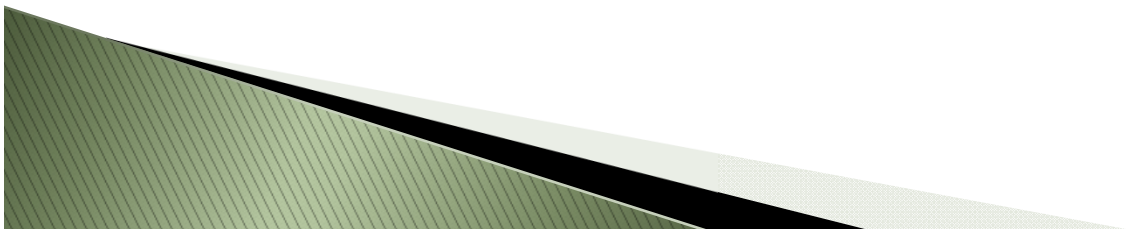


Animal Studies



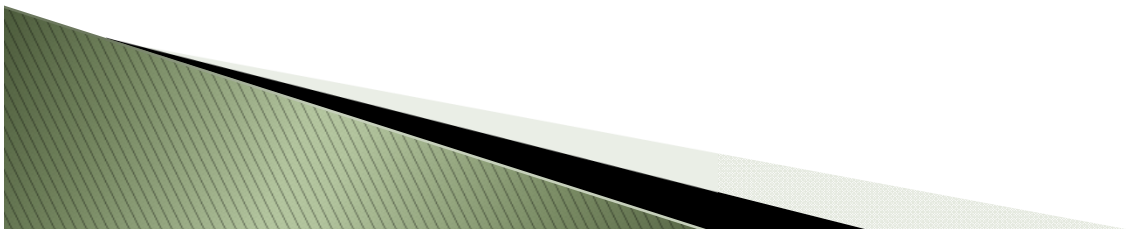
Animal Research

- ▶ Requires approval from the Institutional Animal Care and Use Committee (IACUC)
- ▶ Includes the use of live animals in research, testing, teaching, surveillance on campus or wildlife studies



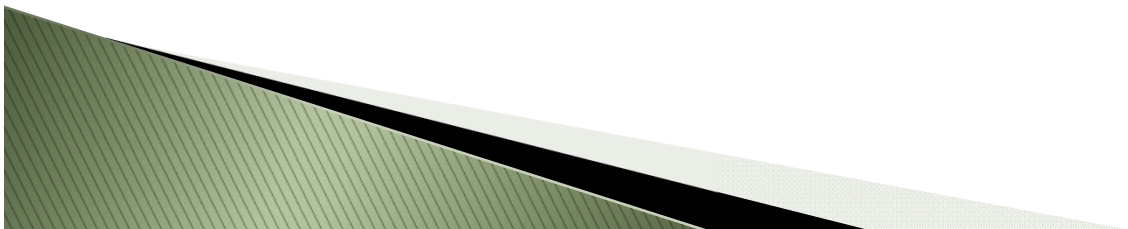
The IACUC

- ▶ IACUC committee includes chair, veterinarian, nonaffiliated, and faculty
- ▶ IACUC is the only authority that can authorize activity involving the care and use of animals
- ▶ Responsibility
 - Overseeing protocols, facilities, procedures
 - Perform semi-annual inspection
 - Enforce federal regulations, policies and guidelines



Animal Research

- ▶ The 3 R's
 - Replacement (or use another model)
 - Reduction (use fewer animals)
 - Refinement (less stress or pain for animal)



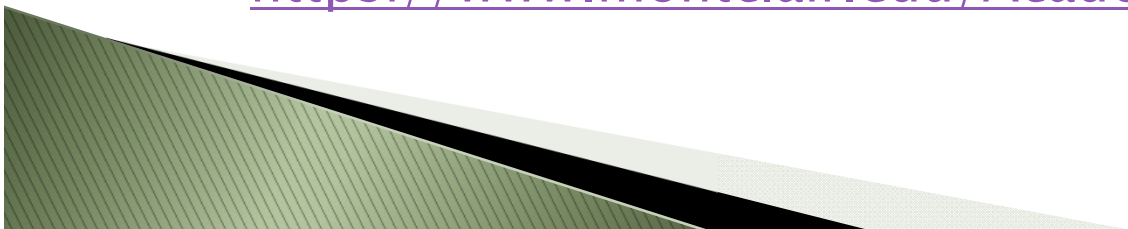
Mentoring



Mentoring

- ▶ Forms of Support:
 - Education
 - Fostering Creativity and Inspiration
 - Fostering research compliance
 - Thesis/Dissertation Guidance

 - Alleviating unethical pressures
 - Developing collaborative environments
- ▶ MSU resource
 - Center for Academic Advising offers training
 - <https://www.montclair.edu/AcademicAdvising/faculty/>

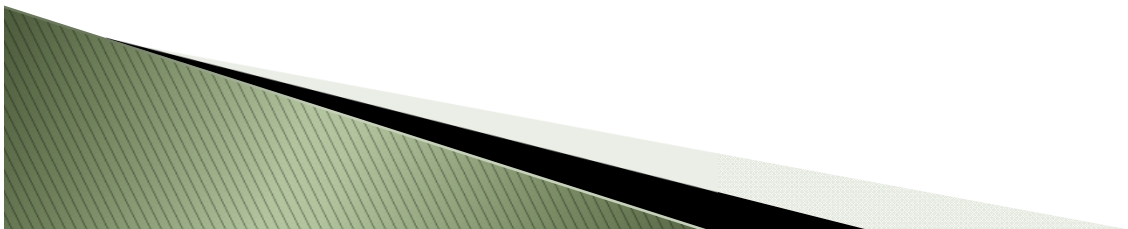


Research Misconduct



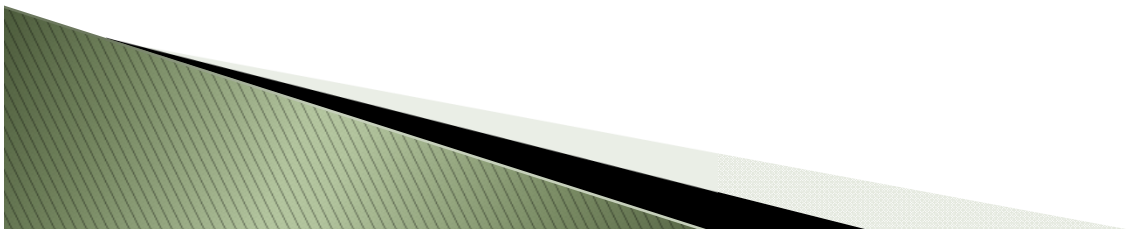
Responsible Conduct of Research

- ▶ Institutions are required to provide researchers with information and training to ensure research is conducted effectively
- ▶ Every Institutions that receives PHS (NIH, SAMHSA etc.) must have a policy and procedures for investigating research misconduct



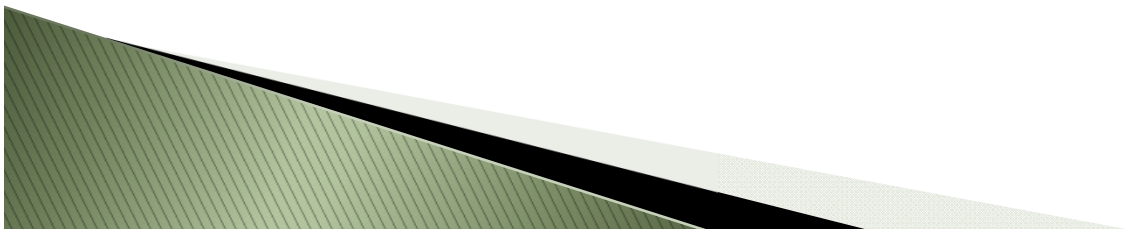
Process for Research Misconduct at MSU

- ▶ MSU Policy:
http://www.montclair.edu/ORSP/compliance/sci_misconduct.html
- ▶ Research Integrity Officer: Willard Gingerich, Provost
- ▶ Stage 1: Inquiry
- ▶ Stage 2: Investigation
- ▶ Stage 3: Formal Hearing
- ▶ Stage 4: Formal Finding and Disposition



What is Research Misconduct?

- ▶ (1) fabrication, falsification, plagiarism
- ▶ (2) failure to comply with Federal requirements for the protection of researchers, human subjects, the public and/or laboratory animals
- ▶ (3) the failure to meet other material legal requirements governing research.



Training Opportunities



MSU Training

<http://www.montclair.edu/ORSP/compliance/>

Compliance

Getting Started with Grant Opportunities


Pre-Award Procedures

Post-Award Procedures

Internal Awards

Annual Reports & Award Recipients

Workshops



The Montclair State University Research Compliance and Integrity staff is committed to training opportunities, policy development, and outreach. We are dedicated to maintaining the highest level of research integrity and serving the compliance needs of our research community.

Policies and Guidelines	Regulatory Committees	Training
<p>Role of a Principal Investigator information outlines the responsibilities of a Principal Investigator and who is eligible to serve as a PI.</p>	<p>IRB is charged to review, approve initiation of, and conduct periodic reviews of research projects that involve human participants.</p> <p>IRB Chair: Debra Zellner</p>	<p>Required Responsible Conduct of Research Certification</p> <p>All faculty receiving NSF grants (and staff and students) must complete the attached responsible conduct of research training online module as soon as a grant is awarded to MSU.</p>
<p>Responsible Conduct of Research Training Policy establishes the minimum RCR training requirements for postdocs, and undergraduate and graduate students who are supported, i.e., stipend, tuition and fees, or travel support, by NSF.</p>	<p>Institutional Animal Care and Use Committee</p> <p>IACUC Chair: Lisa Hazard</p>	<p>Protecting Human Research Participants All faculty, staff or students conducting IRB approved research must complete this online training.</p>
<p>Scientific Misconduct gives guidelines and procedures regarding allegations of misconduct in research.</p>	<p>Institutional BioSafety Committee</p>	<p>Customized workshops in Responsible Conduct of Research (RCR). Faculty and staff are encouraged to inquire about this option available beginning Fall 2011.</p>
<p>Copyright Statement</p>		

Done

RCR Training

- ▶ Online RCR

- <http://www.montclair.edu/ORSP/RCT/index.html>

- ▶ Online Human Subjects Protection

- <https://www.citiprogram.org/>

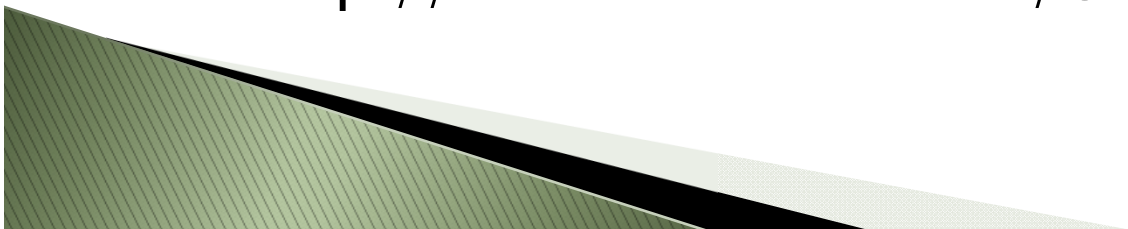
- ▶ Workshops and Seminars

- Online at:

<http://www.montclair.edu/ORSP/compliance/compliancetraining.html>

- Contact Hila Berger bergerh@mail.montclair.edu

- <http://www.montclair.edu/ORSP/compliance/>



Thank you

Hila Berger, MPH, CIP
Compliance Administrator

Ext 7781

bergerh@mail.montclair.edu

